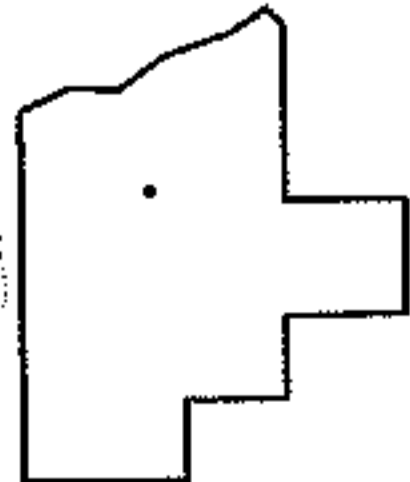
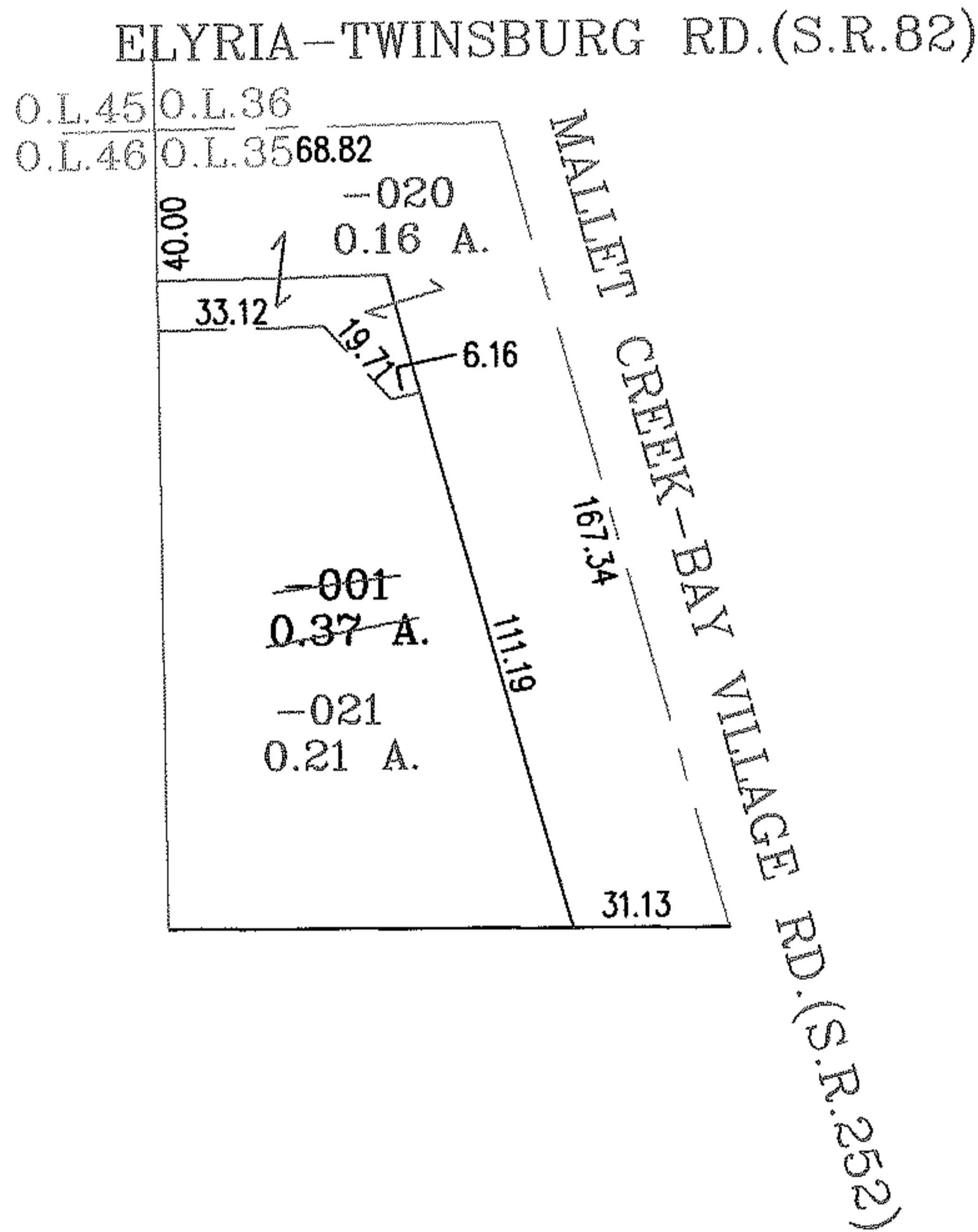
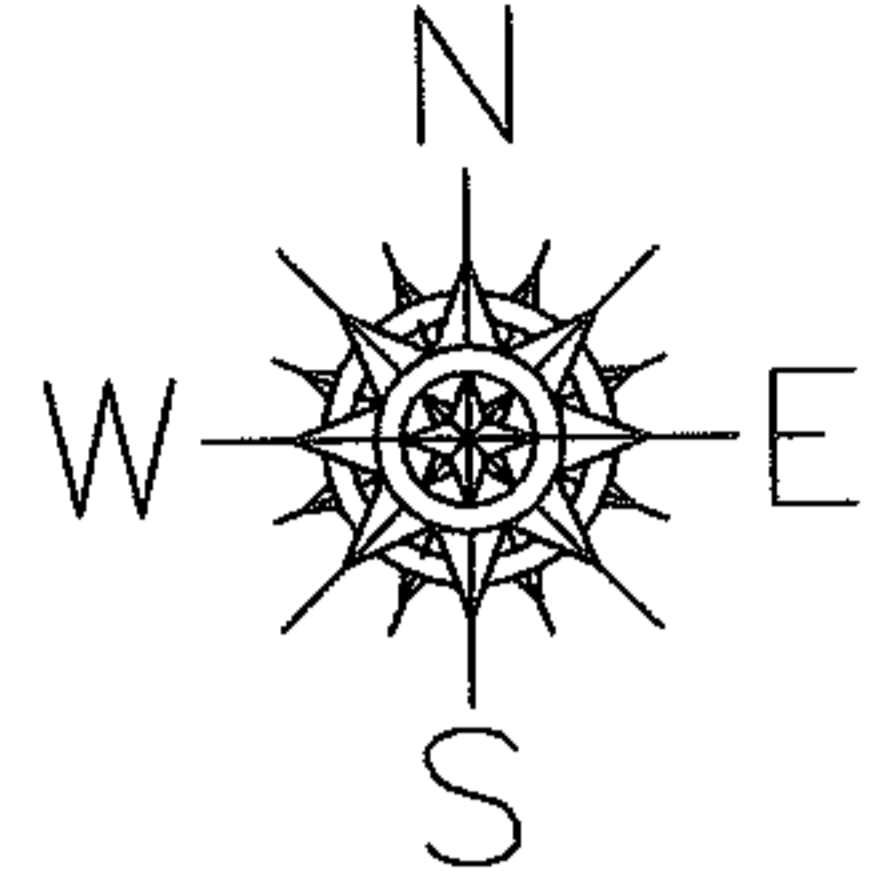


PARENT PARCEL: 12-00-035-101-001

CHILD PARCEL: 12-00-035-101-020, -021

STARTING POINT: INTERSECTION OF C/L OF S.R.82 AND NORTHWEST CORNER OF O.L.35

NO. 00145



SPLITS/DEEDS PROCESSED

LORAIN COUNTY TAX MAP DEPARTMENT
226 MIDDLE AVE. ELYRIA, OHIO

SURVEYED BY: MARK ALLEN YEAGER

CLOSURE: .01:10.000

MAP PAGE(S): 12-00-035-A

APPROVED BY: JH/RM DATE: 3-8-05

SCALE: 1"= 50 PRIOR INSTRUMENT: 982585627