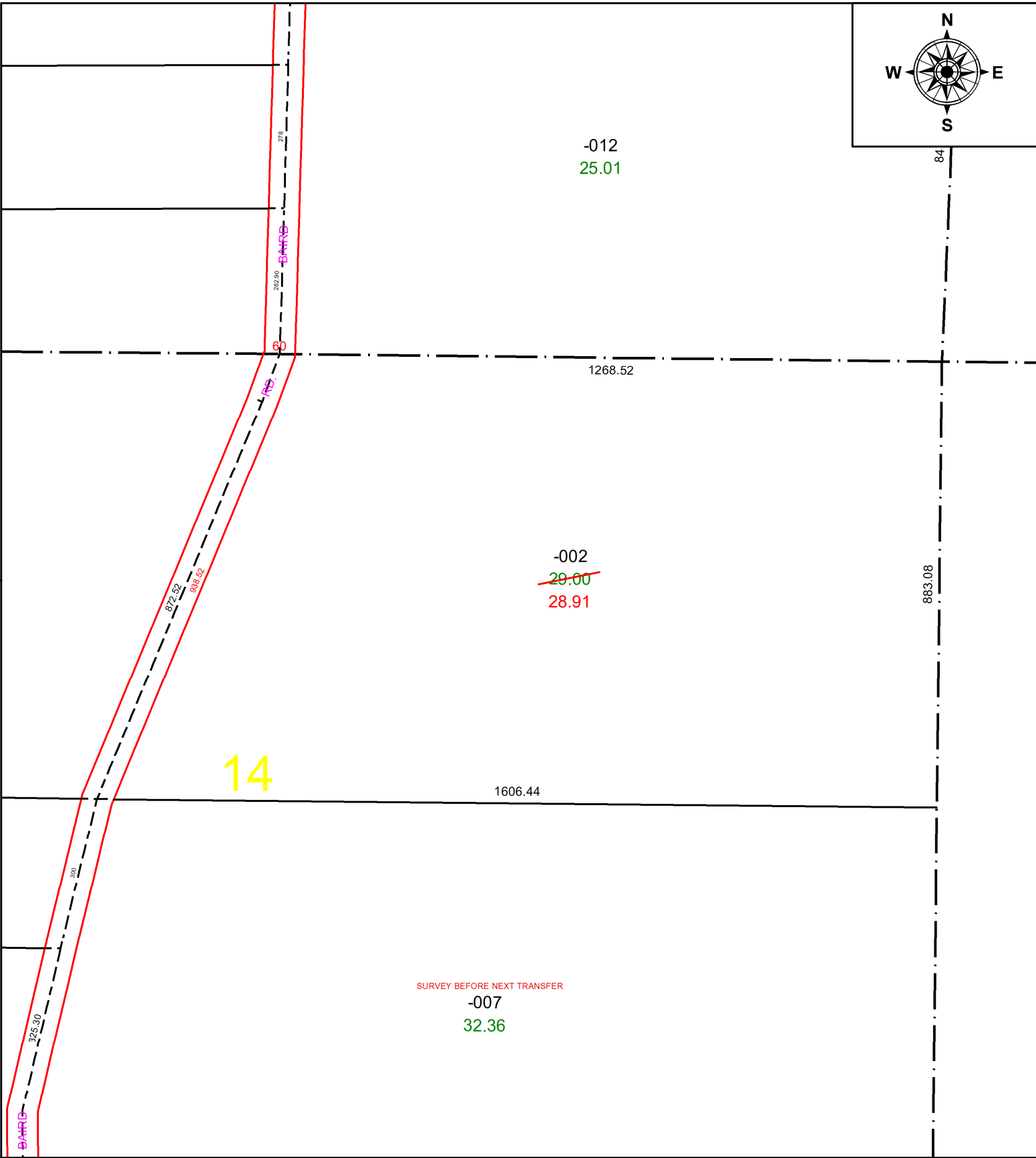
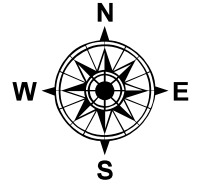


PARENT PARCEL: 13-10-014-000-002

CHILD PARCEL: **AC. CORR. PER PRIOR INSTR. # 1987-0261136**

STARTING POINT: N/A

22-04995-A



SPLITS/DEEDS PROCESSED
LORAIN COUNTY TAX MAP DEPARTMENT
226 MIDDLE AVE. ELYRIA, OH

SURVEYED BY: N/A SURVEY #: N/A
CLOSURE: N/A
MAP PAGE(S): 13-10-014
APPROVED BY: DMA DATE: 12/14/2022
SCALE: 1" = 250' PRIOR INSTRUMENT: 1987-0261136