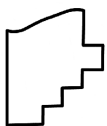
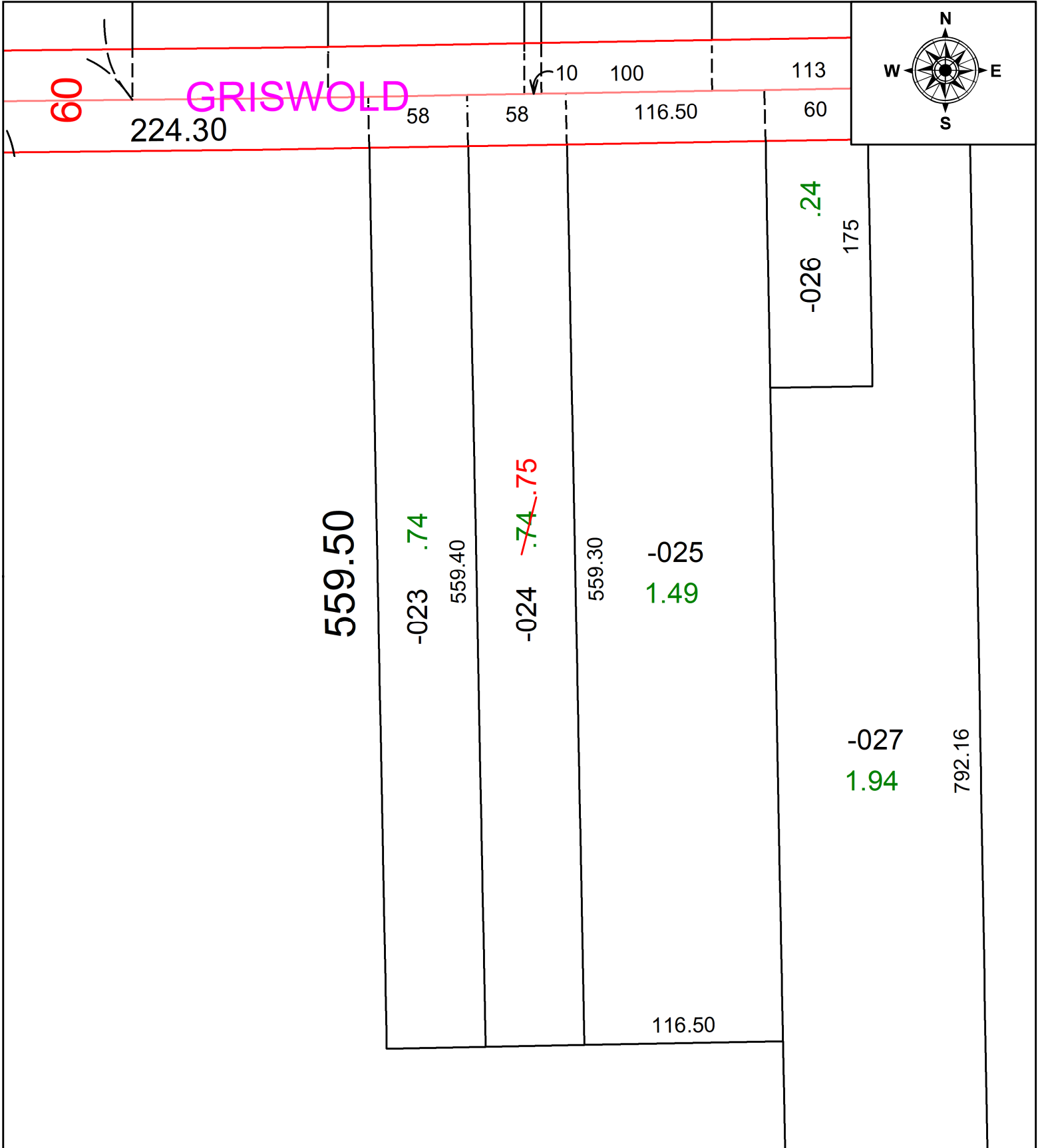


PARENT PARCEL: 06-24-039-000-024

CHILD PARCEL: **AC. CORR. PER INSTRUMENT # 2013-0487236**

STARTING POINT: N/A

22-04993-A



SPLITS/DEEDS PROCESSED
LORAIN COUNTY TAX MAP DEPARTMENT
226 MIDDLE AVE. ELYRIA, OH

SURVEYED BY: N/A	SURVEY #: N/A
CLOSURE: N/A	
MAP PAGE(S): 06-24-039	
APPROVED BY: DMA	DATE: 12/9/2022
SCALE: 1" = 75'	PRIOR INSTRUMENT: 2013-0487236