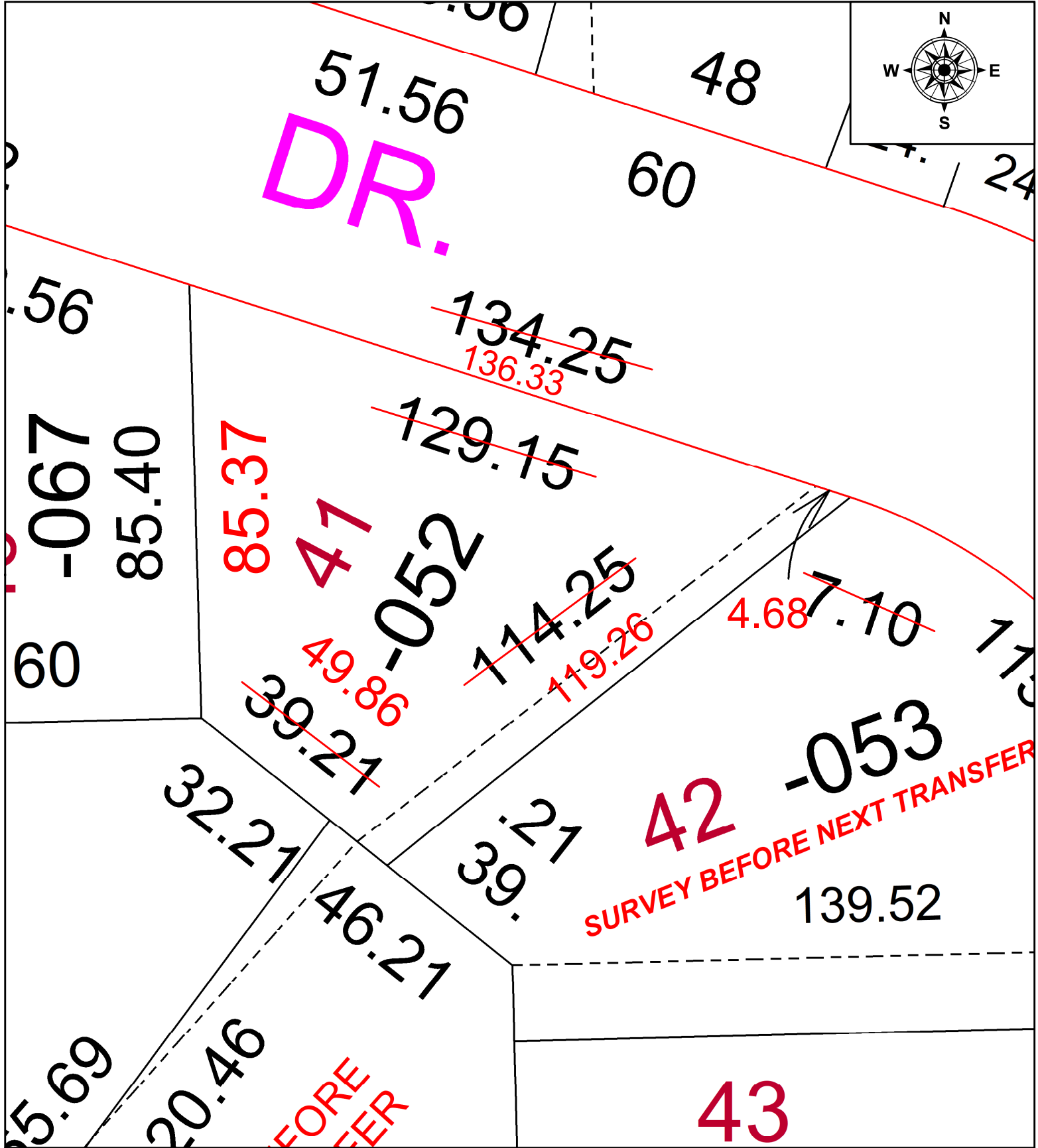


PARENT PARCEL: 06-25-029-103-052

CHILD PARCEL: **MAP CORRECTION PER SURVEY THOMAS SIMON**

22-04991-C

STARTING POINT: N.E. CORNER OF S/L 40 ROBINDALE PARK # 2 P.V. 23 PG. 39



SPLITS/DEEDS PROCESSED
 LORAIN COUNTY TAX MAP DEPARTMENT
 226 MIDDLE AVE. ELYRIA, OH

SURVEYED BY: THOMAS SIMON SURVEY #: 50750
 CLOSURE: 1: 47185
 MAP PAGE(S): 06-25-029
 APPROVED BY: DMA DATE: 12/7/2022
 SCALE: 1" = 25' PRIOR INSTRUMENT: 2022-0882263