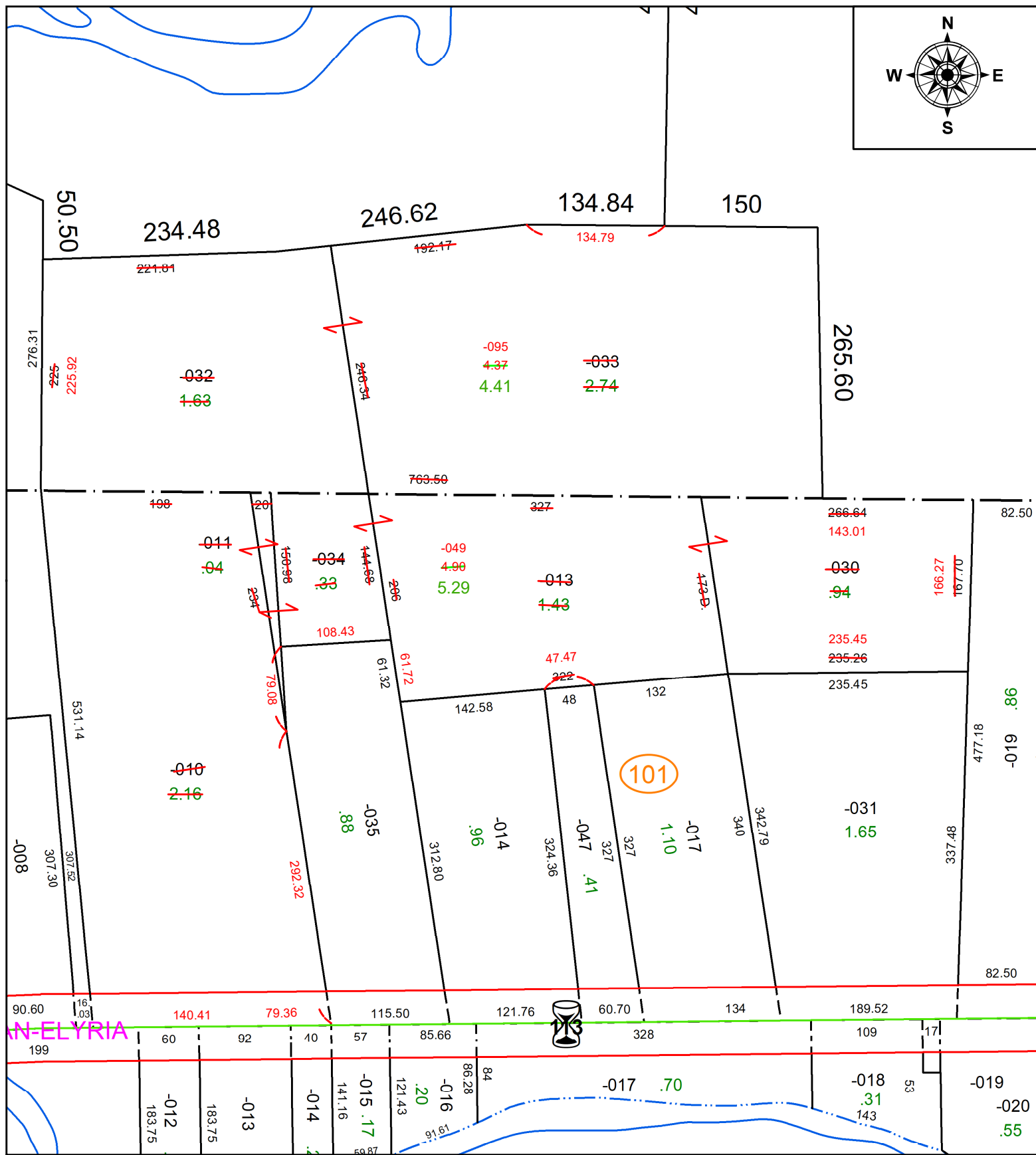
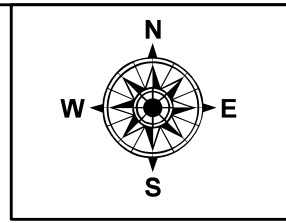


PARENT PARCEL: 05-00-009-000-032, -033 & 05-00-010-101-010, -013, -030, -034

CHILD PARCEL: 12-00-009-000-095 & 12-00-010-101-049

STARTING POINT: AC CORR PER SURV BY STEVEN J. LEESMAN

22-04990-A



SPLITS/DEEDS PROCESSED
LORAIN COUNTY TAX MAP DEPARTMENT
226 MIDDLE AVE. ELYRIA, OH

SURVEYED BY: STEVEN J. LEESMAN SURV # 50752
CLOSURE: 1: 289376
MAP PAGE(S): 05-00-009, -010
APPROVED BY: AC DATE: December 09, 2022
SCALE: 1 in = 125 ft PRIOR INSTRUMENT: 2015- 0563694