

PARENT PARCEL:

06-26-060-000-001 & -018

CHILD PARCEL:

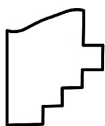
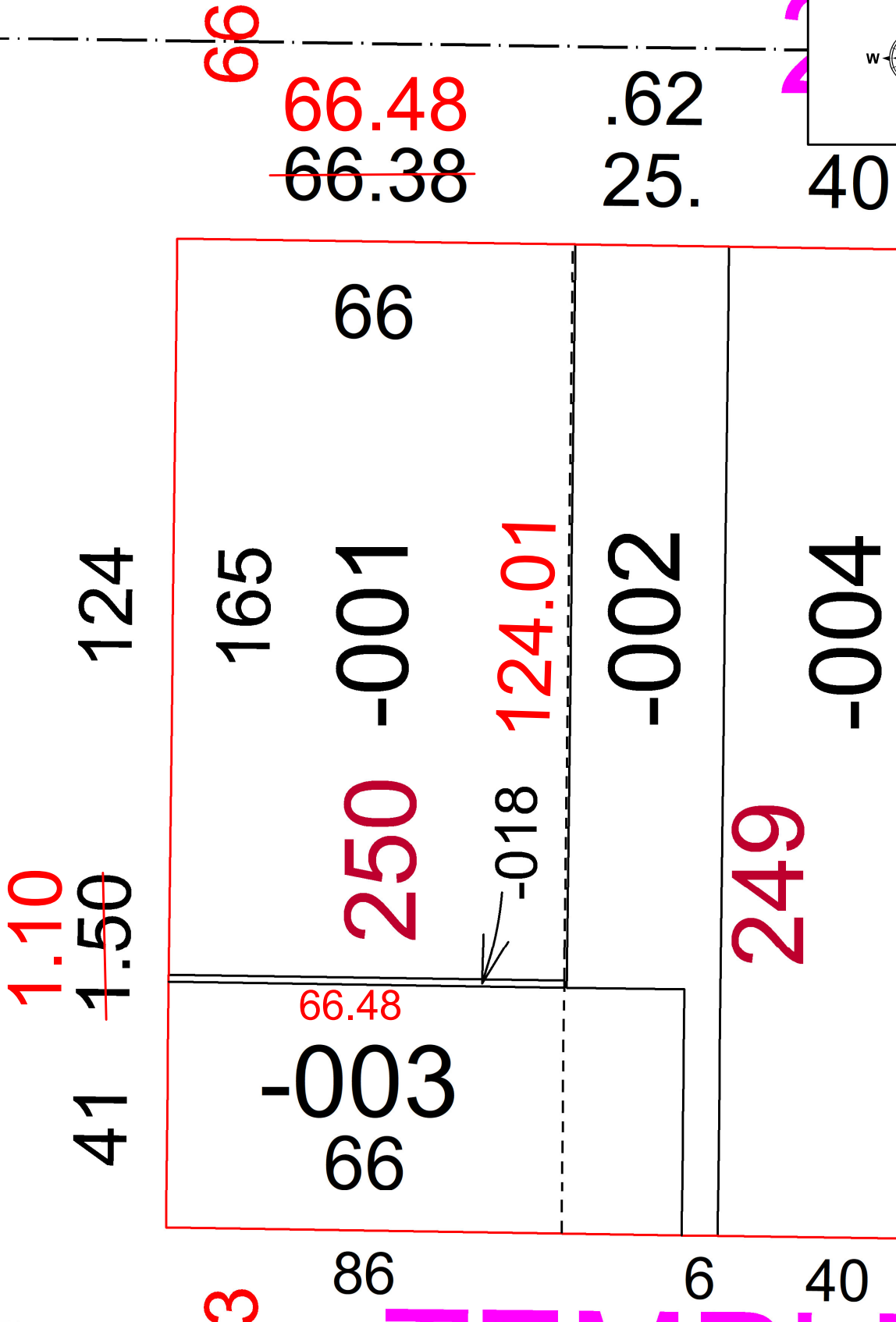
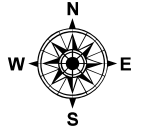
N/A

FRONTAGE & DEPTH CORRECTION PER SURVEYOR AMY KELLY

22-04989-C

STARTING POINT:

MAG NAIL @ INTERSECTION OF MIDDLE AVE & 2ND ST



SPLITS/DEEDS PROCESSED
 LORAIN COUNTY TAX MAP DEPARTMENT
 226 MIDDLE AVE. ELYRIA, OH

SURVEYED BY: AMY KELLY SURVEY # 50748
 CLOSURE: 1: 84147
 MAP PAGE(S): 06-26-060
 APPROVED BY: WRZ DATE: 12/6/2022
 SCALE: 1" = 25 PRIOR INSTRUMENT: #2012-0442403