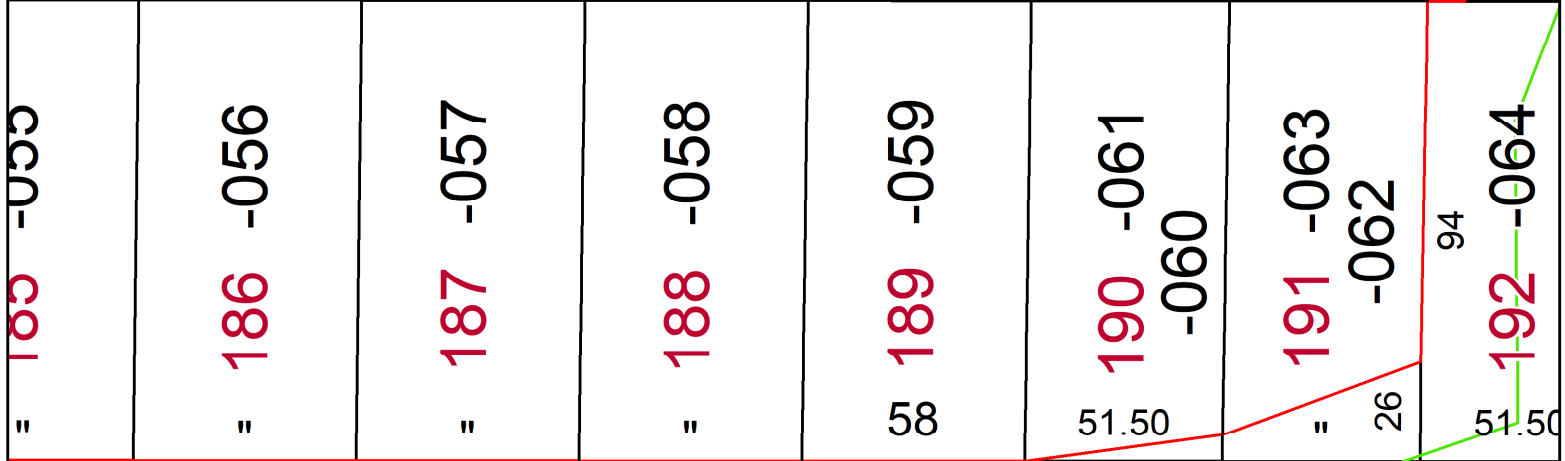
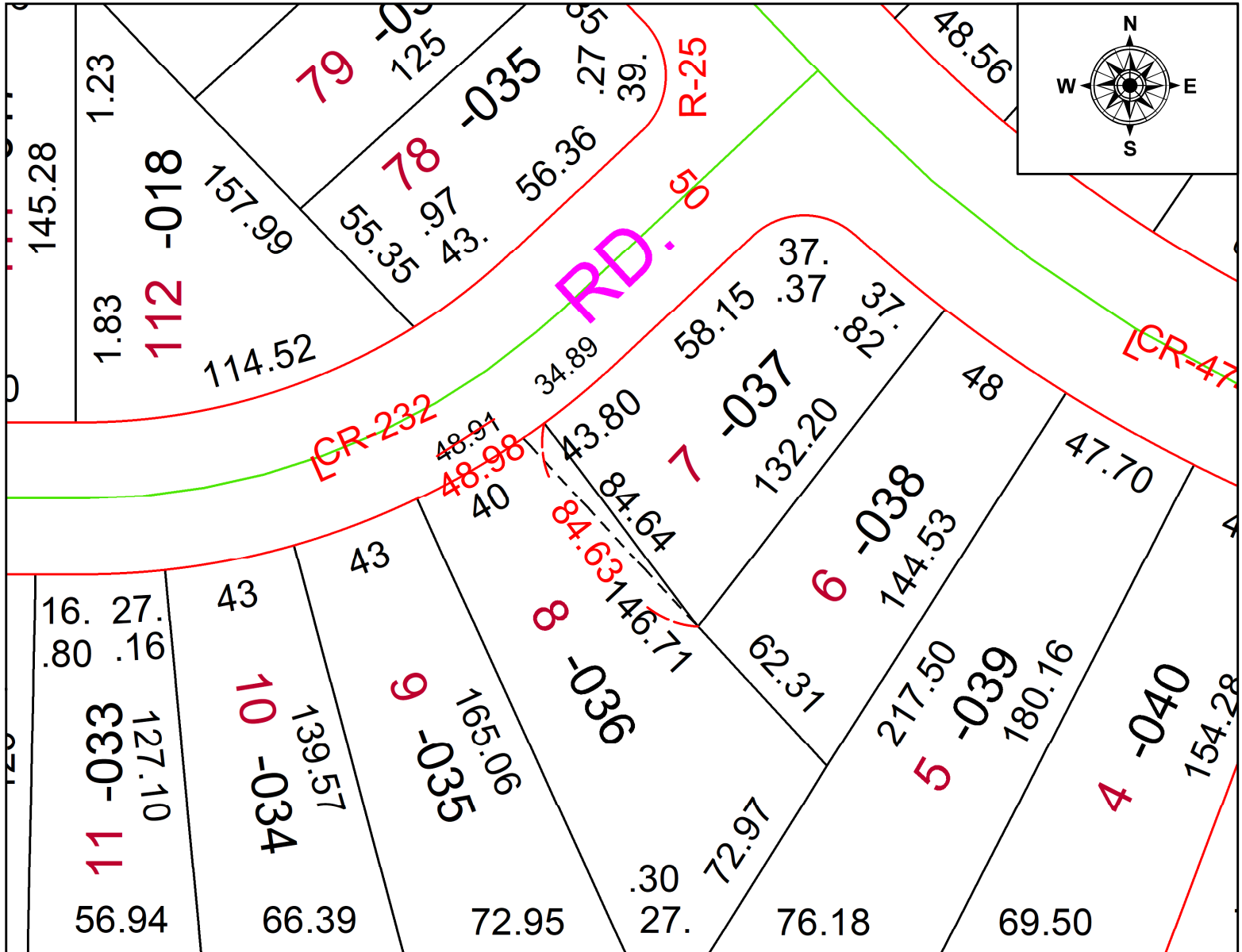


PARENT PARCEL: 06-24-028-108-036

CHILD PARCEL: **FRONT & DEPTH CORR PER SURV BY GEORGE A. HOFMANN**

22-04987-A

STARTING POINT: NE CORNER OF S/L 9



SPLITS/DEEDS PROCESSED
 LORAIN COUNTY TAX MAP DEPARTMENT
 226 MIDDLE AVE. ELYRIA, OH

SURVEYED BY: GEORGE A. HOFMANN SURV # 50745
 CLOSURE: 1: 115347
 MAP PAGE(S): 06-24-028
 APPROVED BY: AC DATE: November 22, 2022
 SCALE: 1 in = 50 ft PRIOR INSTRUMENT: 2022- 0882360