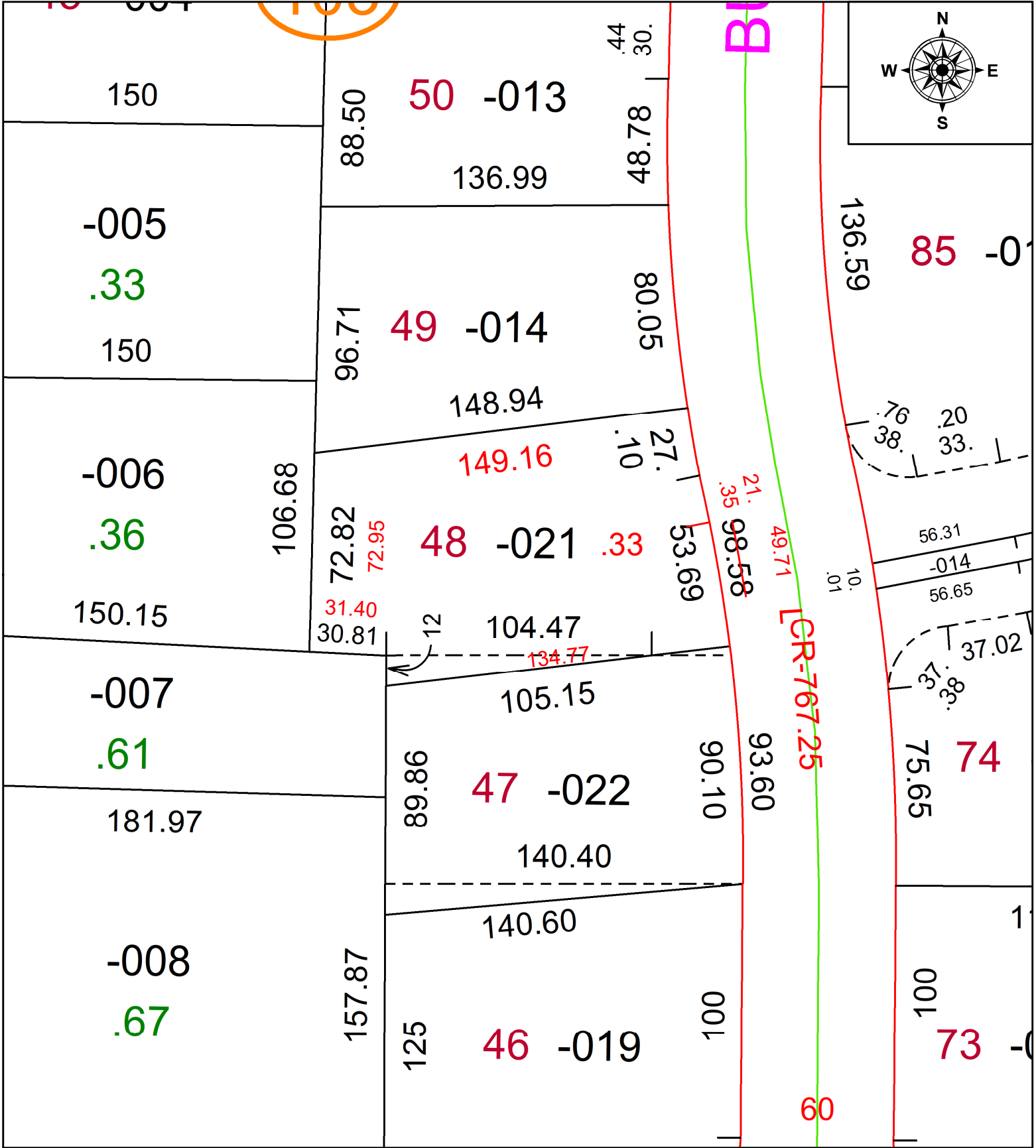


PARENT PARCEL: 05-00-043-103-021

CHILD PARCEL: **FRONT & DEPTH TO AC CORR PER SURV BY THOMAS SIMON**

22-04975-C

STARTING POINT: SE CORNER OF S/L 9 IN RIDGELAND HEIGHTS SUB NO. 3



**SPLITS/DEEDS PROCESSED**  
 LORAIN COUNTY TAX MAP DEPARTMENT  
 226 MIDDLE AVE. ELYRIA, OH

SURVEYED BY: THOMAS A. SIMON SURV # 50733  
 CLOSURE: 1: 89659  
 MAP PAGE(S): 05-00-043-A  
 APPROVED BY: AC DATE: November 03, 2022  
 SCALE: 1 in = 50 ft PRIOR INSTRUMENT: 2022- 0861951