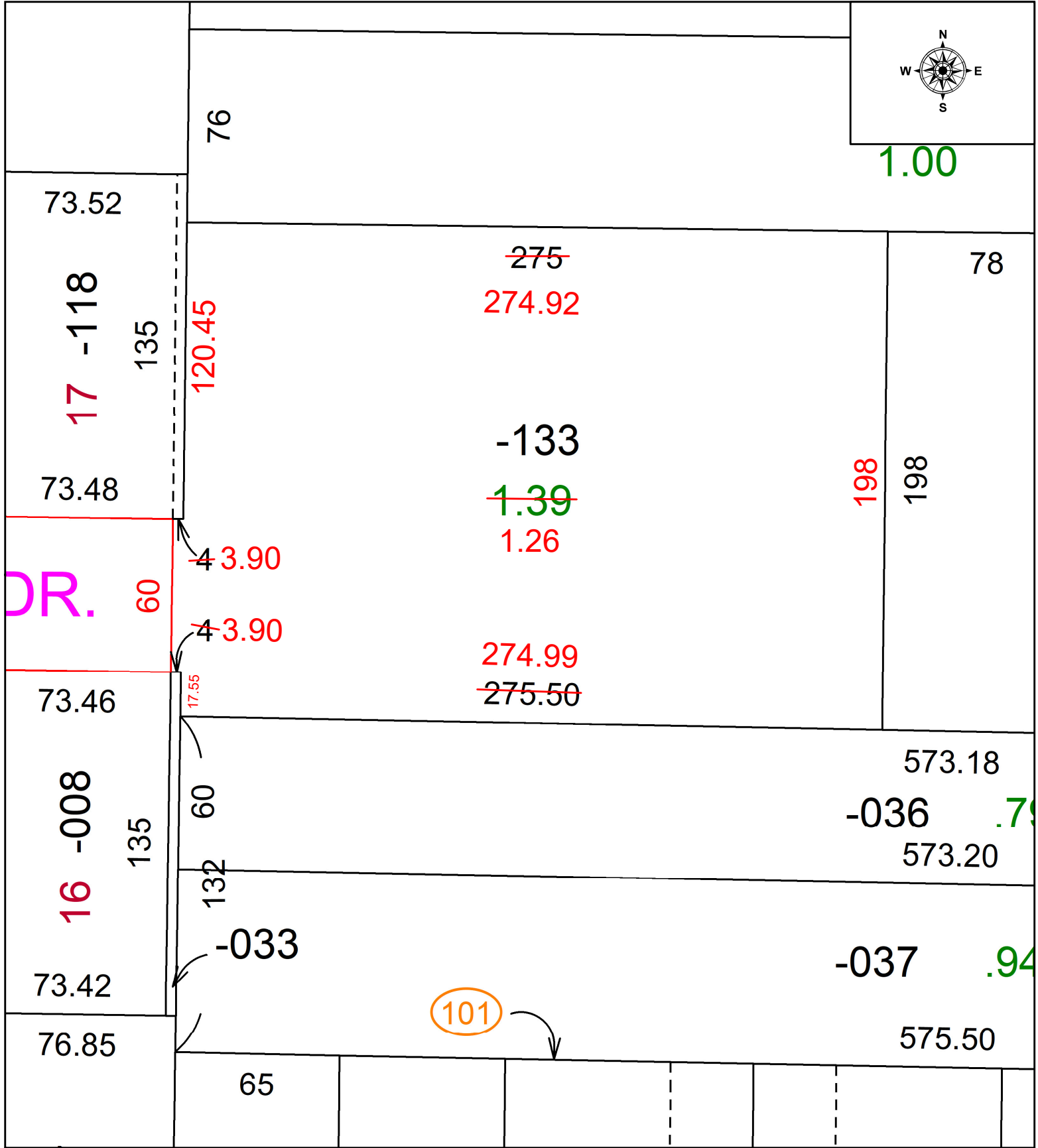
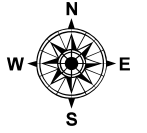


PARENT PARCEL: 18-00-028-101-133

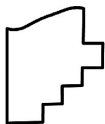
22-04974-C

CHILD PARCEL: N/A ACREAGE CORRECTION PER SURVEYOR TED SPILLMAN

STARTING POINT: IRON ROD @ SOUTHEAST CORNER OF S/L 17 WENNER ALLOTMENT CORP. SUBDIVISION NO. 2



101



SPLITS/DEEDS PROCESSED
LORAIN COUNTY TAX MAP DEPARTMENT
226 MIDDLE AVE. ELYRIA, OH

SURVEYED BY: THEODORE SPILLMAN SURVEY # 50732
 CLOSURE: 1: 918806
 MAP PAGE(S): 18-00-028
 APPROVED BY: WRZ DATE: 11/3/2022
 SCALE: 1" = 50 PRIOR INSTRUMENT: #2022-0890488