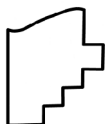
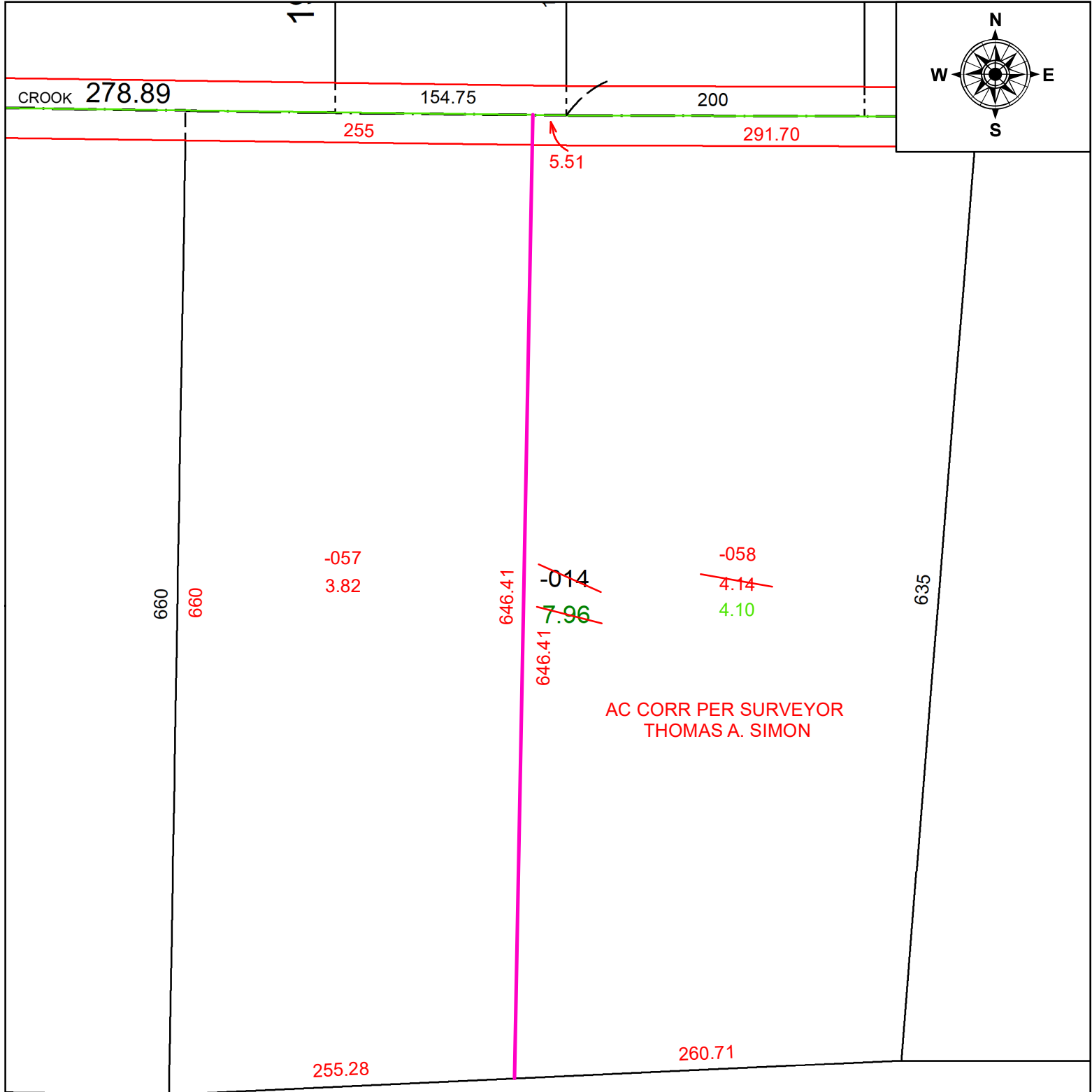


PARENT PARCEL: 16-00-020-000-014

CHILD PARCEL: 16-00-020-000-057 & -058

25-04973

STARTING POINT: INTERSECTION CRROK ST AND NW CORNER OF ORIGINAL LOT No. 20



SPLITS/DEEDS PROCESSED
 LORAIN COUNTY TAX MAP DEPARTMENT
 226 MIDDLE AVE. ELYRIA, OH

SURVEYED BY: THOMAS A. SIMON **SURVEY #:** 51388
CLOSURE: 1: 351155
MAP PAGE(S): 16-00-020
APPROVED BY: BB **DATE:** 2/4/2025
SCALE: 1" = 90' **PRIOR INSTRUMENT:** #20070207603