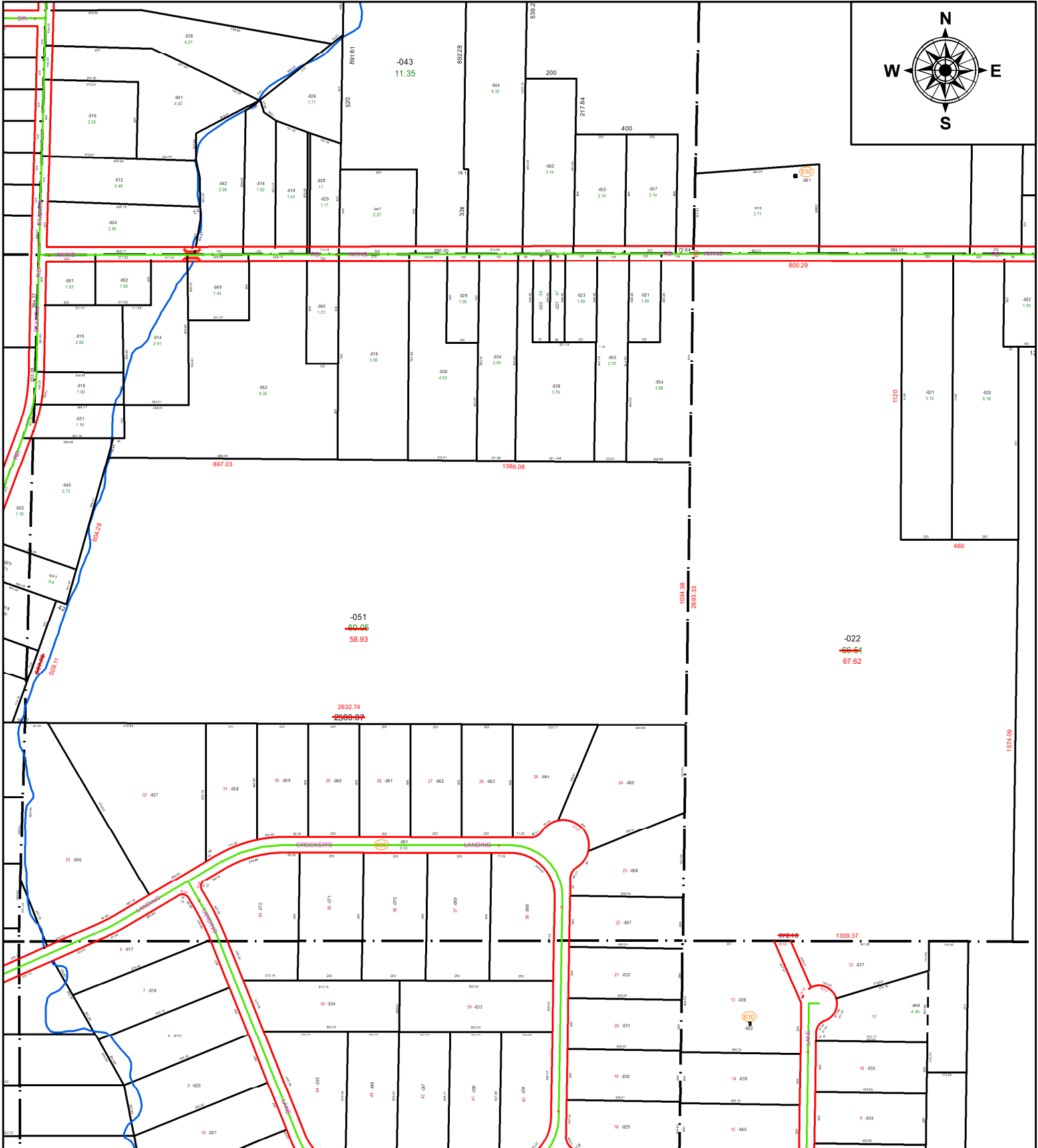


PARENT PARCEL: 12-00-069-000-022 & 12-00-072-000-051

CHILD PARCEL: **AC CORR PER SURV BY STEVEN J. METCALF**

STARTING POINT: C/L OF AKINS RD AND O/L 69

22-04967-A



SPLITS/DEEDS PROCESSED
 LORAIN COUNTY TAX MAP DEPARTMENT
 226 MIDDLE AVE. ELYRIA, OH

SURVEYED BY: STEVEN J. METCALF

SURV # 50728

CLOSURE: 1: 746673

MAP PAGE(S): 12-00-069, -072

APPROVED BY: AC DATE: October 26, 2022

SCALE: 1 in = 500 ft PRIOR INSTRUMENT: 2016- 0573888