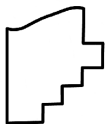
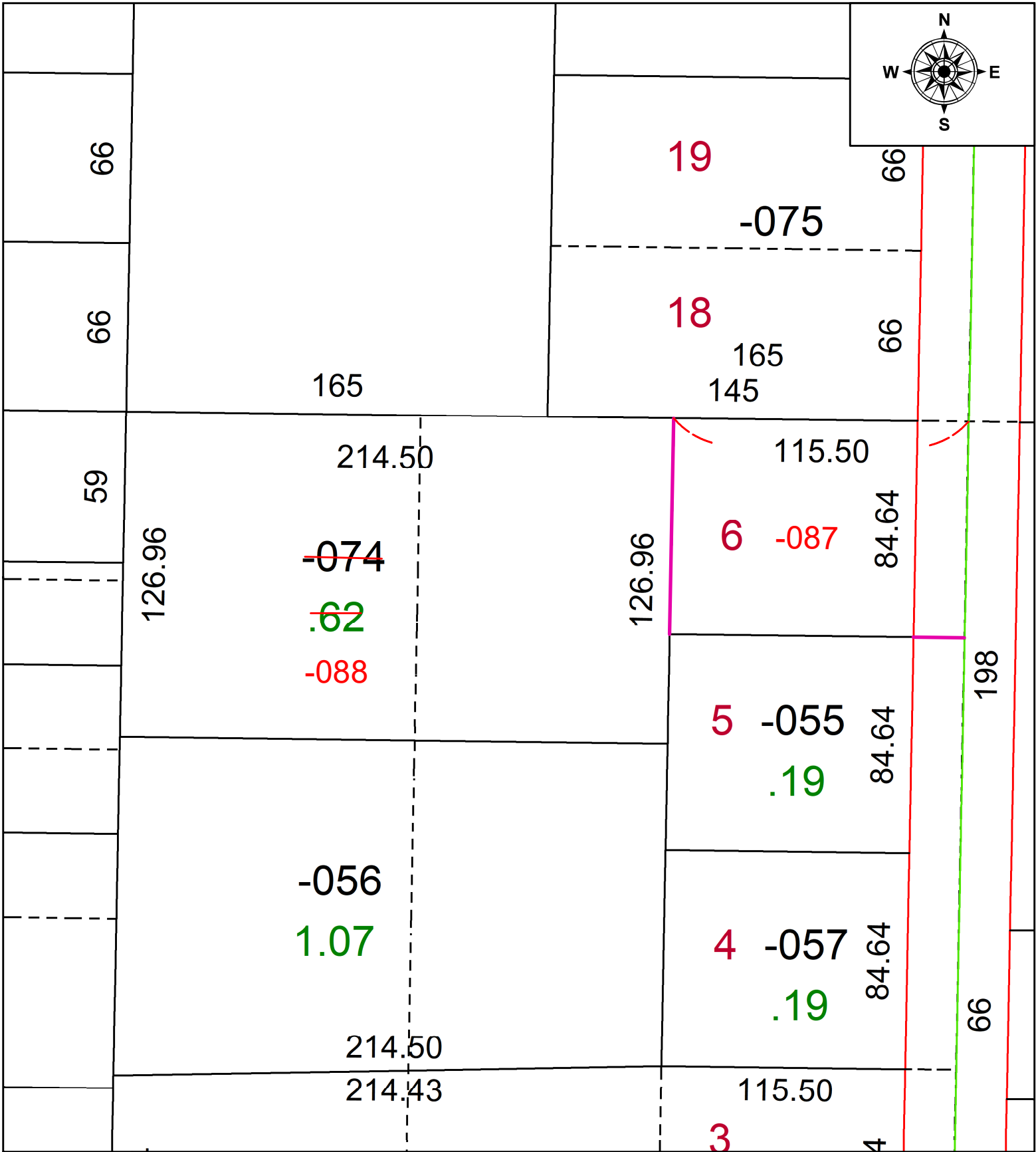
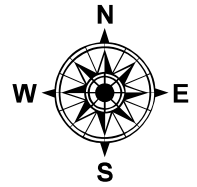


PARENT PARCEL: 09-00-076-103-074

CHILD PARCEL: 09-00-076-103-087 & -088

STARTING POINT: **UNCOMBINATION PER PRIOR DEED**

22-04961-U



SPLITS/DEEDS PROCESSED
 LORAIN COUNTY TAX MAP DEPARTMENT
 226 MIDDLE AVE. ELYRIA, OH

SURVEYED BY: _____ N/A SURV # N/A
 CLOSURE: _____ N/A
 MAP PAGE(S): 09-00-076-A
 APPROVED BY: AC DATE: October 11, 2022
 SCALE: 1 in = 50 ft PRIOR INSTRUMENT: 2018- 0664485