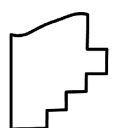
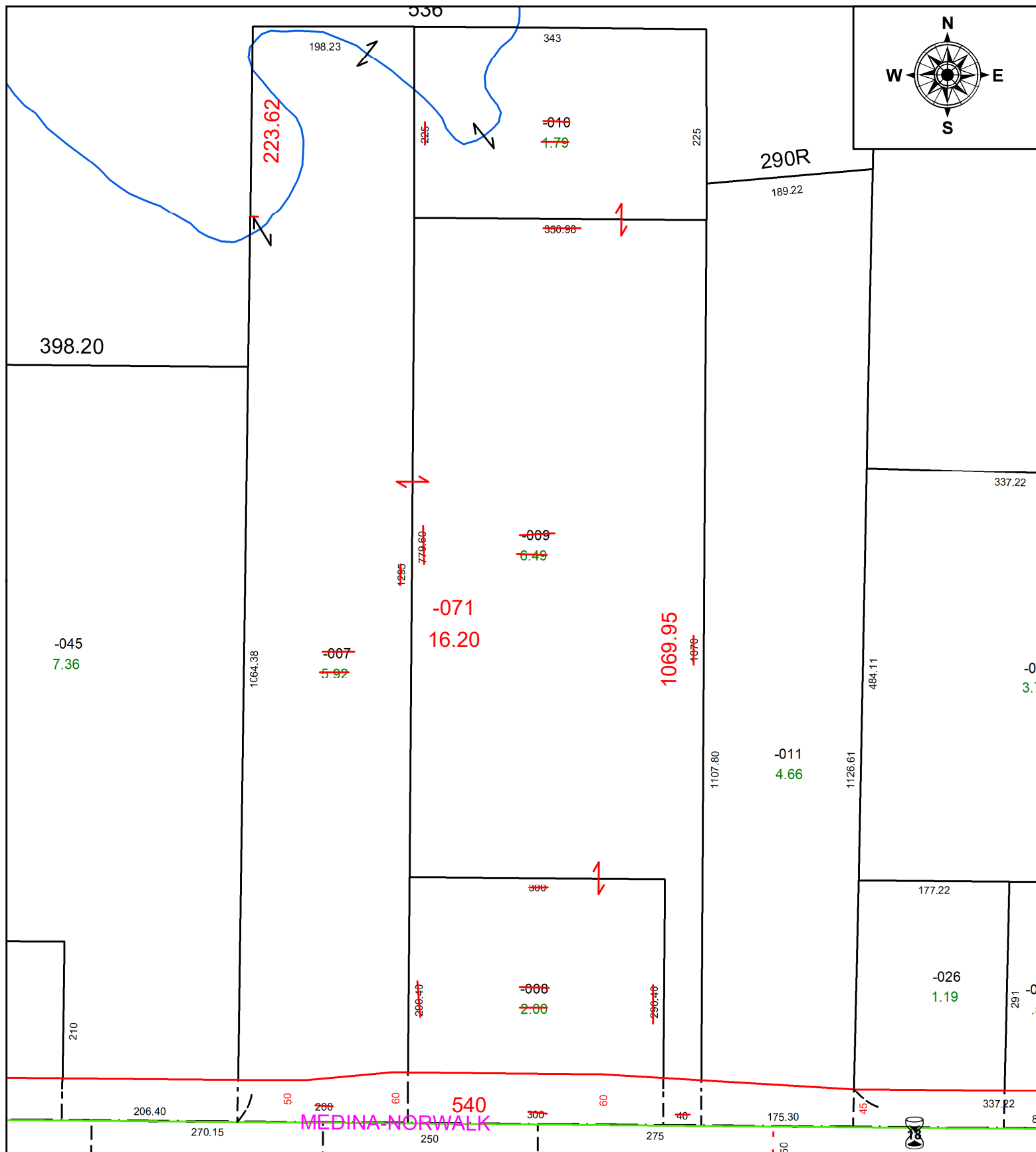


PARENT PARCEL: 18-00-016-000-007, -008, -009, & -010

CHILD PARCEL: **18-00-016-000-071**

STARTING POINT: SW CORNER OF O/L 16 AND C/L OF SR 18

25-04958



**SPLITS/DEEDS PROCESSED**  
 LORAIN COUNTY TAX MAP DEPARTMENT  
 226 MIDDLE AVE. ELYRIA, OH

SURVEYED BY: THOMAS M. SNEZEK SURV # 51369  
 CLOSURE: 1: 611110  
 MAP PAGE(S): 18-00-016  
 APPROVED BY: AC DATE: January 15, 2025  
 SCALE: 1 in = 150 ft PRIOR INSTRUMENT: 2024- 0035603