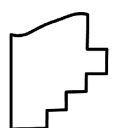
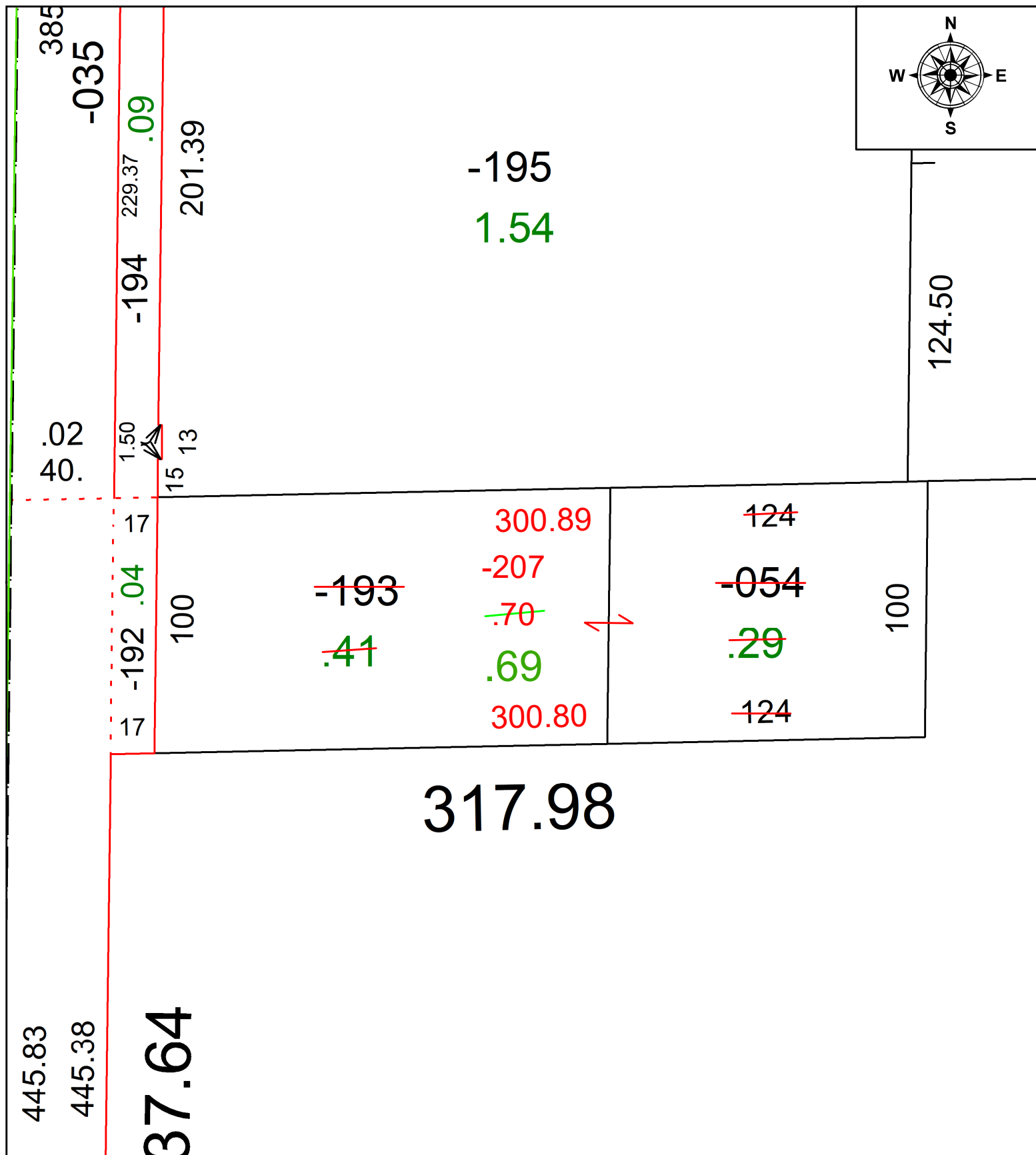


PARENT PARCEL: 03-00-001-000-054 & -193

CHILD PARCEL: 03-00-001-000-207

STARTING POINT: **AC CORR PER SURV BY SCOTT J. CASEY**

25-04957



SPLITS/DEEDS PROCESSED
LORAIN COUNTY TAX MAP DEPARTMENT
226 MIDDLE AVE. ELYRIA, OH

SURVEYED BY: SCOTT J. CASEY SURV # 51368
 CLOSURE: 1: 285393
 MAP PAGE(S): 03-00-001
 APPROVED BY: AC DATE: January 14, 2025
 SCALE: 1 in = 50 ft PRIOR INSTRUMENT: 1999-0641197