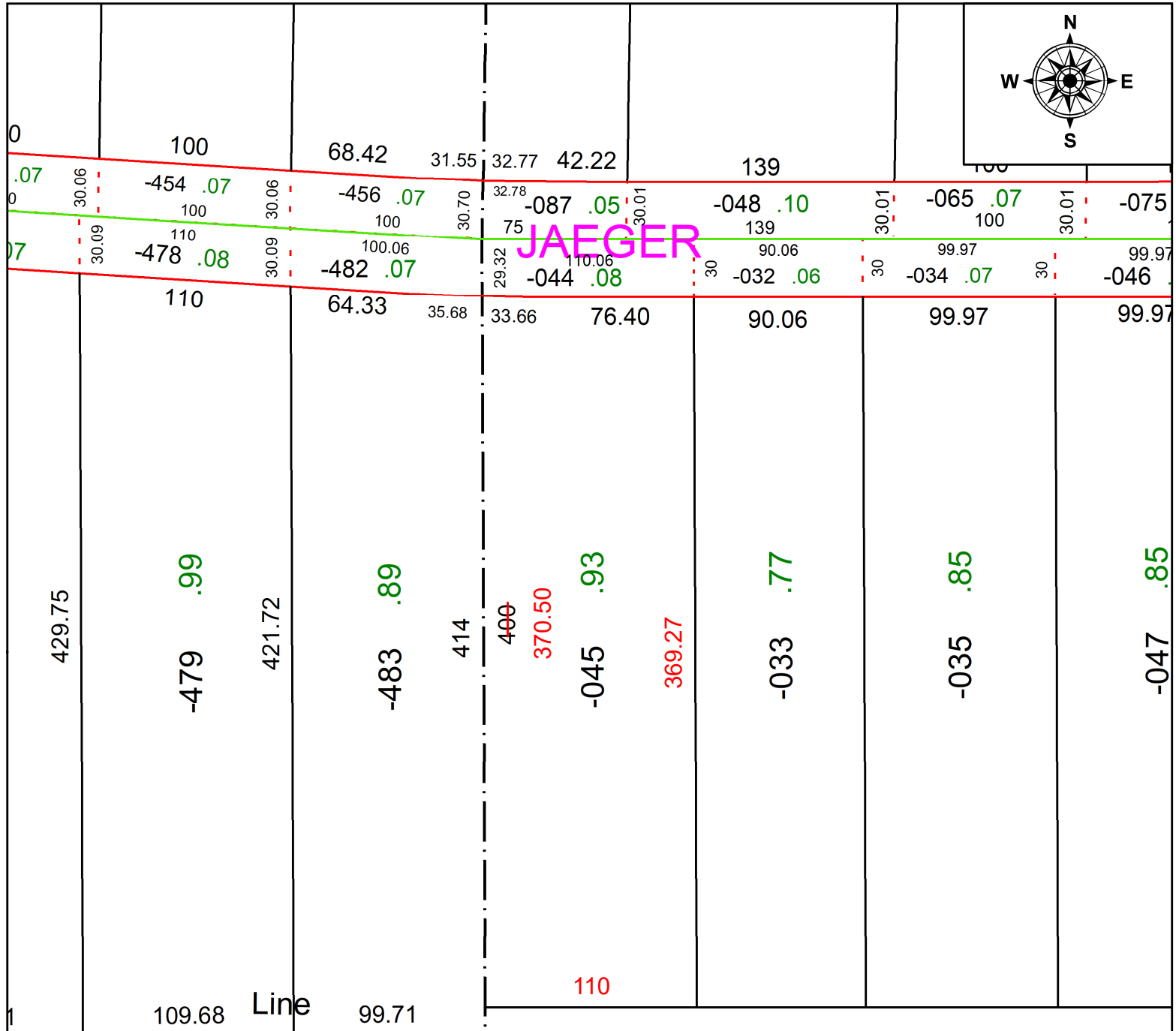


PARENT PARCEL: 02-02-009-102-045

CHILD PARCEL: **MAP CORRECTION ONLY**

STARTING POINT: W LINE OF O/L 9 AND C/L JAEGER RD

22-04954-C



SPLITS/DEEDS PROCESSED
 LORAIN COUNTY TAX MAP DEPARTMENT
 226 MIDDLE AVE. ELYRIA, OH

SURVEYED BY: WILFREDO BARBOSA SURV # 50683

CLOSURE: 1: 233638

MAP PAGE(S): 02-02-009-A

APPROVED BY: AC DATE: September 21, 2022

SCALE: 1 in = 75 ft PRIOR INSTRUMENT: 2007- 0208959