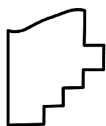
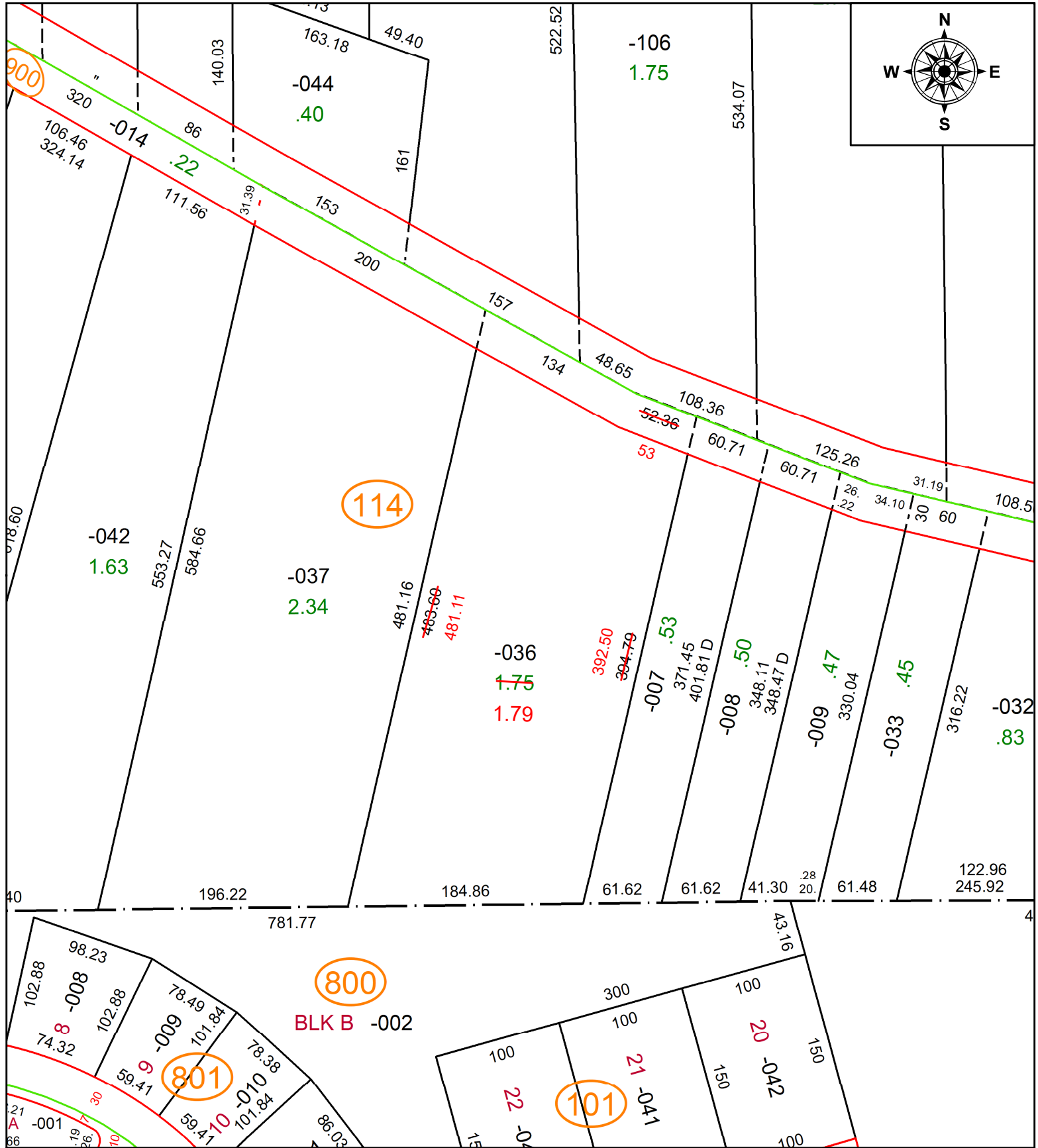


PARENT PARCEL: 04-00-010-114-036

CHILD PARCEL: **AC CORR PER SURV BY SEAN A. BOLAND**

22-04952-A

STARTING POINT: C/L OF WHITEHEAD AND SR 303



**SPLITS/DEEDS PROCESSED**  
 LORAIN COUNTY TAX MAP DEPARTMENT  
 226 MIDDLE AVE. ELYRIA, OH

SURVEYED BY: SEAN A. BOLAND	SURV # 50698
CLOSURE: 1: 189000	
MAP PAGE(S): 04-00-010-E	
APPROVED BY: AC	DATE: September 27, 2022
SCALE: 1 in = 100 ft	PRIOR INSTRUMENT: 2014- 0491125