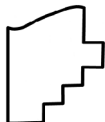
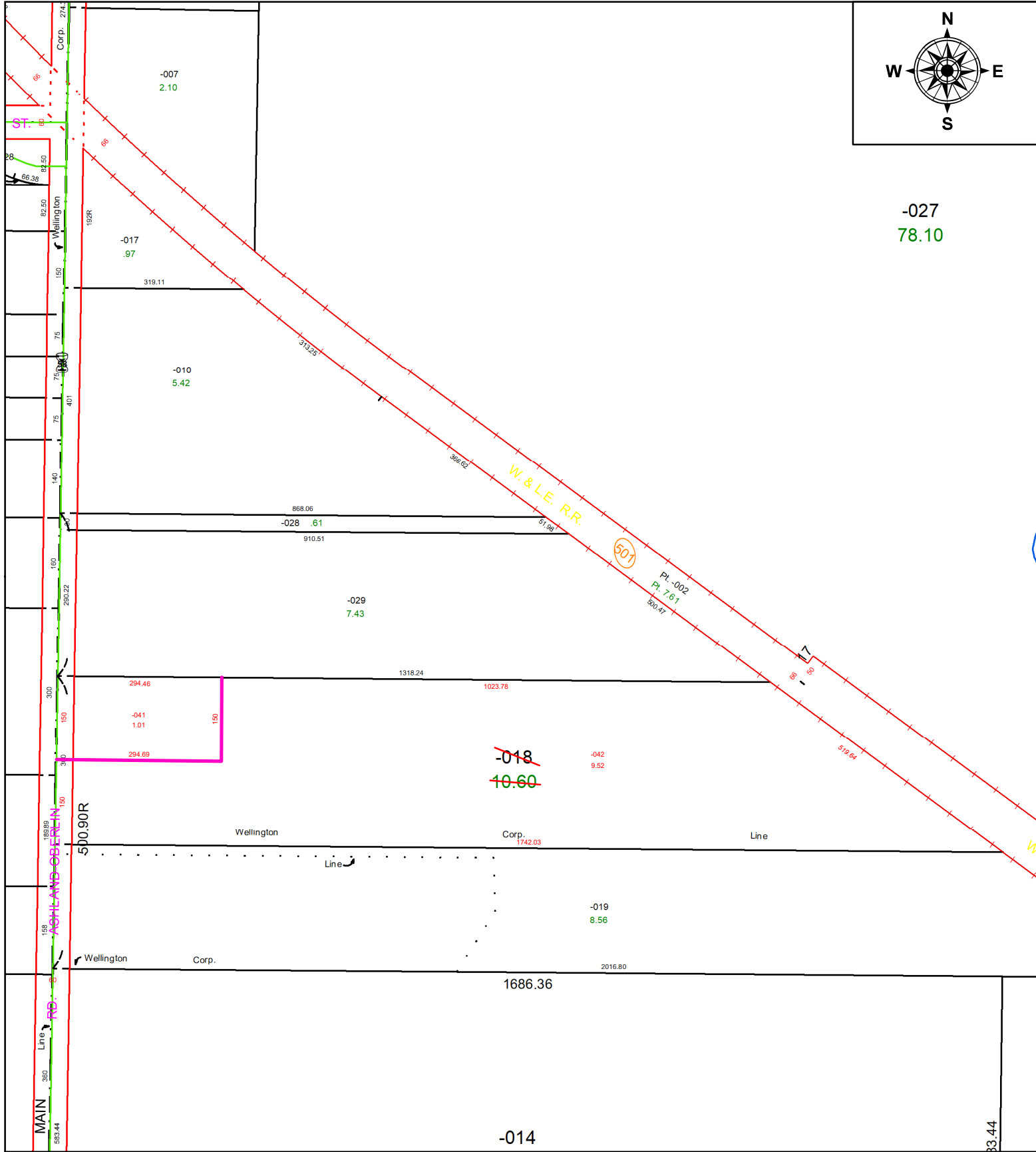
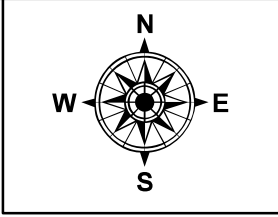


PARENT PARCEL: 18-00-023-000-018

CHILD PARCEL: 18-00-023-000-041 & -042

STARTING POINT: NW CORNER OF OL. 23

24-04951



SPLITS/DEEDS PROCESSED
LORAIN COUNTY TAX MAP DEPARTMENT
226 MIDDLE AVE. ELYRIA, OH

SURVEYED BY: THOMAS M. SNEZEK SURVEY #: 51352
CLOSURE: 1: 113665
MAP PAGE(S): 1100051
APPROVED BY: BB DATE: 12/26/2024
SCALE: 1" = 230' PRIOR INSTRUMENT: #20060133478