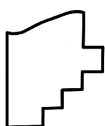
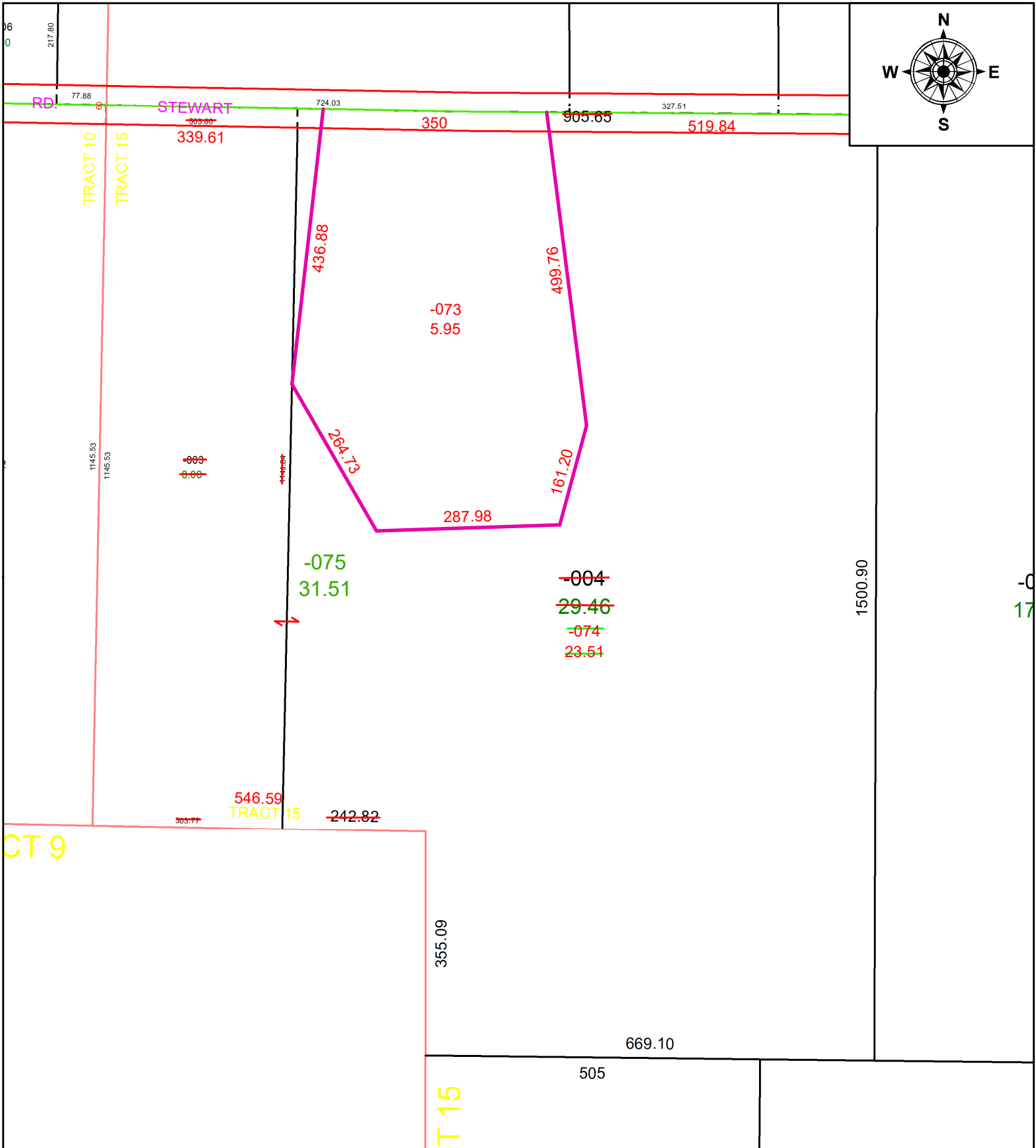


PARENT PARCEL: 21-15-000-000-003 & -004

CHILD PARCEL: 21-15-000-000-073, -074, & -075

24-04946

STARTING POINT: **C/L OF STEWART RD AND W LINE OF TRACT 15**



**SPLITS/DEEDS PROCESSED**  
LORAIN COUNTY TAX MAP DEPARTMENT  
226 MIDDLE AVE. ELYRIA, OH

SURVEYED BY: MICHAEL R. SHELESTOVICH SURV # 51344

CLOSURE: 1: 737194

MAP PAGE(S): 21-15

APPROVED BY: AC DATE: December 17, 2024

SCALE: 1 in = 200 ft PRIOR INSTRUMENT: 2023- 0909201