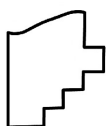
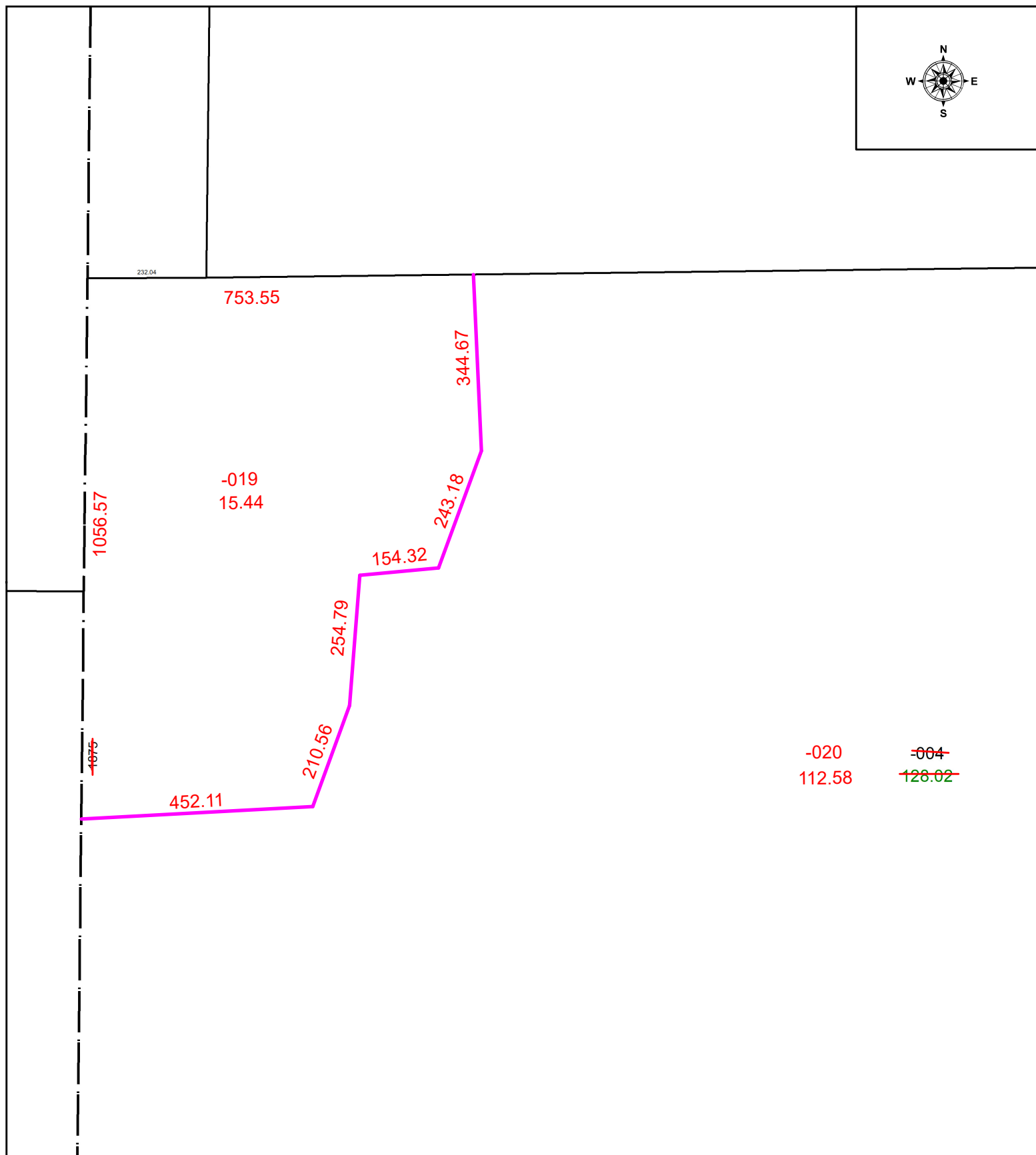
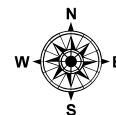


PARENT PARCEL: 18-00-005-000-004

CHILD PARCEL: 18-00-005-000-019 & -020

STARTING POINT: INTERSECTION OF C/L PECK WADSWORTH RD & NORTHWESTERLY CORNER OF O.L. 5

24-04945



**SPLITS/DEEDS PROCESSED**  
 LORAIN COUNTY TAX MAP DEPARTMENT  
 226 MIDDLE AVE. ELYRIA, OH

SURVEYED BY: THOMAS SIMON SURVEY # 51342  
 CLOSURE: 1: 345066  
 MAP PAGE(S): 18-00-005  
 APPROVED BY: WRZ DATE: 12/13/2024  
 SCALE: 1" = 250 PRIOR INSTRUMENT: #1980-0063308