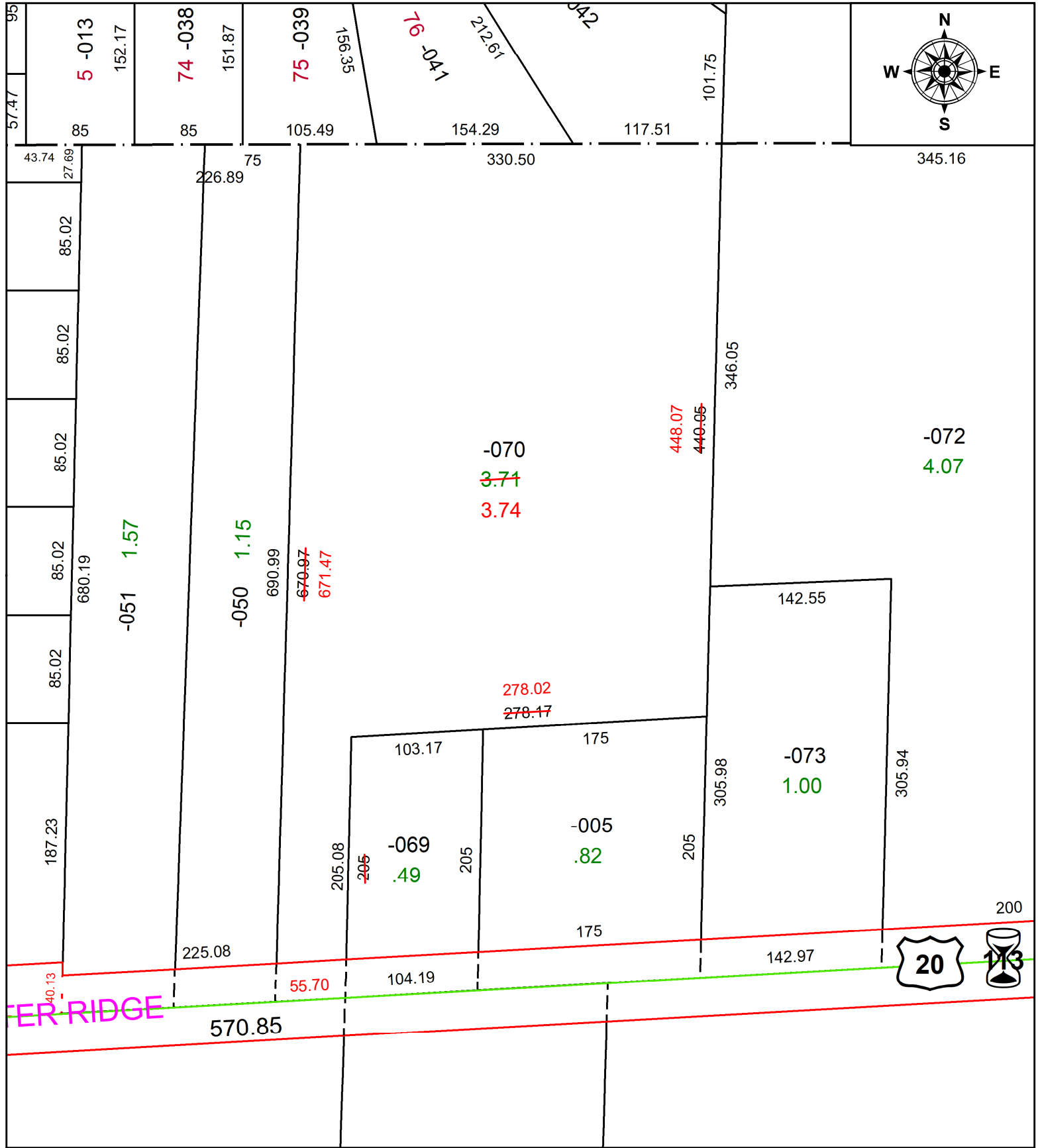


PARENT PARCEL: 07-00-039-000-069, -070

CHILD PARCEL: **AC CORR PER SURV BY SAMUEL A. MILES**

STARTING POINT: SE CORNER OF SANDY RIDGE SUBDIVISION NO. 3

22-04944-A



SANDY RIDGE



SPLITS/DEEDS PROCESSED
 LORAIN COUNTY TAX MAP DEPARTMENT
 226 MIDDLE AVE. ELYRIA, OH

SURVEYED BY: SAMUEL A. MILES SURV # 50687
 CLOSURE: 1: 343257
 MAP PAGE(S): 07-00-039
 APPROVED BY: AC DATE: September 12, 2022
 SCALE: 1 in = 100 ft PRIOR INSTRUMENT: 2020- 0785454