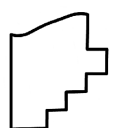
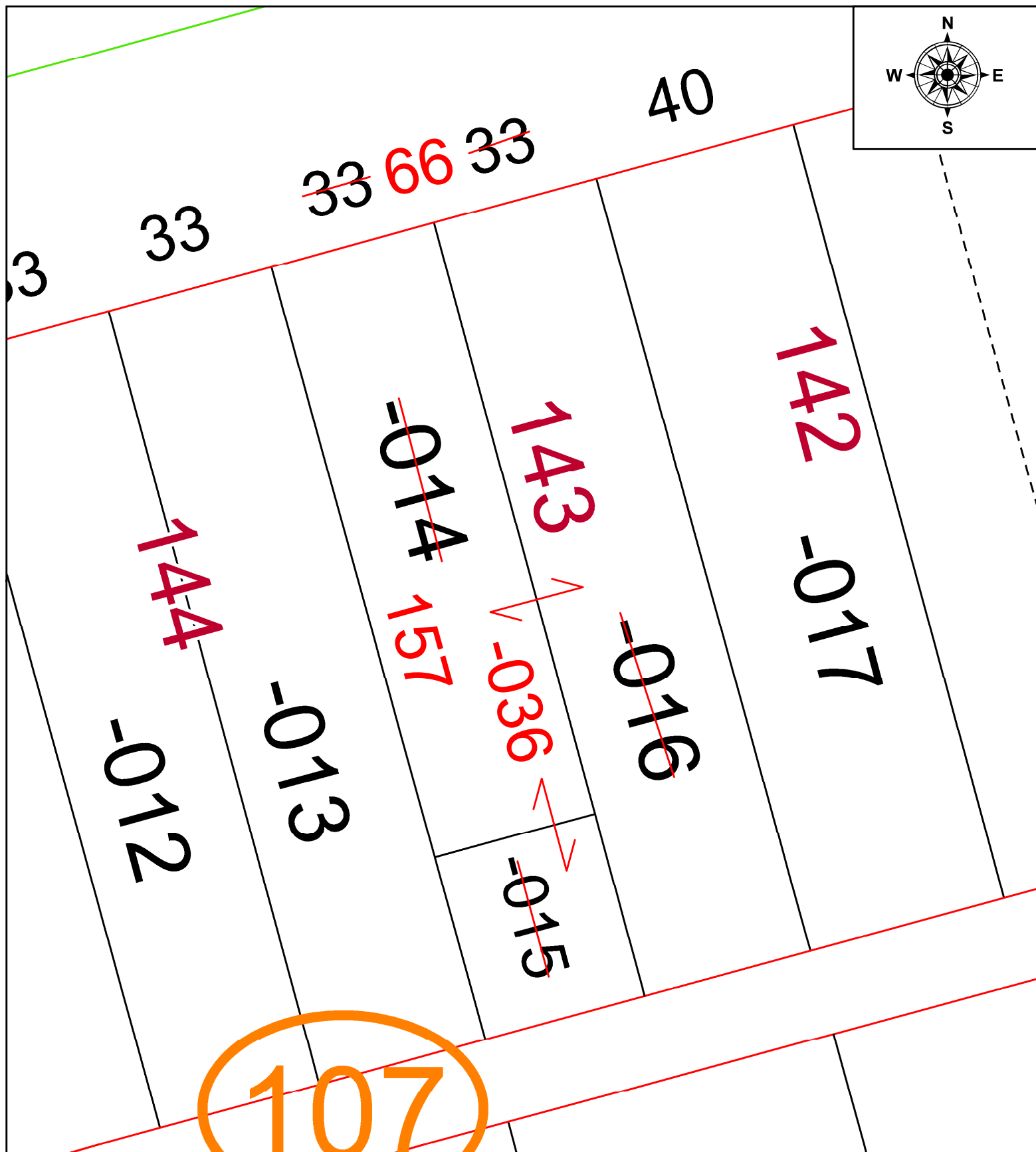
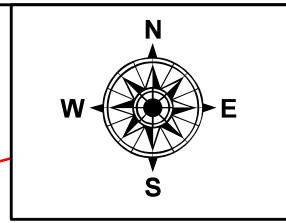


PARENT PARCEL: 02-01-006-107-014, -015, & -016

CHILD PARCEL: 02-01-006-107-036

STARTING POINT: COMBINATION PER LEGAL DESCRIPTION

22-04940-C



SPLITS/DEEDS PROCESSED
 LORAIN COUNTY TAX MAP DEPARTMENT
 226 MIDDLE AVE. ELYRIA, OH

SURVEYED BY:	N/A	SURV #	N/A
CLOSURE:	N/A		
MAP PAGE(S):	02-01-006-B		
APPROVED BY:	AC	DATE:	August 29, 2022
SCALE:	1" = 25'	PRIOR INSTRUMENT:	2020- 0748679