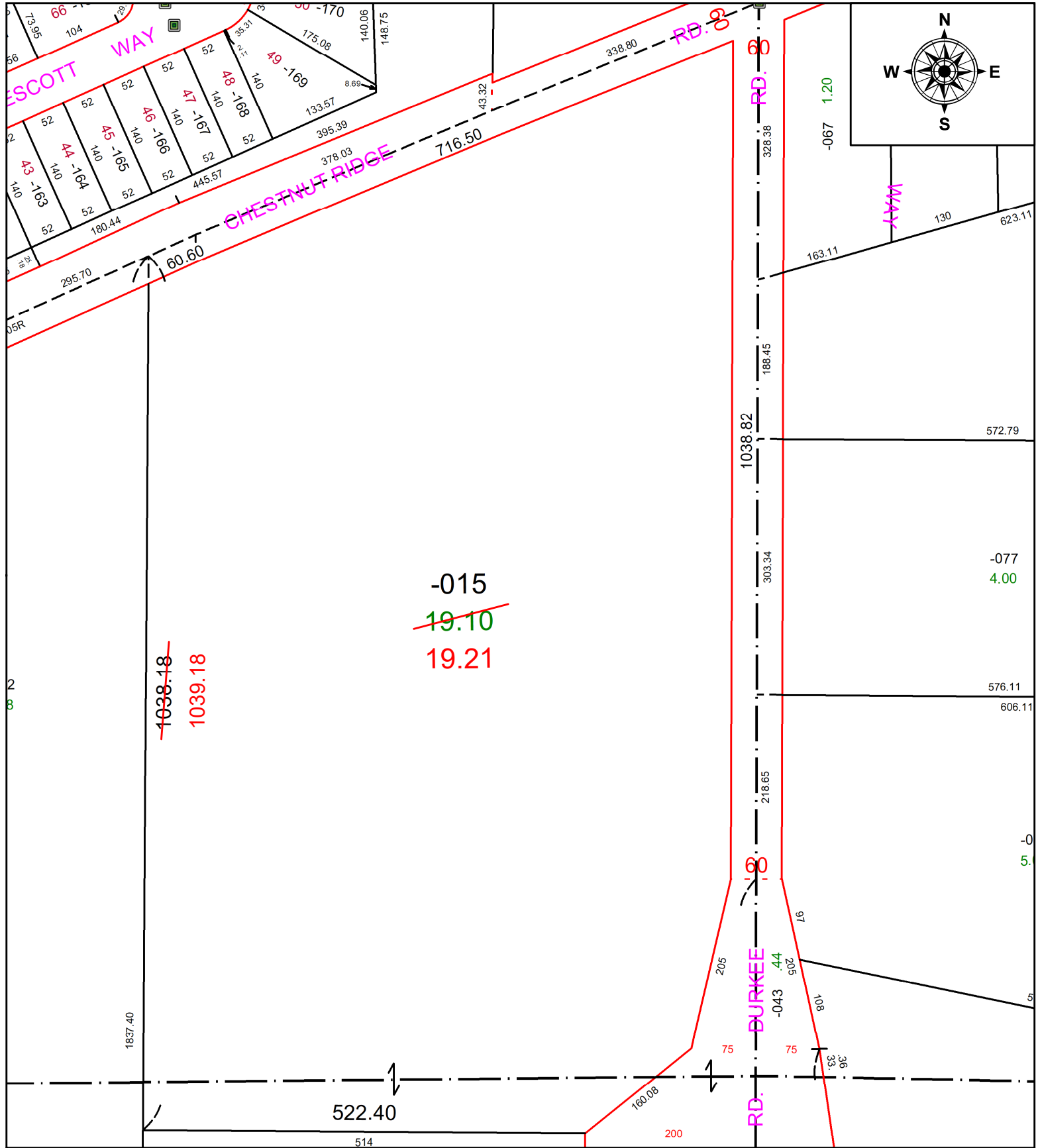


PARENT PARCEL: 11-00-090-000-015

CHILD PARCEL: AC. CORR. PER PRIOR INSTRUMENT # 2007-0203462

STARTING POINT: N/A

22-04939-A



SPLITS/DEEDS PROCESSED
 LORAIN COUNTY TAX MAP DEPARTMENT
 226 MIDDLE AVE. ELYRIA, OH

SURVEYED BY: KS & ASSOCS.	SURVEY #: N/A
CLOSURE: N/A	
MAP PAGE(S): 11-00-090	
APPROVED BY: DMA	DATE: 8/24/2022
SCALE: 1" = 150'	PRIOR INSTRUMENT: 2007-0203462