

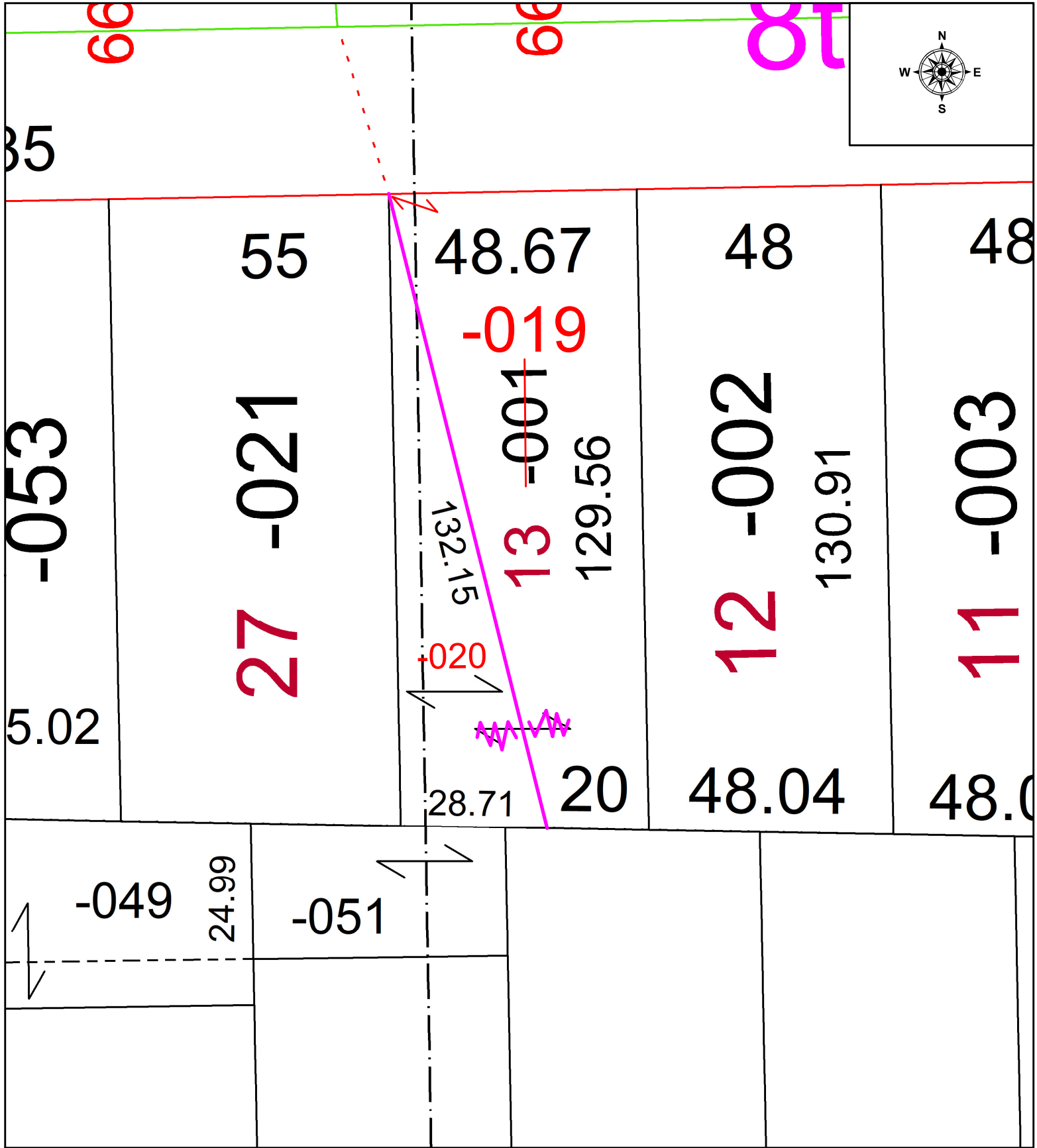
PARENT PARCEL: 02-01-005-116-001

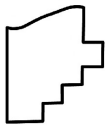
CHILD PARCEL: 02-01-005-116-019 & -020

UNCOMBINATION PER PRIOR DEED INSTR. #2022-0875718

22-04936-U

STARTING POINT: N/A



 **SPLITS/DEEDS PROCESSED**  
 LORAIN COUNTY TAX MAP DEPARTMENT  
 226 MIDDLE AVE. ELYRIA, OH

SURVEYED BY: N/A SURVEY # N/A  
 CLOSURE: N/A  
 MAP PAGE(S): 02-01-005  
 APPROVED BY: WRZ DATE: 8/19/2022  
 SCALE: 1" = 25' PRIOR INSTRUMENT: 2022-0875718