

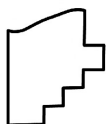
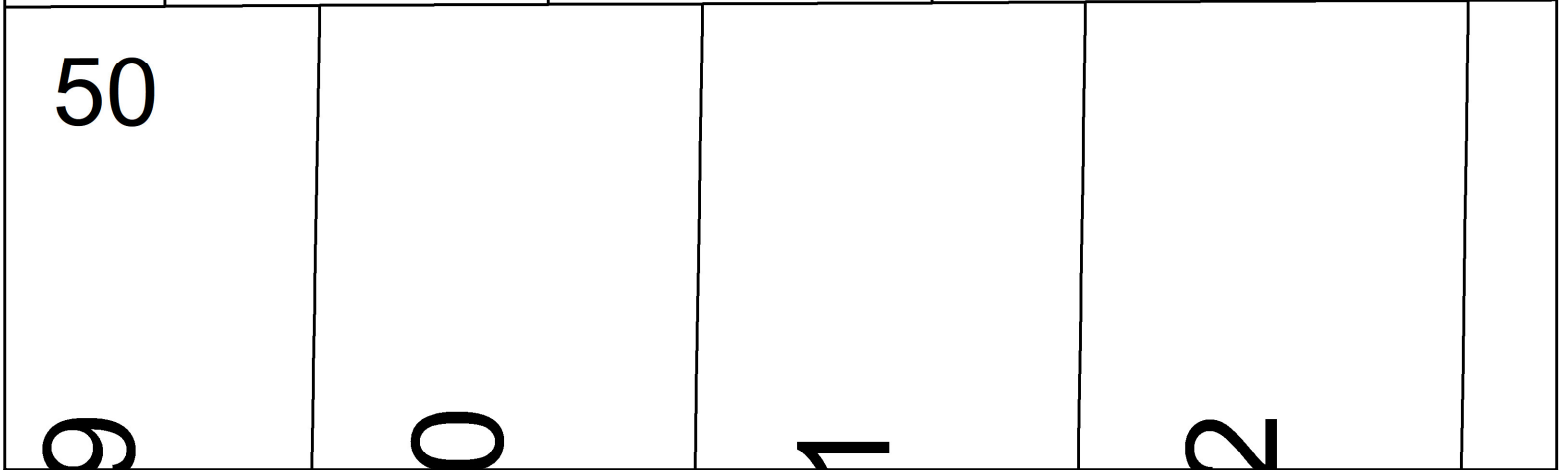
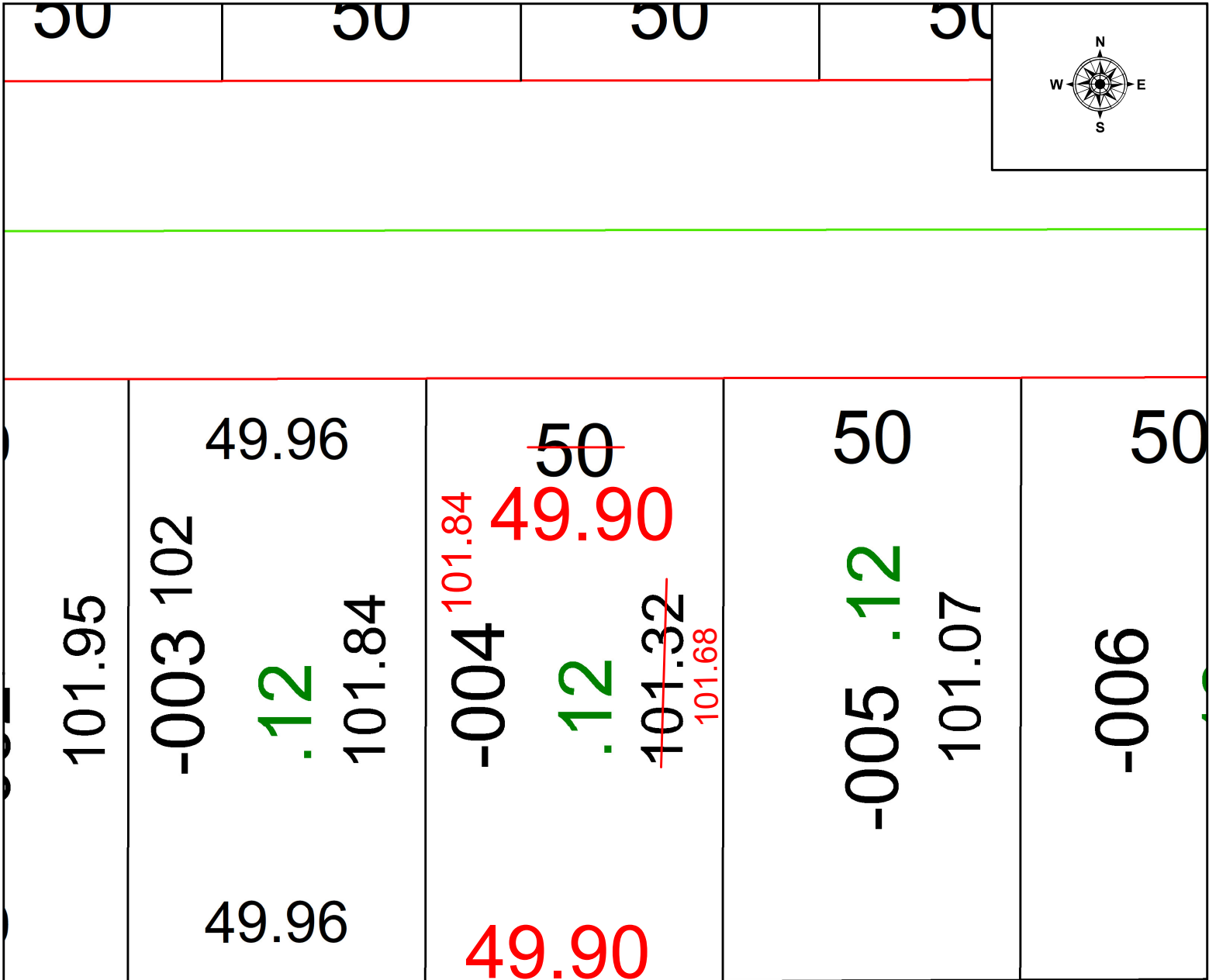
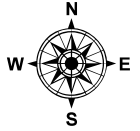
PARENT PARCEL: 06-24-026-103-004

CHILD PARCEL: N/A

MAP CORRECTION ONLY

22-04930-C

STARTING POINT: INTERSECTION OF C/LS OF PENFIELD AVE & BELL AVE



SPLITS/DEEDS PROCESSED
 LORAIN COUNTY TAX MAP DEPARTMENT
 226 MIDDLE AVE. ELYRIA, OH

SURVEYED BY: THOMAS SIMON SURVEY # 50668
 CLOSURE: 1: 72056
 MAP PAGE(S): 06-24-026
 APPROVED BY: WRZ DATE: 8/16/2022
 SCALE: 1" = 25 PRIOR INSTRUMENT: 2022-0879710