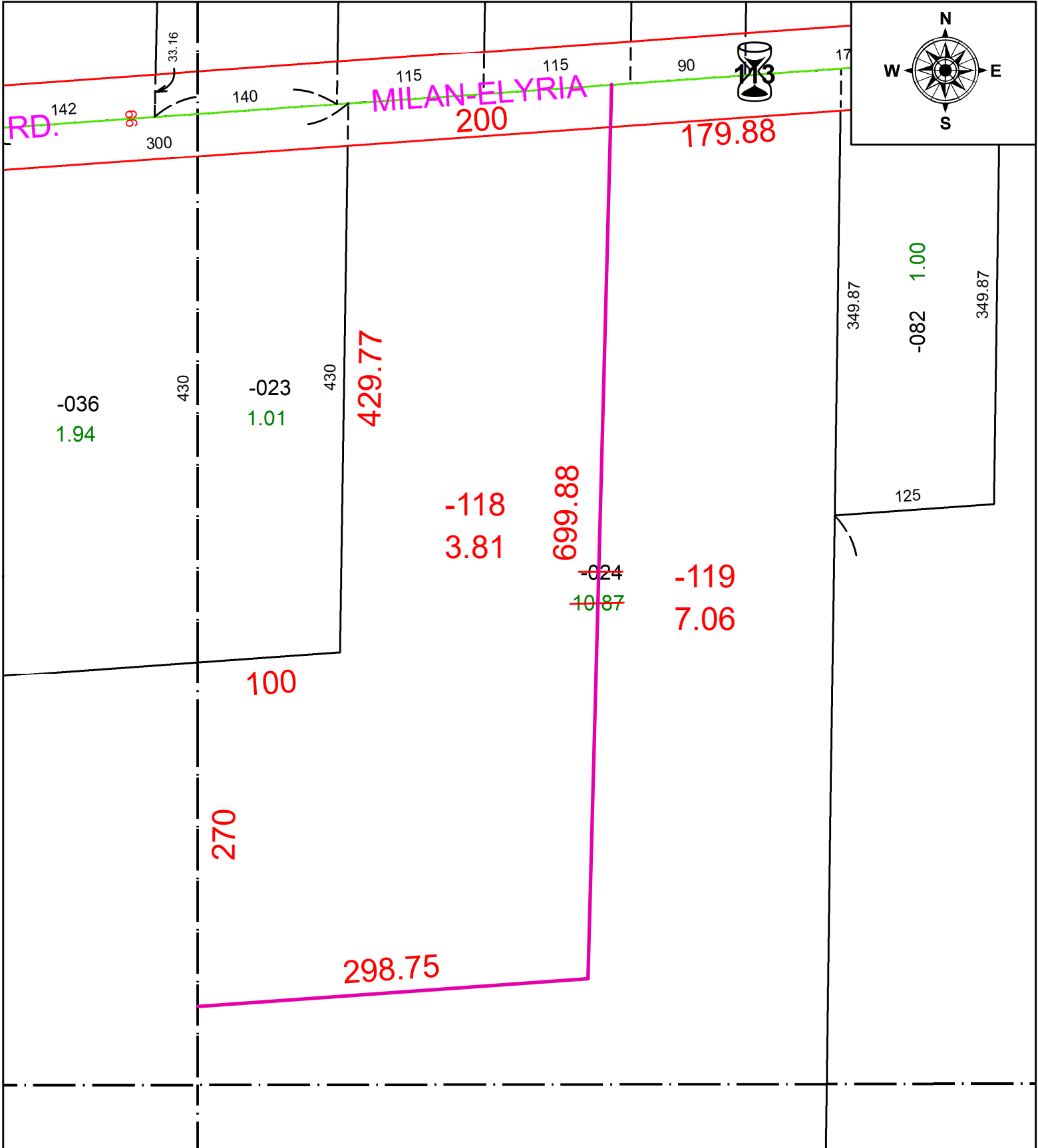


PARENT PARCEL: 05-00-053-000-024

CHILD PARCEL: 05-00-053-000-118 & -119

STARTING POINT: C/L OF SR 113 & STAION BOX RECORDED IN VOL 69, PG 21

24-04926



**SPLITS/DEEDS PROCESSED**  
 LORAIN COUNTY TAX MAP DEPARTMENT  
 226 MIDDLE AVE. ELYRIA, OH

SURVEYED BY: THOMAS A. SIMON	SURV # 51307
CLOSURE: 1: 586308	
MAP PAGE(S): 05-00-053	
APPROVED BY: AC	DATE: October 28, 2024
SCALE: 1 in = 100 ft	PRIOR INSTRUMENT: VOL 1154, PG 844