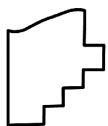
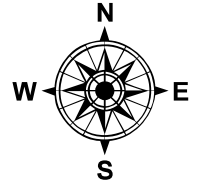
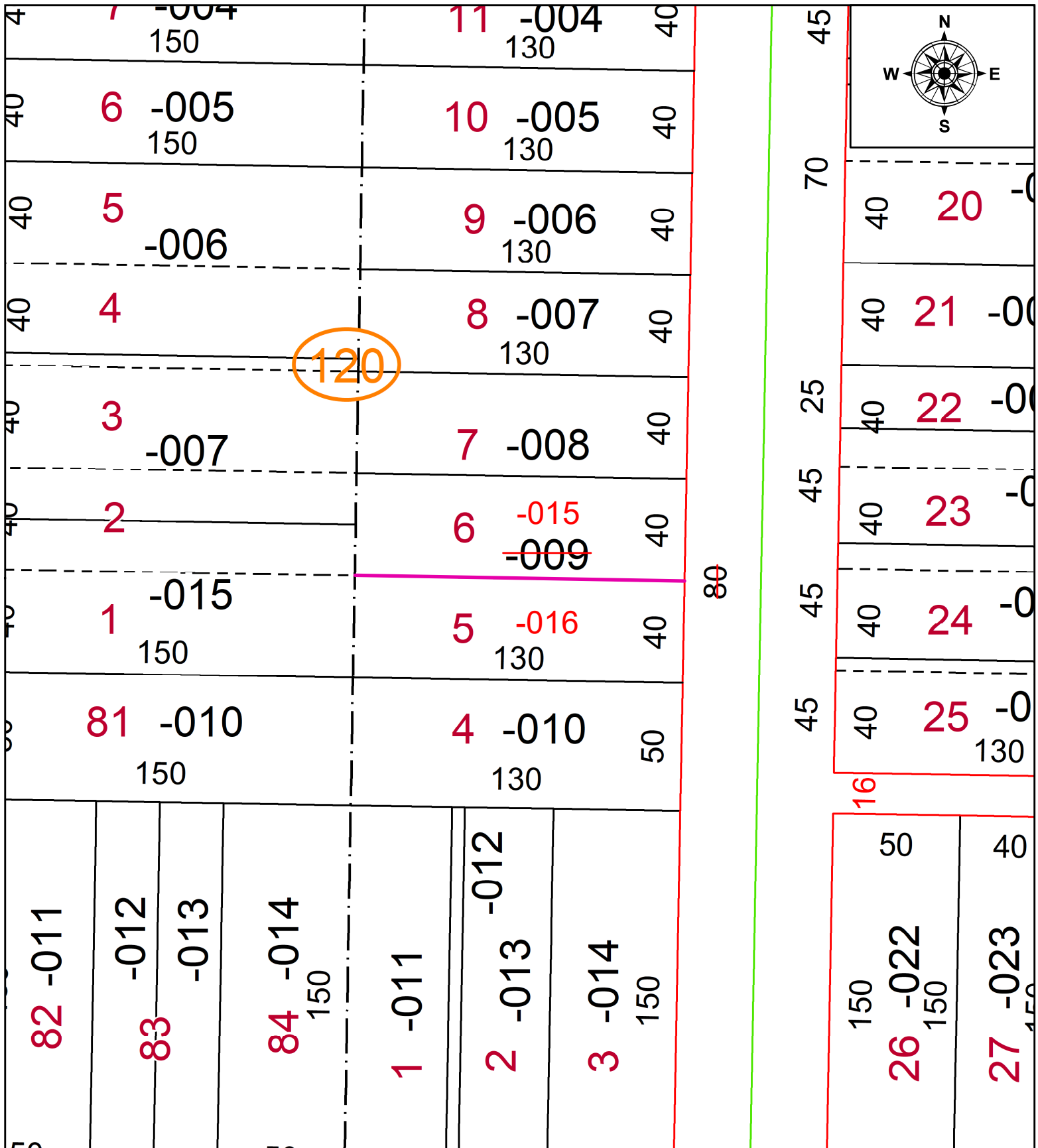


PARENT PARCEL: 03-00-056-120-009

CHILD PARCEL: 03-00-056-120-015 & -016

STARTING POINT: **AC CORR PER PRIOR DEED**

22-04920-U



SPLITS/DEEDS PROCESSED
 LORAIN COUNTY TAX MAP DEPARTMENT
 226 MIDDLE AVE. ELYRIA, OH

SURVEYED BY: _____ N/A
 CLOSURE: _____ N/A
 MAP PAGE(S): _____ 14-00-156
 APPROVED BY: _____ AC DATE: August 01, 2022
 SCALE: _____ 1" = 50' PRIOR INSTRUMENT: _____ 2012- 0402307