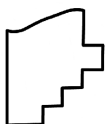
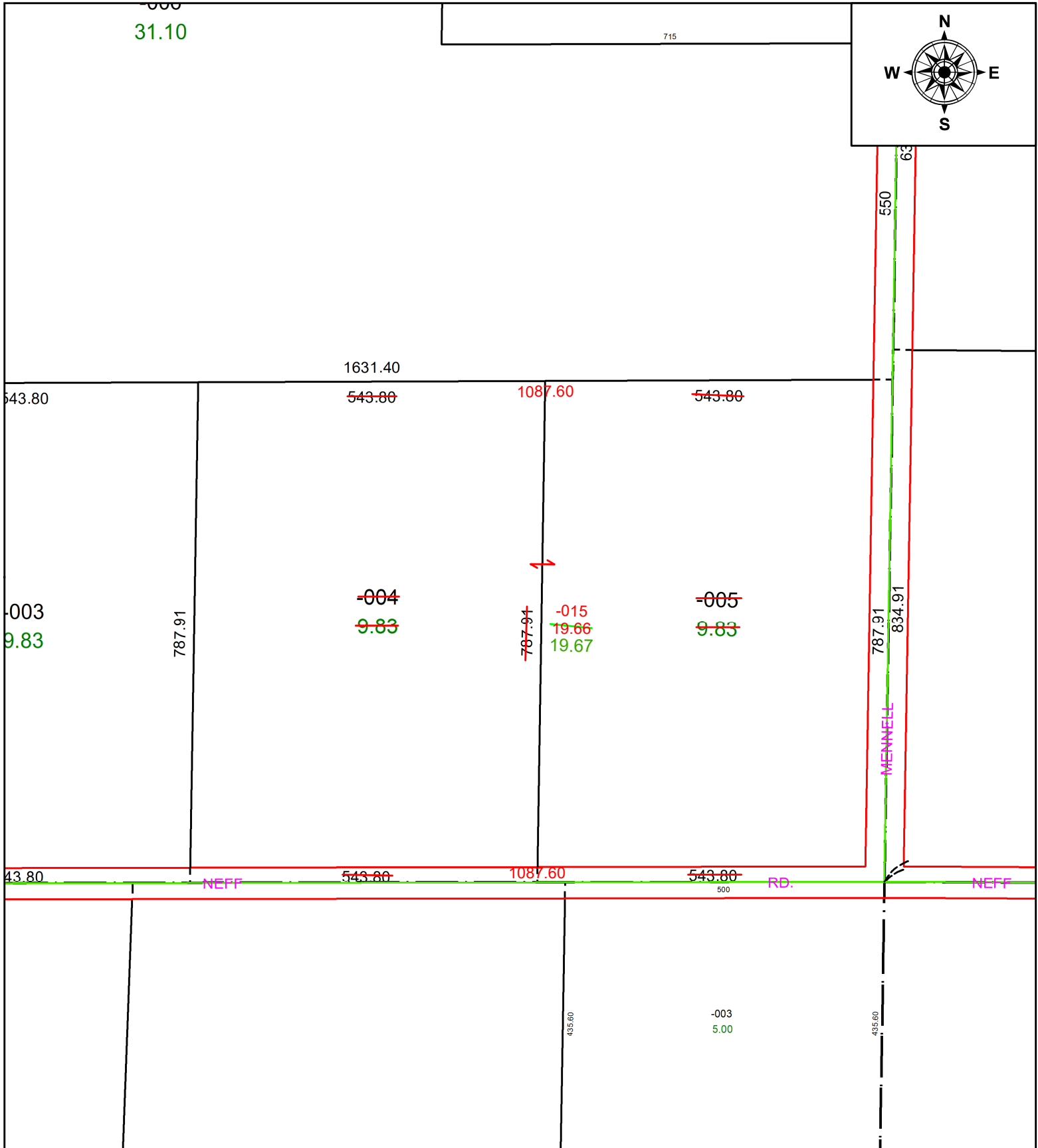


PARENT PARCEL: 16-00-083-000-004 & -005

CHILD PARCEL: 16-00-083-000-015

STARTING POINT: **AC CORR PER SURV BY LOUIS J. GIFFELS**

24-04918



SPLITS/DEEDS PROCESSED
 LORAIN COUNTY TAX MAP DEPARTMENT
 226 MIDDLE AVE. ELYRIA, OH

SURVEYED BY: LOUIS J. GIFFELS **SURV # 51290**

CLOSURE: 1: INF

MAP PAGE(S): 16-00-083

APPROVED BY: AC **DATE:** September 30, 2024

SCALE: 1 in = 200 ft **PRIOR INSTRUMENT:** 2021- 0841790