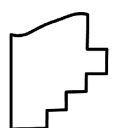
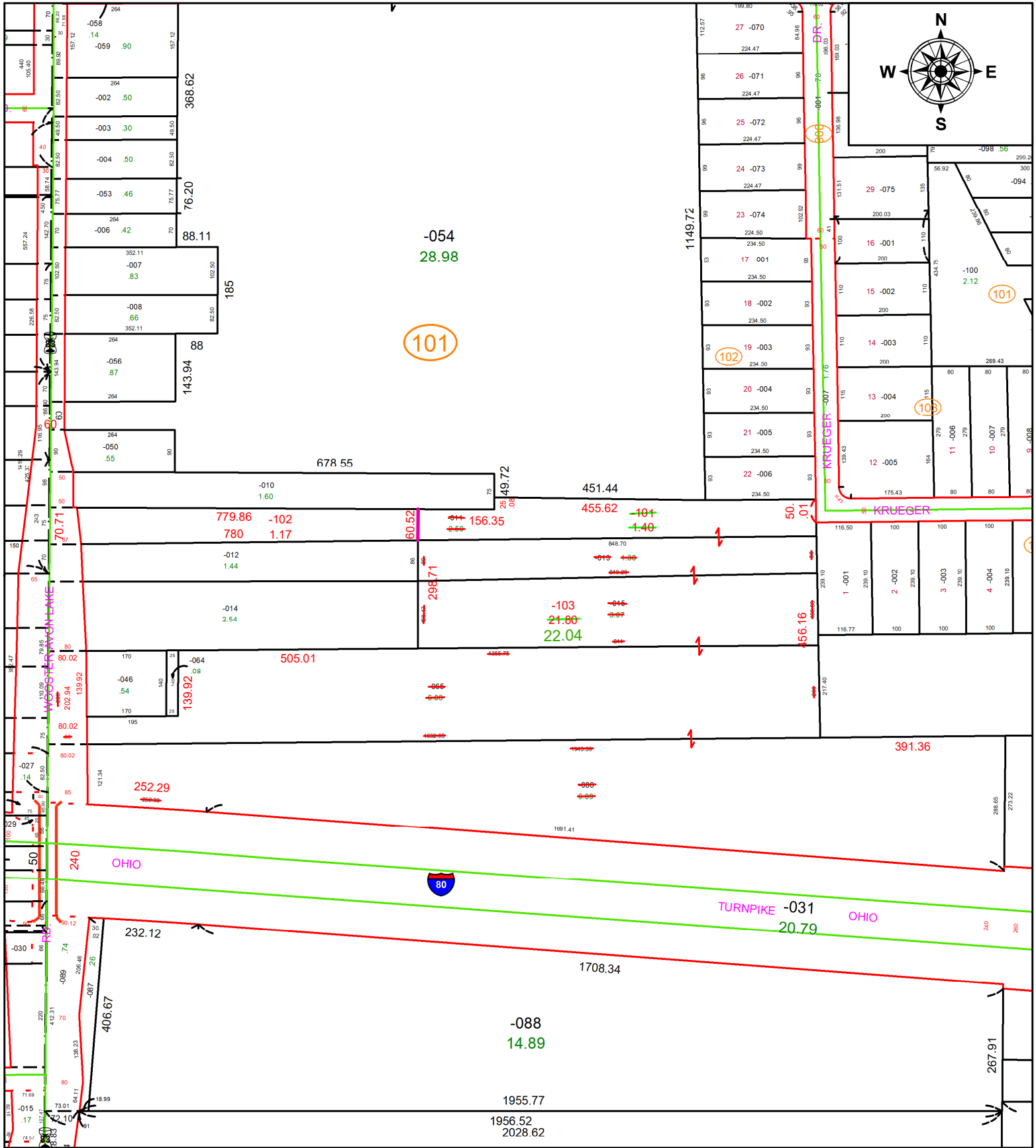


PARENT PARCEL: 07-00-022-101-011, -013, -015, -065, & -086

CHILD PARCEL: 07-00-022-101-101, -102, & -103

STARTING POINT: AC CORR PER SURV BY AMY M. KELLY

24-04916



**SPLITS/DEEDS PROCESSED**  
 LORAIN COUNTY TAX MAP DEPARTMENT  
 226 MIDDLE AVE. ELYRIA, OH

**SURVEYED BY:** AMY M. KELLY **SURV # 51288**  
**CLOSURE:** 1: 228253  
**MAP PAGE(S):** 07-00-022  
**APPROVED BY:** AC **DATE:** September 30, 2024  
**SCALE:** 1 in = 270 ft **PRIOR INSTRUMENT:** 2005- 0095487