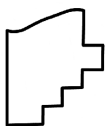
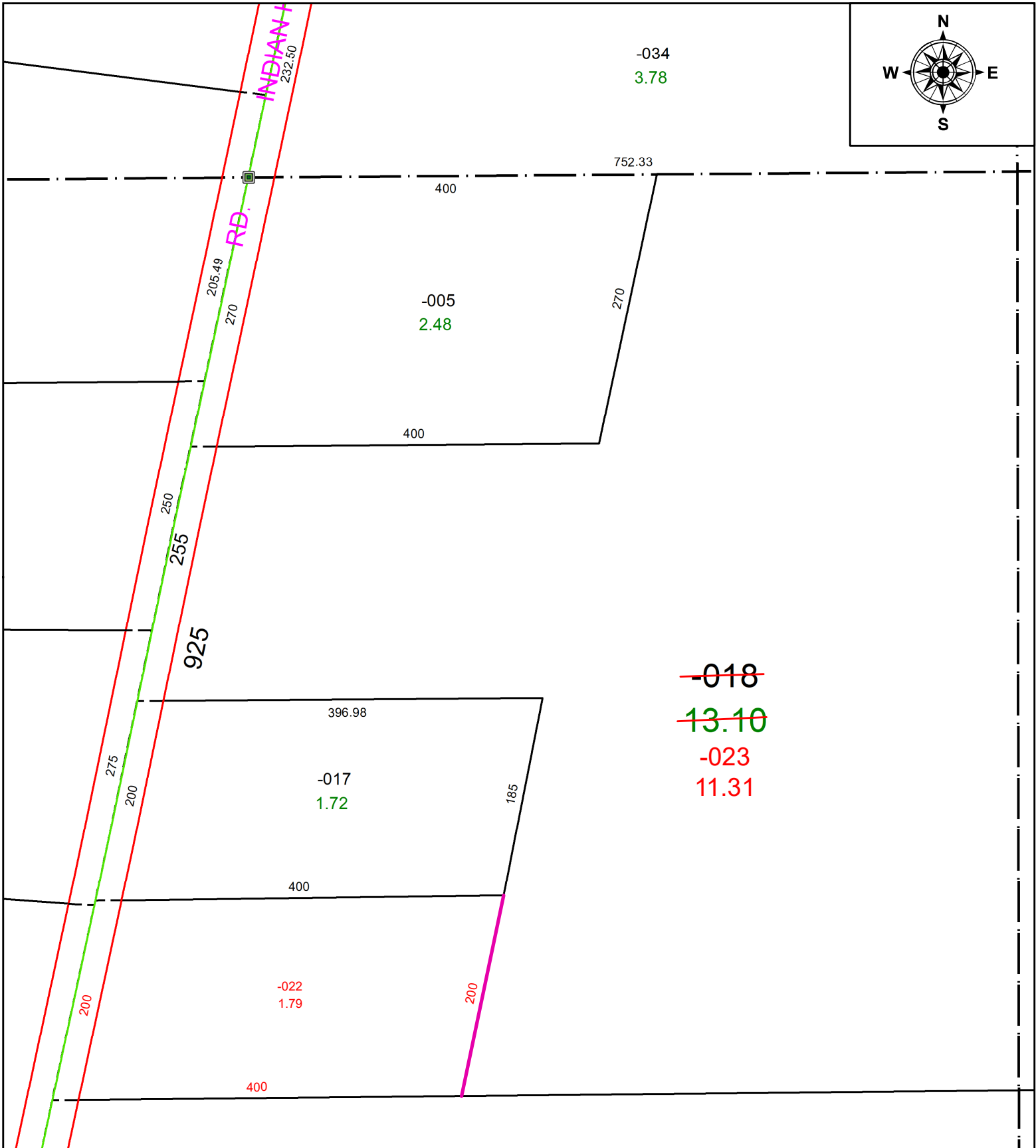


PARENT PARCEL: 15-00-088-000-018

CHILD PARCEL: 15-00-088-000-022 & -023

STARTING POINT: C/L OF INDIAN HOLLOW AND N LINE OF O/L 88

24-04915



SPLITS/DEEDS PROCESSED
 LORAIN COUNTY TAX MAP DEPARTMENT
 226 MIDDLE AVE. ELYRIA, OH

SURVEYED BY: DOJGLAS H. MOSLEY **SURV # 51283**
CLOSURE: 1: INF
MAP PAGE(S): 15-00-088
APPROVED BY: AC **DATE:** September 23, 2024
SCALE: 1 in = 125 ft **PRIOR INSTRUMENT:** 2022- 0863089