

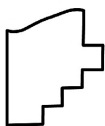
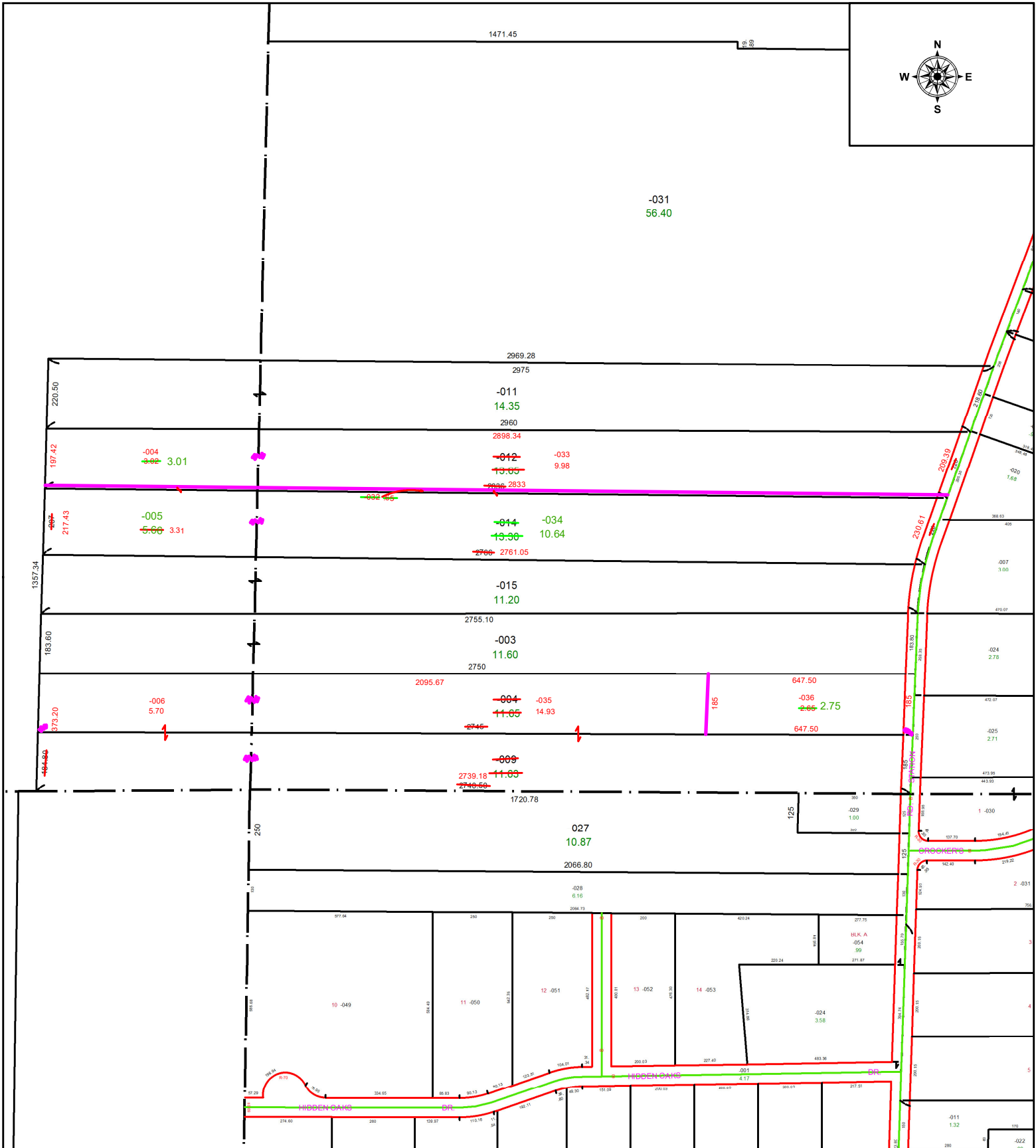
PARENT PARCEL: 12-00-089-000-004, -009, -012, & -014

AC CORR PER SURVEYOR ERIC MISANKO

CHILD PARCEL: 12-00-089-000-032 THRU -036 & 12-00-092-000-004, -005, & -006

24-04914

STARTING POINT: INTERSECTION OF C/L STATION RD & SOUTH LINE OF O.L. 89



SPLITS/DEEDS PROCESSED
LORAIN COUNTY TAX MAP DEPARTMENT
226 MIDDLE AVE. ELYRIA, OH

SURVEYED BY: ERIC MISANKO SURVEY # 51284
CLOSURE: 1: 1620718
MAP PAGE(S): 12-00-089 & 12-00-092
APPROVED BY: WRZ DATE: 9/23/2024
SCALE: 1" = 400 PRIOR INSTRUMENT: DV 1115 PG 527