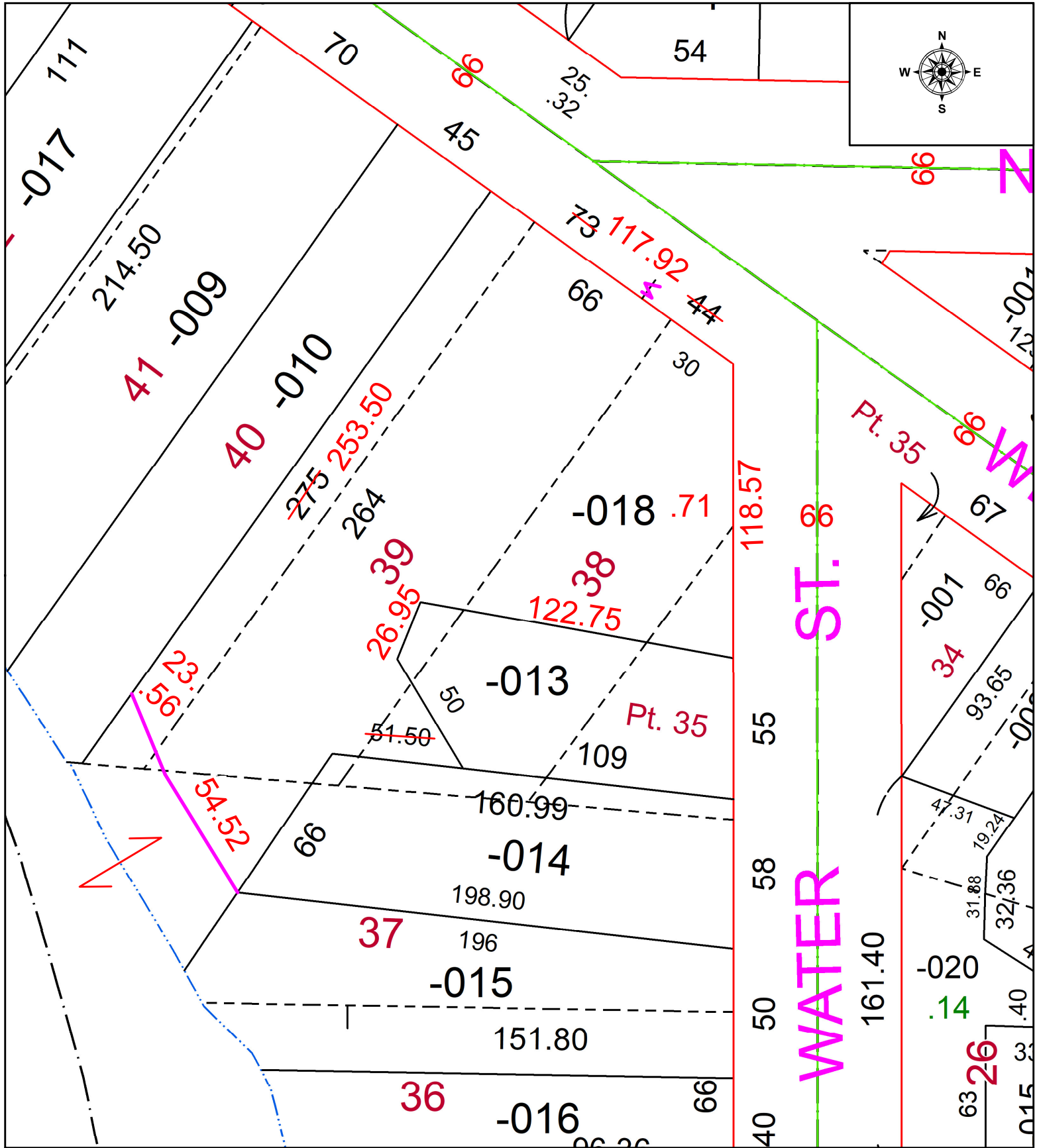


PARENT PARCEL: 06-26-069-000-018

CHILD PARCEL: N/A FRONTAGE & DEPTH TO ACREAGE CORRECTION PER THOMAS SIMON

22-04911-C

STARTING POINT: INTERSECTION OF C/LS OF WEST BRIDGE ST & WATER ST



**SPLITS/DEEDS PROCESSED**  
 LORAIN COUNTY TAX MAP DEPARTMENT  
 226 MIDDLE AVE. ELYRIA, OH

SURVEYED BY:	THOMAS SIMON	SURVEY #	50647
CLOSURE:	1:115063		
MAP PAGE(S):	06-26-069		
APPROVED BY:	WRZ	DATE:	7/26/2022
SCALE:	1" = 75'	PRIOR INSTRUMENT:	2017-0656032