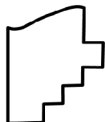
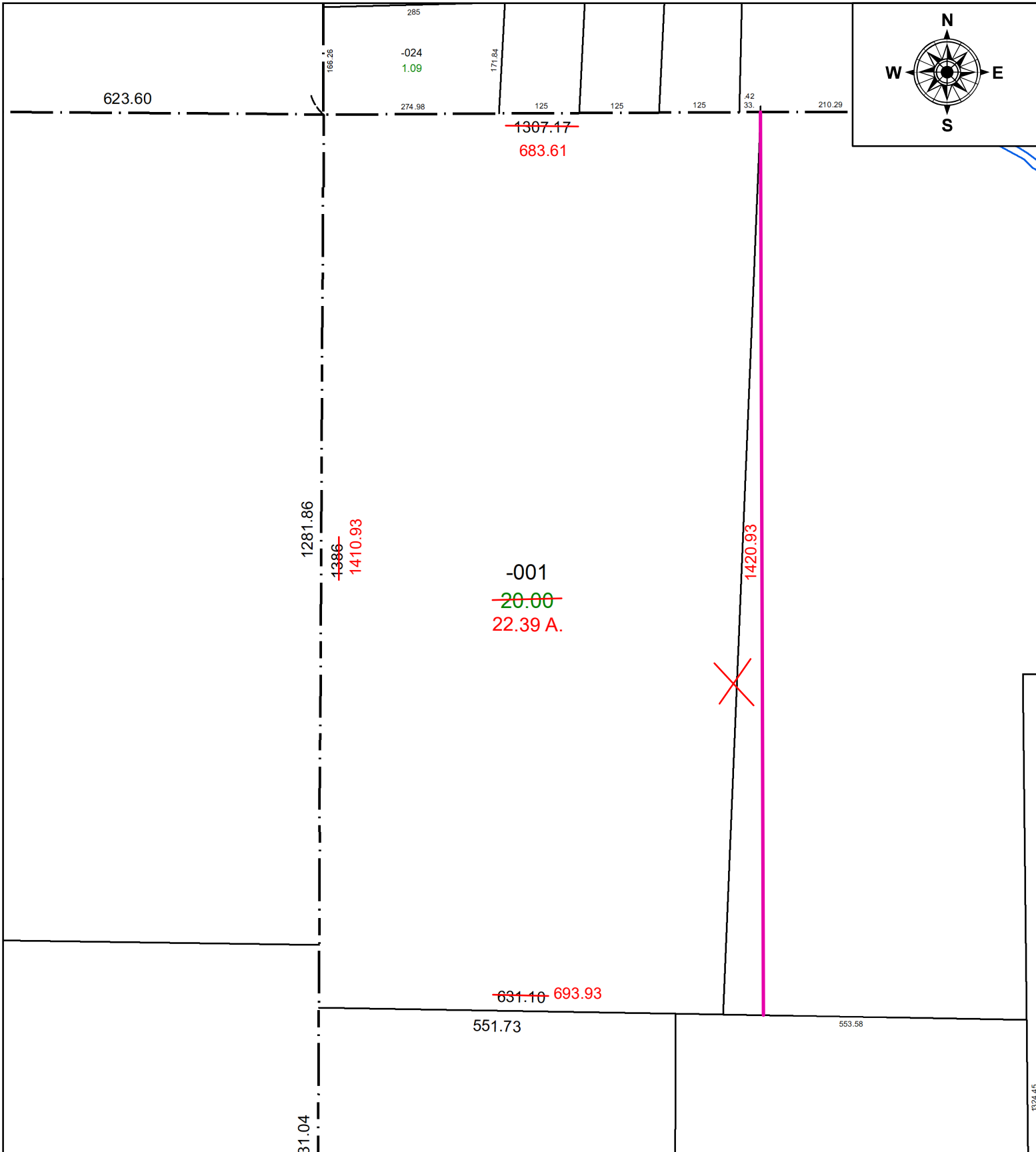


PARENT PARCEL: 11-00-066-000-001

CHILD PARCEL: **ACREAGE CORR. FROM 20.00 A. TO 22.39 A. PER SURV. S. METCALF**

STARTING POINT: CL OF GILES RD. & N.W. CORNER OF O.L. 66

22-04909-C



SPLITS/DEEDS PROCESSED
 LORAIN COUNTY TAX MAP DEPARTMENT
 226 MIDDLE AVE. ELYRIA, OH

SURVEYED BY: STEVE METCALF
 CLOSURE: 1:1049830
 MAP PAGE(S): 11-00-066
 APPROVED BY: TJS DATE: 7/26/2022
 SCALE: 1" = 200 PRIOR INSTRUMENT: OR. 360/613