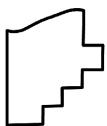
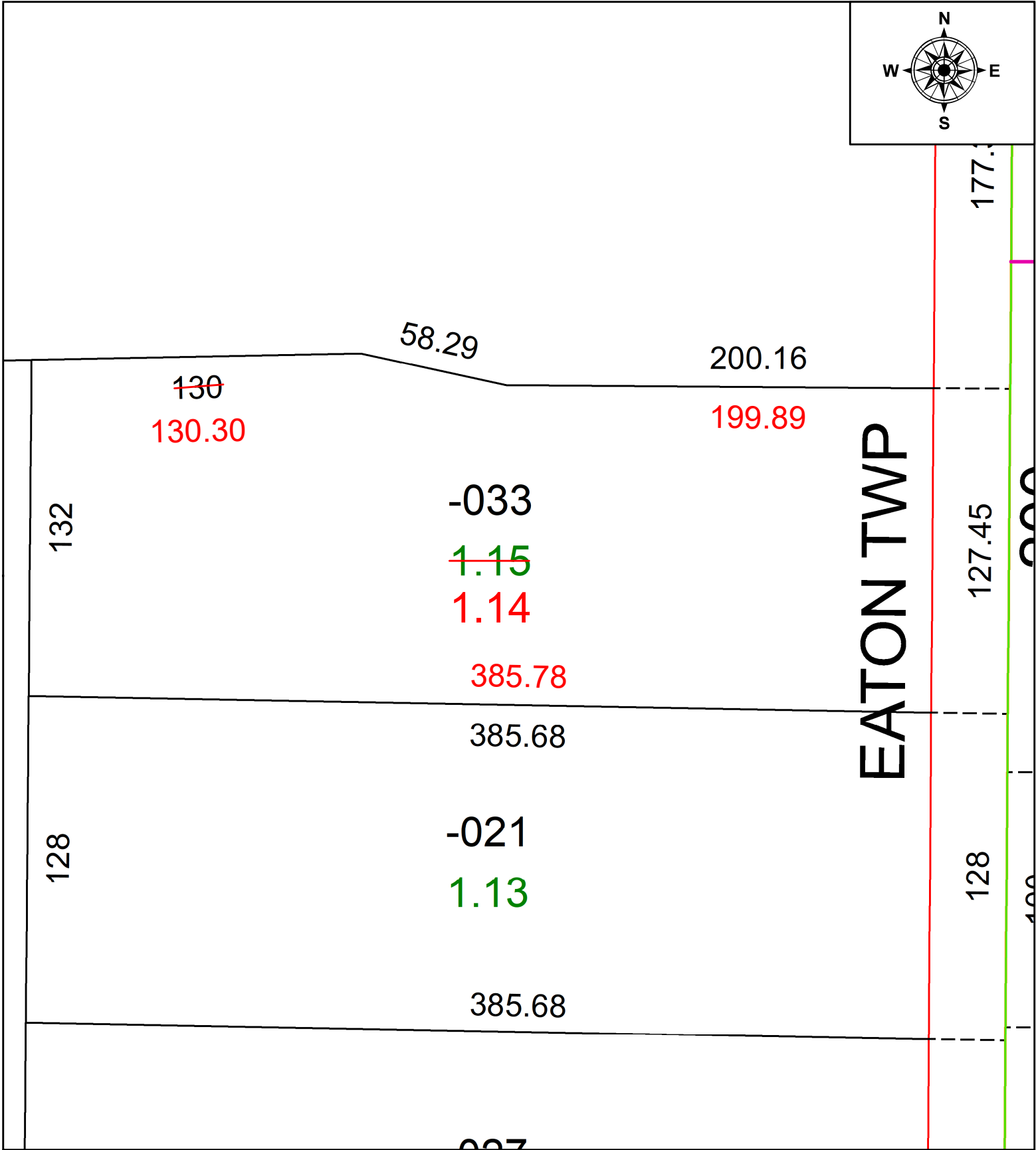


PARENT PARCEL: 11-00-006-000-033

CHILD PARCEL: **AC CORR PER SURV BY MATTHEW A. HILDEBRANDT**

STARTING POINT: C/L HAWKE AND SR 82

22-04905-D



SPLITS/DEEDS PROCESSED
 LORAIN COUNTY TAX MAP DEPARTMENT
 226 MIDDLE AVE. ELYRIA, OH

SURVEYED BY: MATTHEW A. HILDEBRANDT

CLOSURE: 1: 200302

MAP PAGE(S): 11-00-006-B

APPROVED BY: AC DATE: July 20, 2022

SCALE: 1" = 50 PRIOR INSTRUMENT: 2022- 0869955