

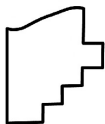
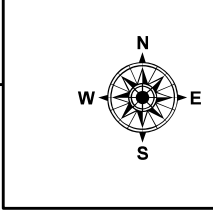
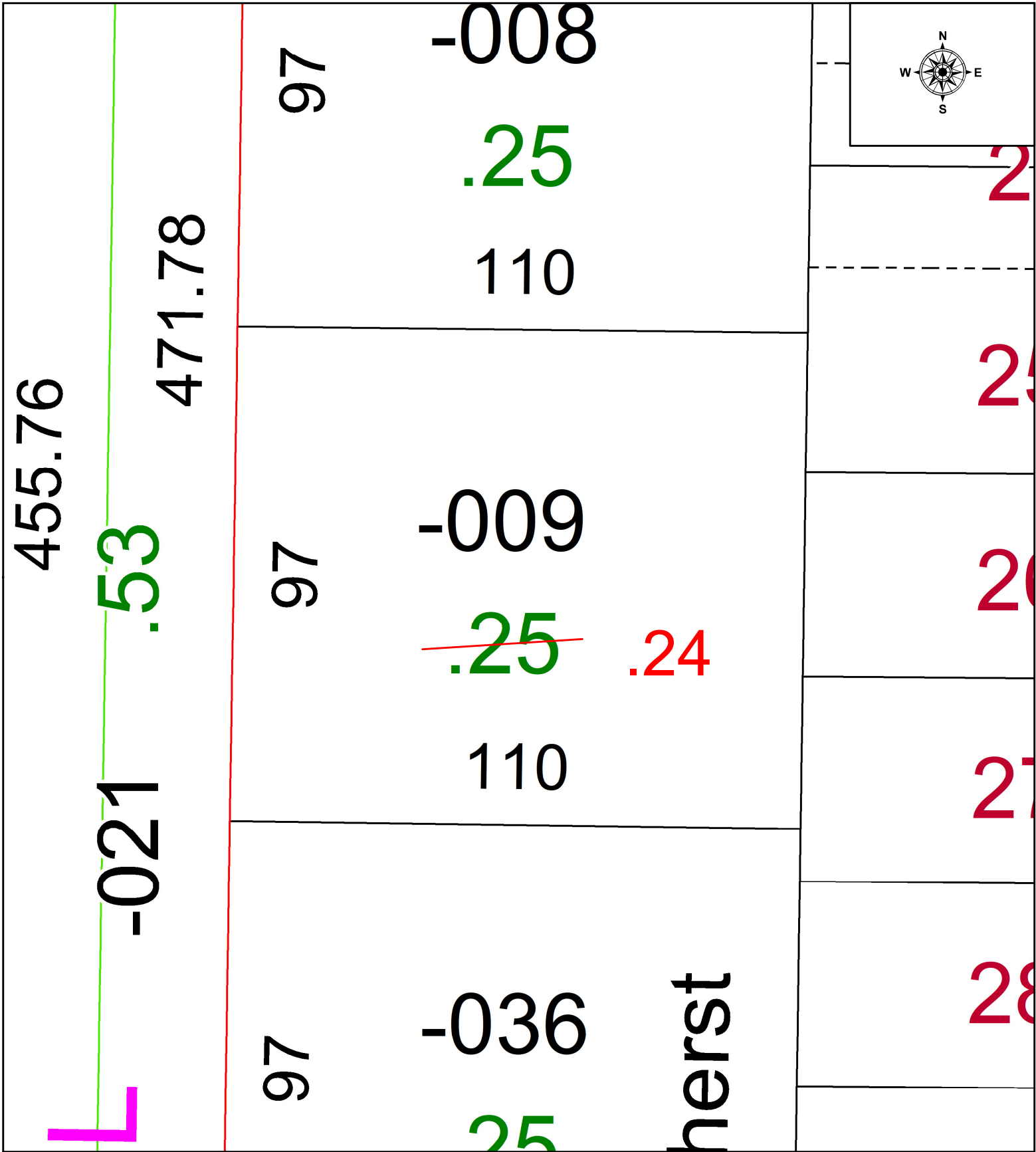
PARENT PARCEL: 05-00-037-108-009

CHILD PARCEL: N/A

ACREAGE CORRECTION PER PRIOR DEED #2004-0034420

22-04904-C

STARTING POINT: N/A



SPLITS/DEEDS PROCESSED
 LORAIN COUNTY TAX MAP DEPARTMENT
 226 MIDDLE AVE. ELYRIA, OH

SURVEYED BY: G.E. PENFOUND SURVEY # N/A
 CLOSURE: N/A
 MAP PAGE(S): 05-00-037
 APPROVED BY: WRZ DATE: 7/18/2022
 SCALE: 1" = 25 PRIOR INSTRUMENT: 2004-0034420