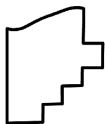
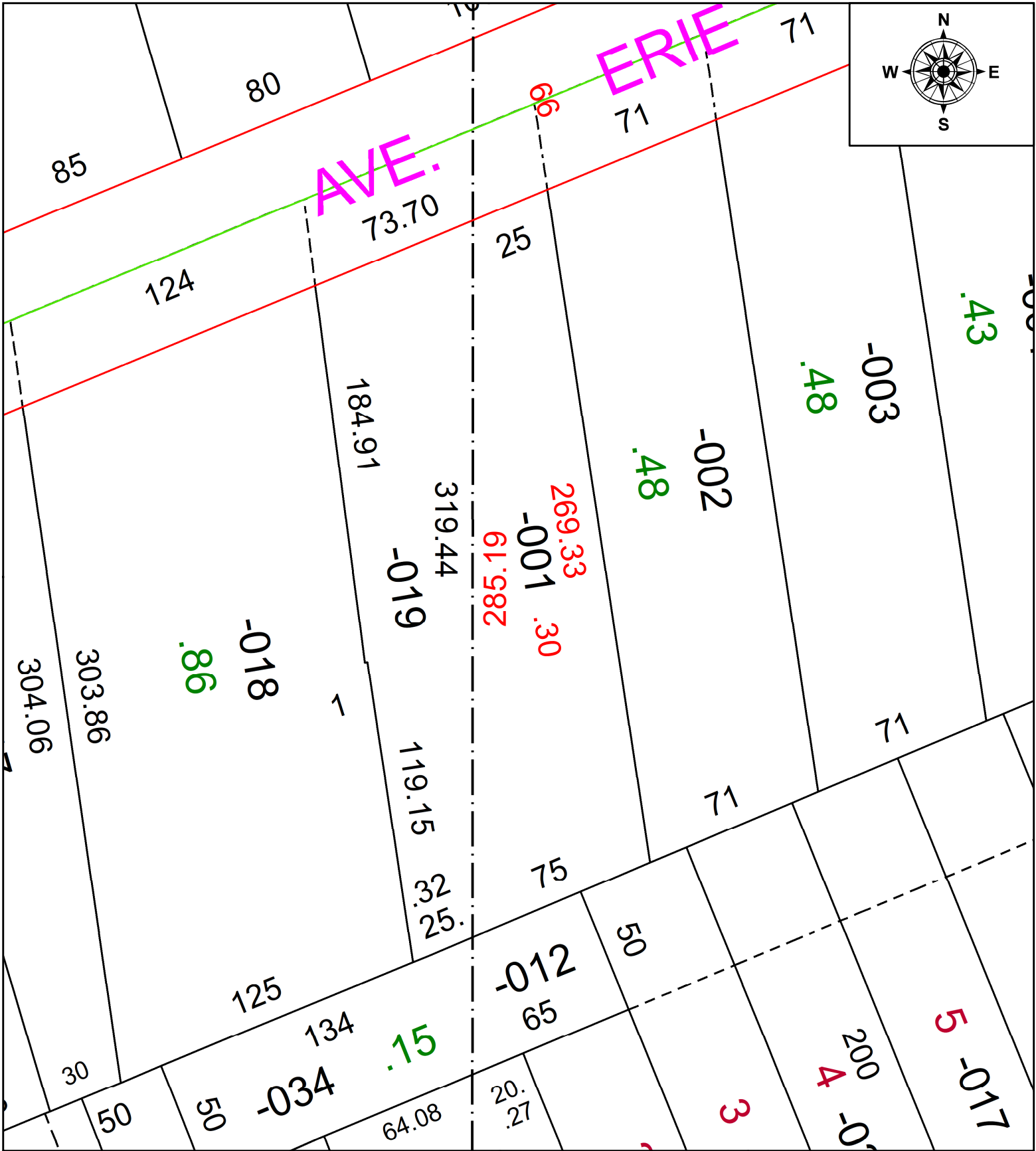


PARENT PARCEL: 03-00-047-102-001

CHILD PARCEL: **FRONTAGE & DEPTH TO AC CORR PER SURV BY WILLIAM R. WALLACE**

22-04900-D

STARTING POINT: C/L OF NABRASKA AND E ERIE AVE



**SPLITS/DEEDS PROCESSED**  
 LORAIN COUNTY TAX MAP DEPARTMENT  
 226 MIDDLE AVE. ELYRIA, OH

SURVEYED BY: WILLIAM R. WALLACE  
 CLOSURE: 1: 11555  
 MAP PAGE(S): 03-00-048  
 APPROVED BY: AC DATE: July 12, 2022  
 SCALE: 1" = 50 PRIOR INSTRUMENT: 2015- 0557342