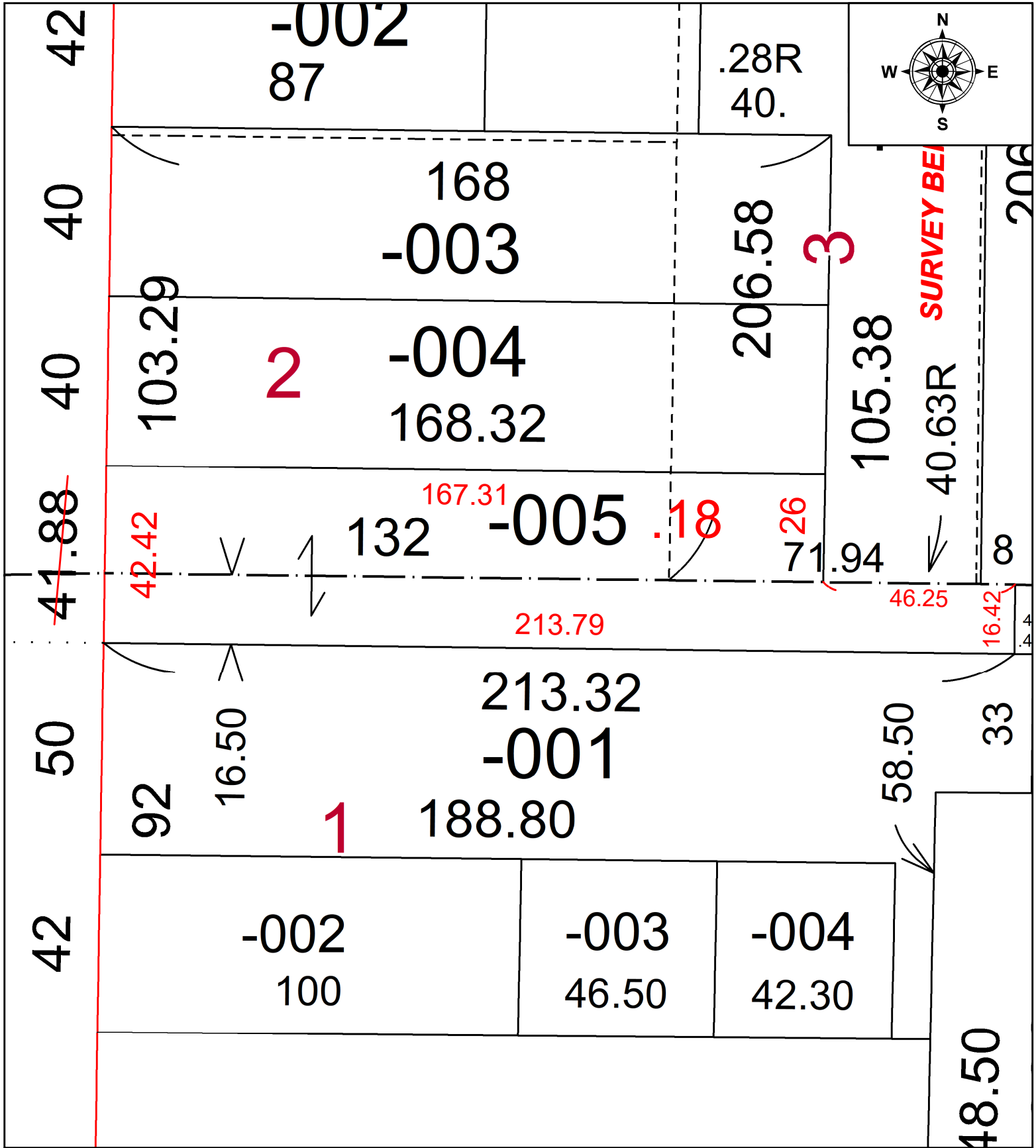


PARENT PARCEL: 06-26-035-000-005

CHILD PARCEL: **FR. & DEPTH TO AC. CORR. PER SURVEY THOMAS SIMON**

22-04898-C

STARTING POINT: N.W. CORNER S/L 1 ROOD'S ADDITION P.V. 1 PG. 13



SPLITS/DEEDS PROCESSED
LORAIN COUNTY TAX MAP DEPARTMENT
226 MIDDLE AVE. ELYRIA, OH

SURVEYED BY:	THOMAS SIMON
CLOSURE:	1:114902
MAP PAGE(S):	06-26-035
APPROVED BY:	DMA DATE: 7/11/2022
SCALE:	1" = 30'
PRIOR INSTRUMENT:	1993-0224758