

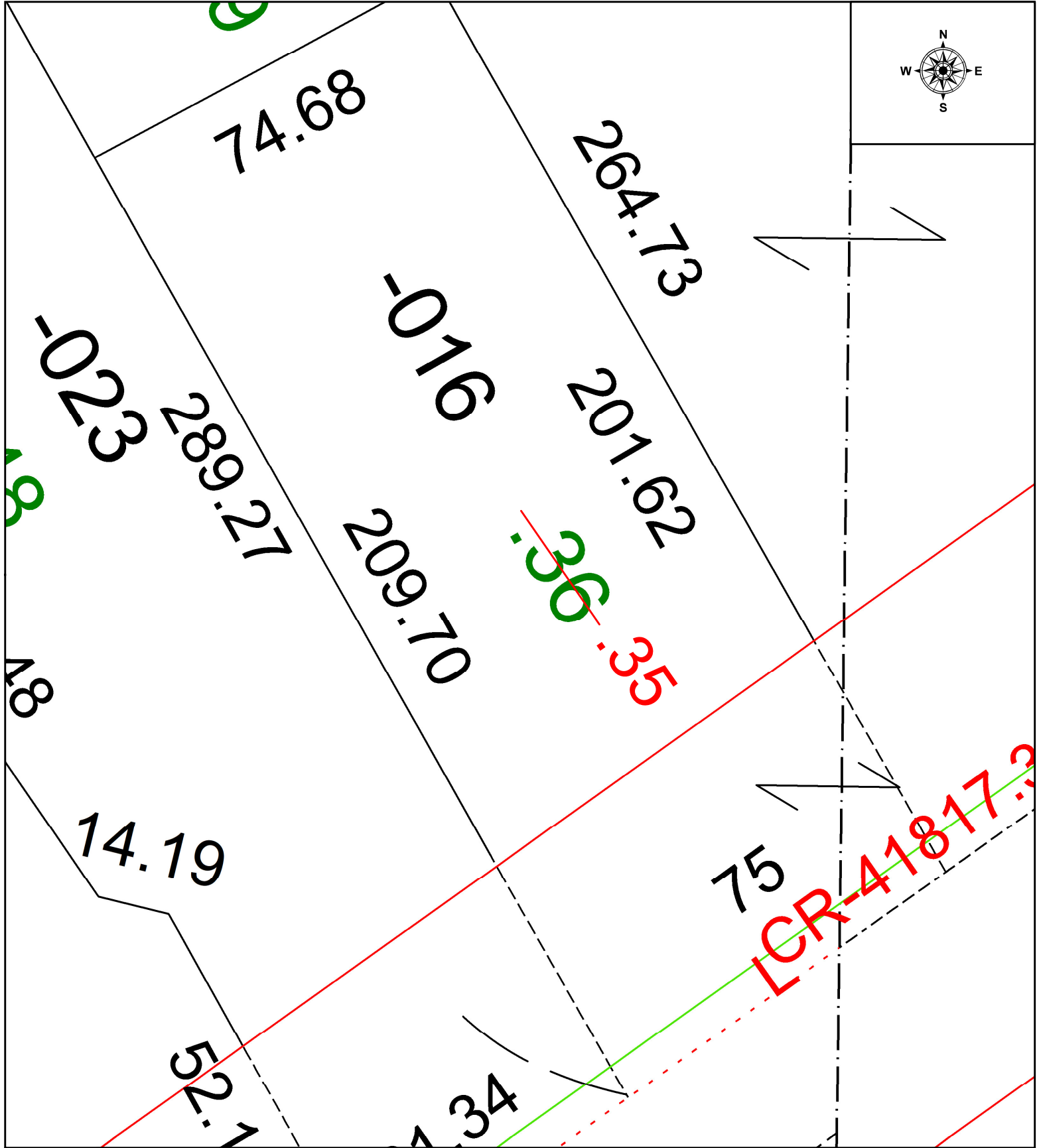
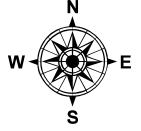
PARENT PARCEL: 02-02-022-101-016

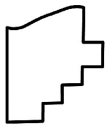
CHILD PARCEL: N/A

ACREAGE CORRECTION PER DEED

22-04897-A

STARTING POINT: N/A



 **SPLITS/DEEDS PROCESSED**  
 LORAIN COUNTY TAX MAP DEPARTMENT  
 226 MIDDLE AVE. ELYRIA, OH

SURVEYED BY: N/A SURVEY # N/A  
 CLOSURE: N/A  
 MAP PAGE(S): 02-02-022  
 APPROVED BY: WRZ DATE: 7/8/2022  
 SCALE: 1" = 25' PRIOR INSTRUMENT: 2021-0807717