

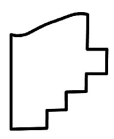
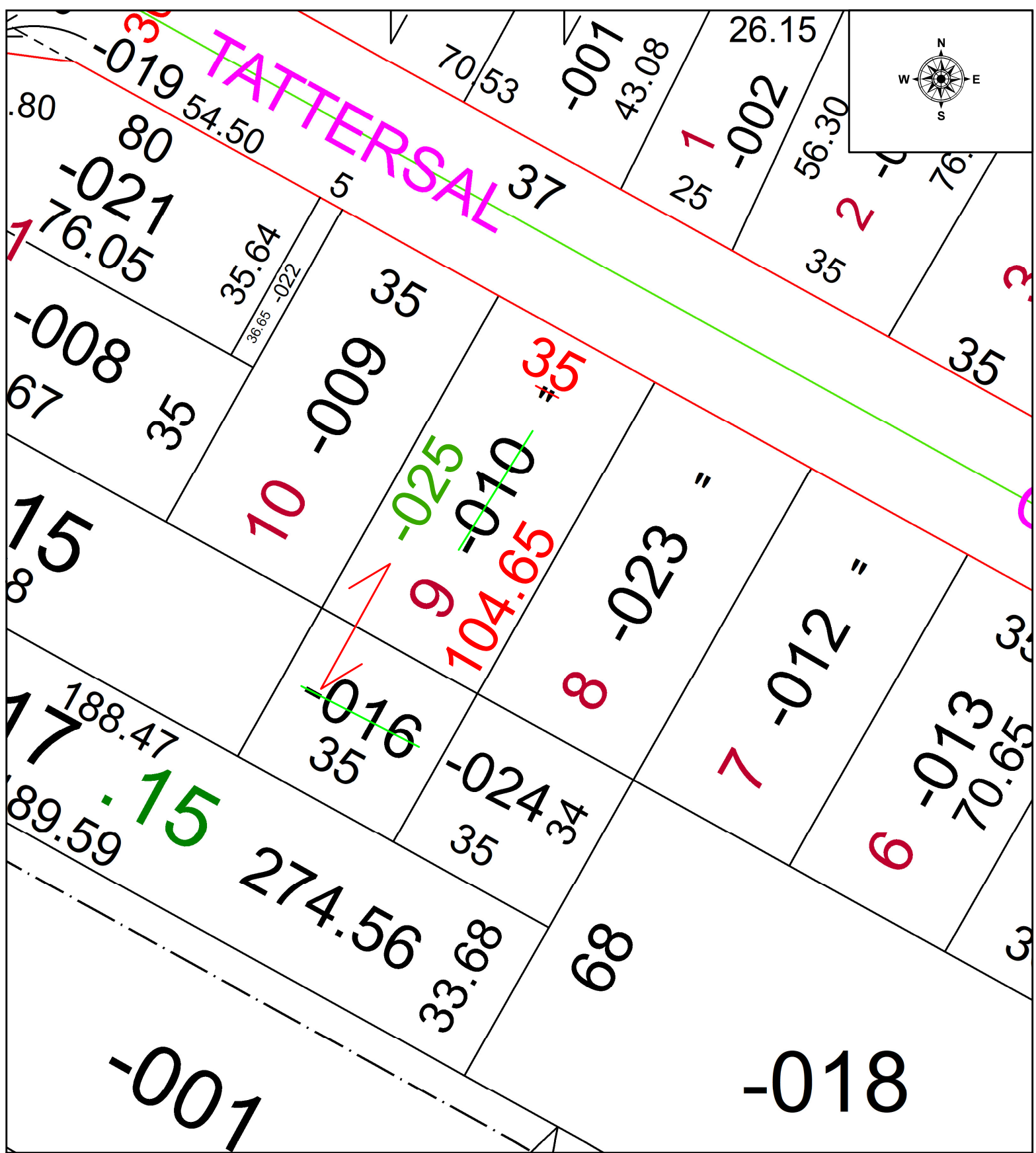
PARENT PARCEL: 06-24-123-000-010 & -016

CHILD PARCEL: 06-24-123-000-025

COMBINATION PER PRIOR DEED

22-04887-C

STARTING POINT: N/A



SPLITS/DEEDS PROCESSED
 LORAIN COUNTY TAX MAP DEPARTMENT
 226 MIDDLE AVE. ELYRIA, OH

SURVEYED BY:	N/A	SURVEY #	N/A
CLOSURE:	N/A		
MAP PAGE(S):	06-24-123		
APPROVED BY:	WRZ	DATE:	6/29/2022
SCALE:	1" = 25'	PRIOR INSTRUMENT:	2022-0876543