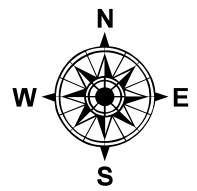
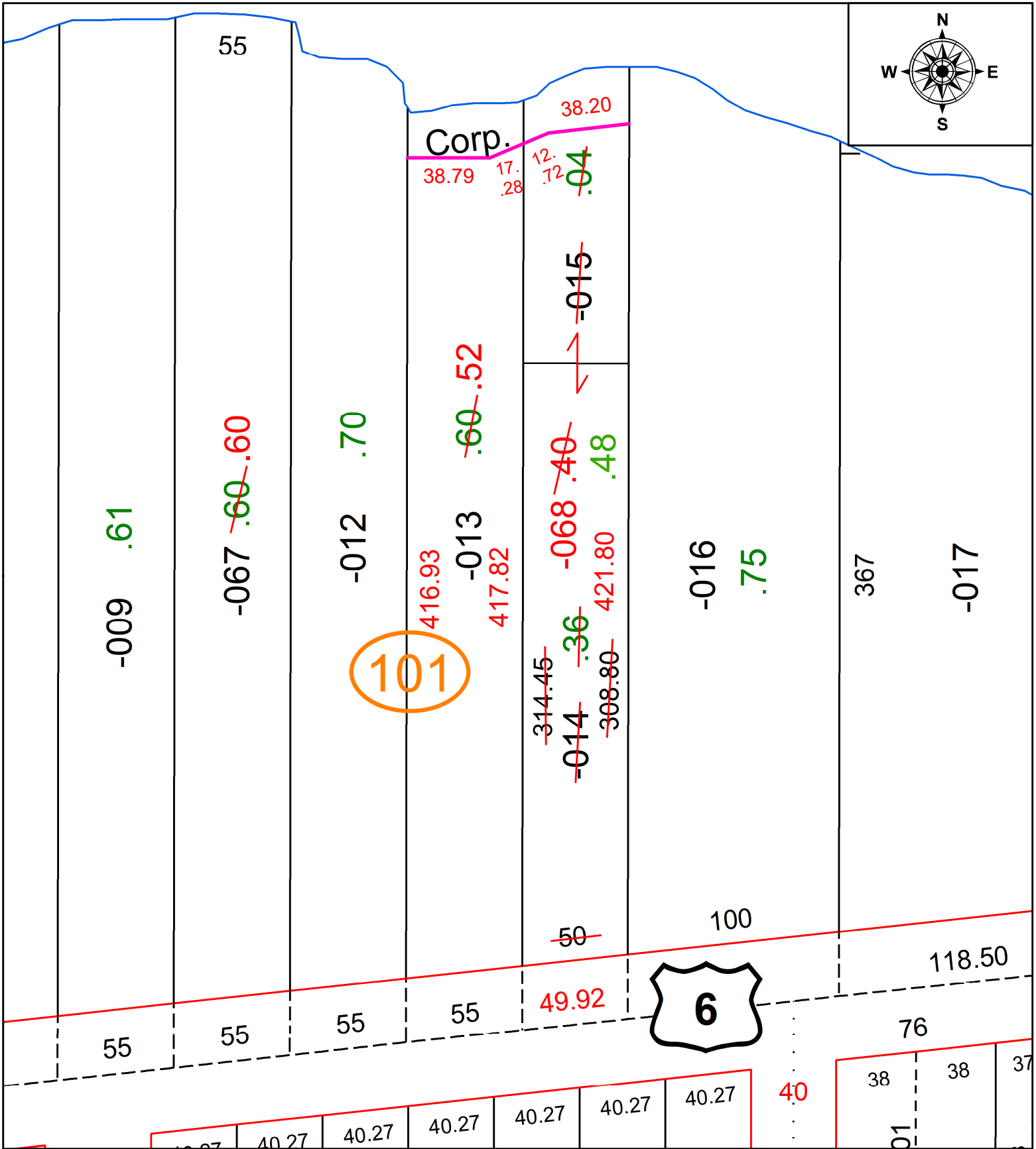


PARENT PARCEL: 04-00-019-101-013, -014 & -015

CHILD PARCEL: 04-00-019-101-068 AND AC. CORR. FOR 04-00-019-101-013

STARTING POINT: CL OF LAKE RD. & WESTERLY LINE SECTION 19

22-04883-C



SPLITS/DEEDS PROCESSED
 LORAIN COUNTY TAX MAP DEPARTMENT
 226 MIDDLE AVE. ELYRIA, OH

SURVEYED BY: KYLE DANALS
 CLOSURE: 1: 91141
 MAP PAGE(S): 04-00-019
 APPROVED BY: DMA DATE: 6/15/2022
 SCALE: 1" = 60' PRIOR INSTRUMENT: O.R. 363 PG. 741