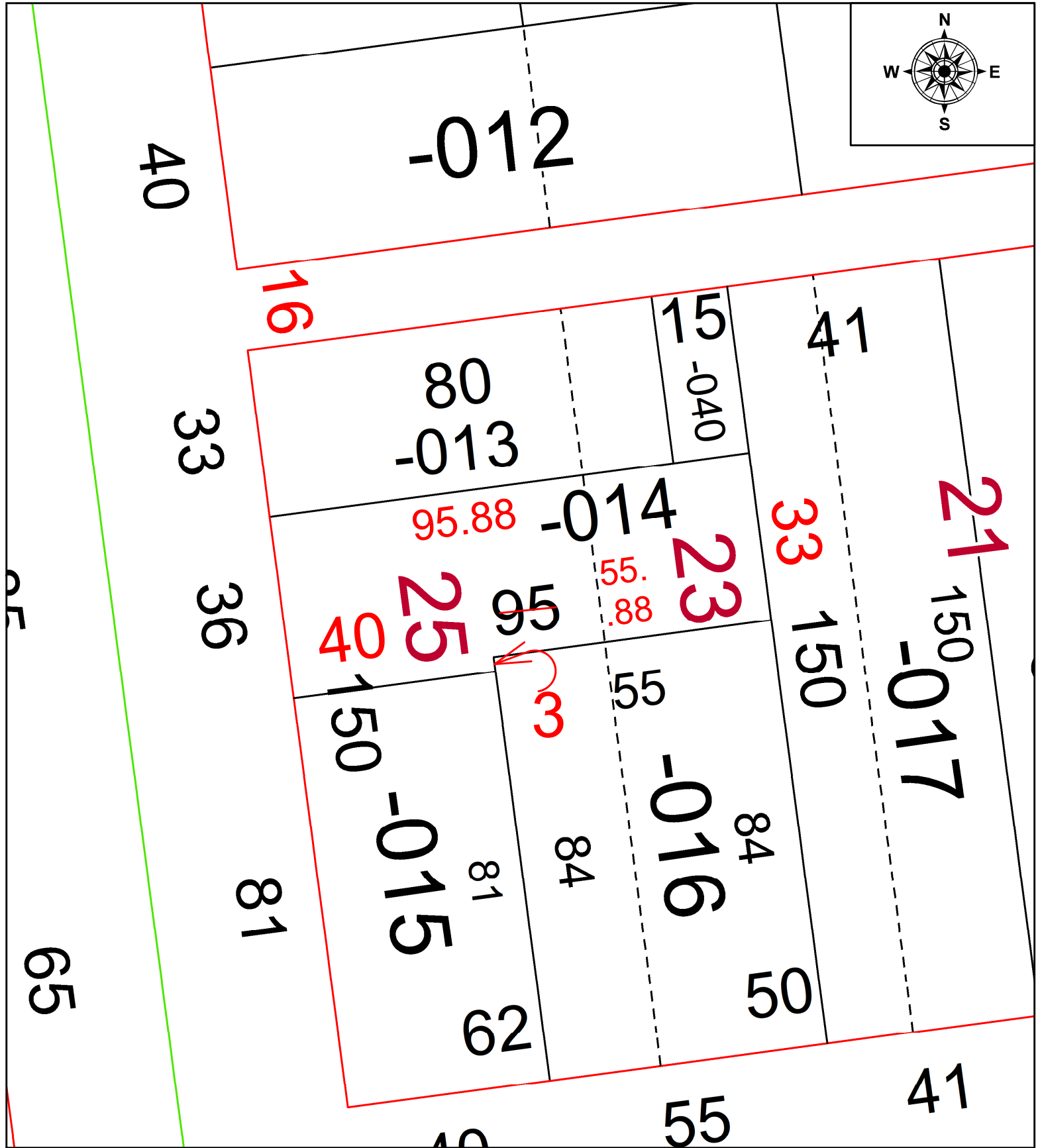


PARENT PARCEL: 02-01-003-173-014

CHILD PARCEL: **DEPTH CORR PER SURV BY JAMES P. YURKSCHATT**

22-04875-C

STARTING POINT: SW CORNER OF S/L 25



SPLITS/DEEDS PROCESSED
LORAIN COUNTY TAX MAP DEPARTMENT
226 MIDDLE AVE. ELYRIA, OH

SURVEYED BY: JAMES P. YURKSCHATT

CLOSURE: 1: 2147483648

MAP PAGE(S): 02-01-003

APPROVED BY: AC DATE: 6/7/2022

SCALE: 1" = 25' PRIOR INSTRUMENT: 2021- 0812997