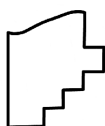
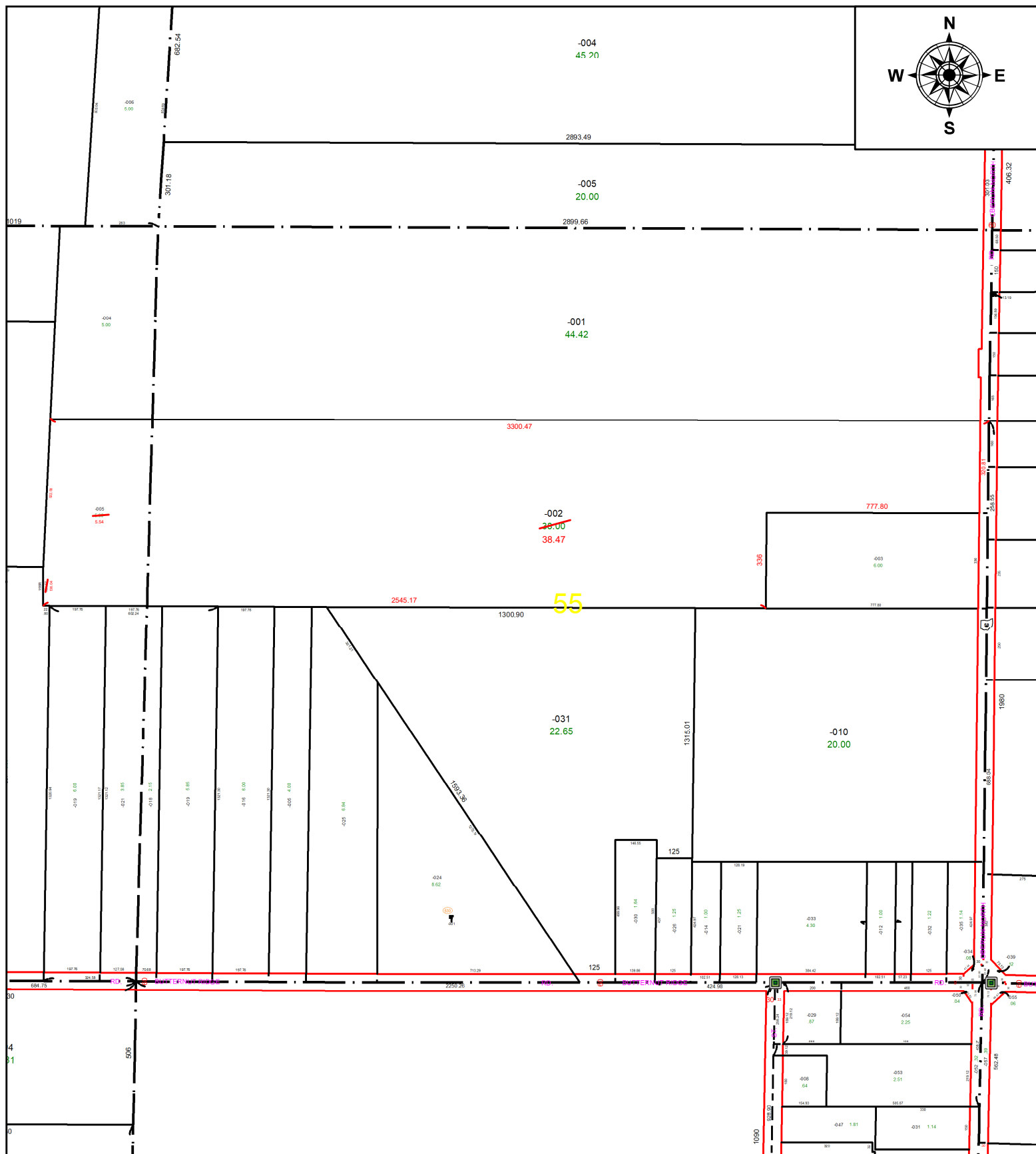
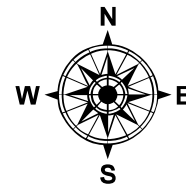


PARENT PARCEL: 09-00-054-000-005 & 09-00-055-000-002

CHILD PARCEL: **AC. CORR. PER SURVEY THOMAS SIMON**

STARTING POINT: CL OF BUTTERNUT RIDGE AND S.R. 58

22-04874-C



SPLITS/DEEDS PROCESSED
LORAIN COUNTY TAX MAP DEPARTMENT
226 MIDDLE AVE. ELYRIA, OH

SURVEYED BY: THOMAS SIMON
CLOSURE: 1: 364343
MAP PAGE(S): 09-00-054 & -055
APPROVED BY: DMA DATE: 6/3/2022
SCALE: 1" = 200' PRIOR INSTRUMENT: 2012-0410581