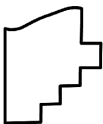
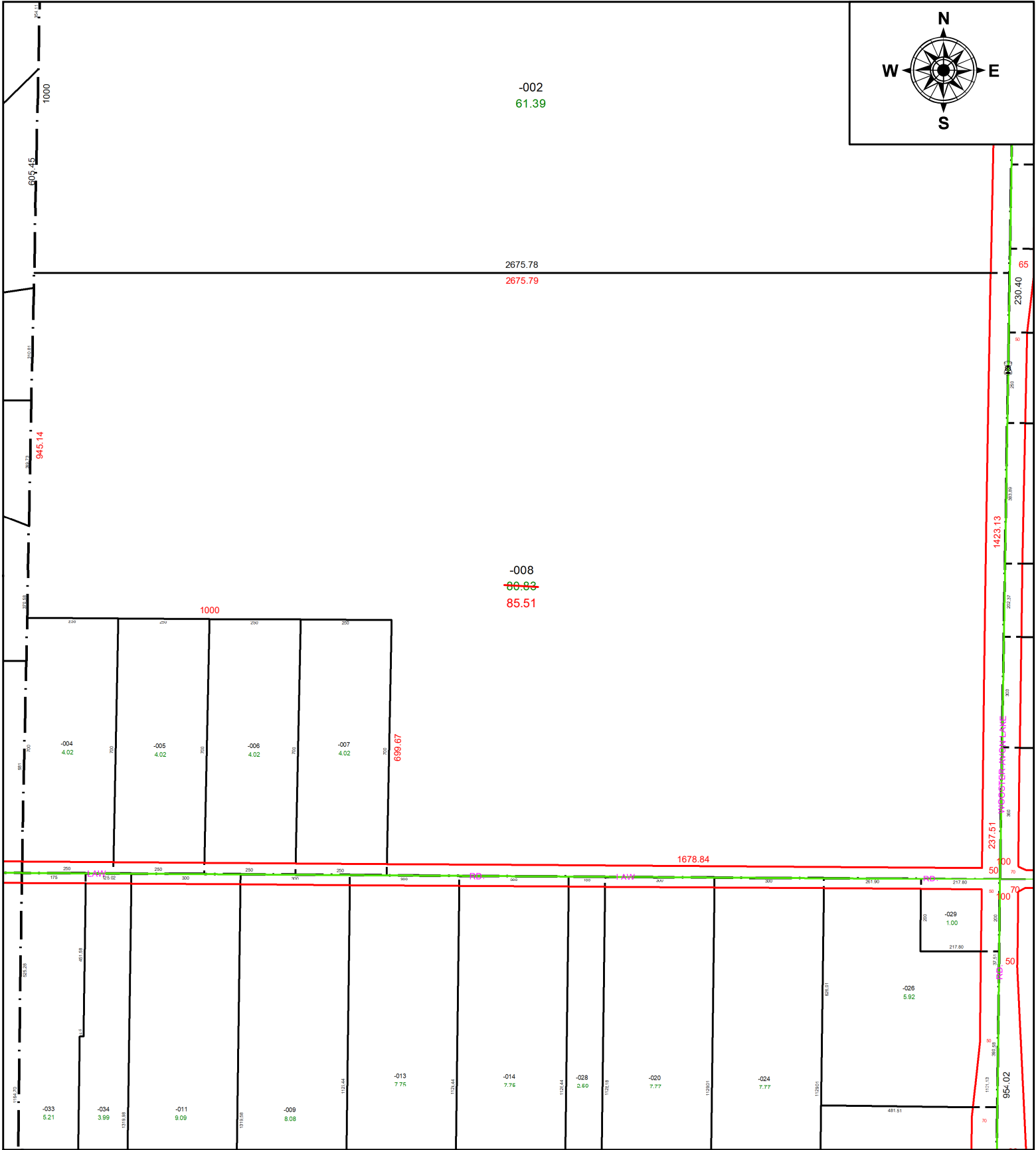
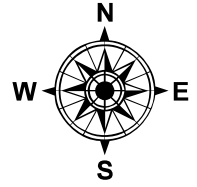


PARENT PARCEL: 16-00-065-000-008

CHILD PARCEL: **AC CORR PER SURV BY TIMOTHY D. HOZALSKI**

STARTING POINT: C/L OF LAW RD AND ST 83

22-04870-C



SPLITS/DEEDS PROCESSED
LORAIN COUNTY TAX MAP DEPARTMENT
226 MIDDLE AVE. ELYRIA, OH

SURVEYED BY: TIMOTHY D. HOZALSKI

CLOSURE: 1: 593818

MAP PAGE(S): 16-00-065-A,B

APPROVED BY: AC **DATE:** 5/25/2022

SCALE: 1" = 350 **PRIOR INSTRUMENT:** 2006- 0165047