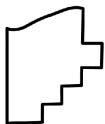
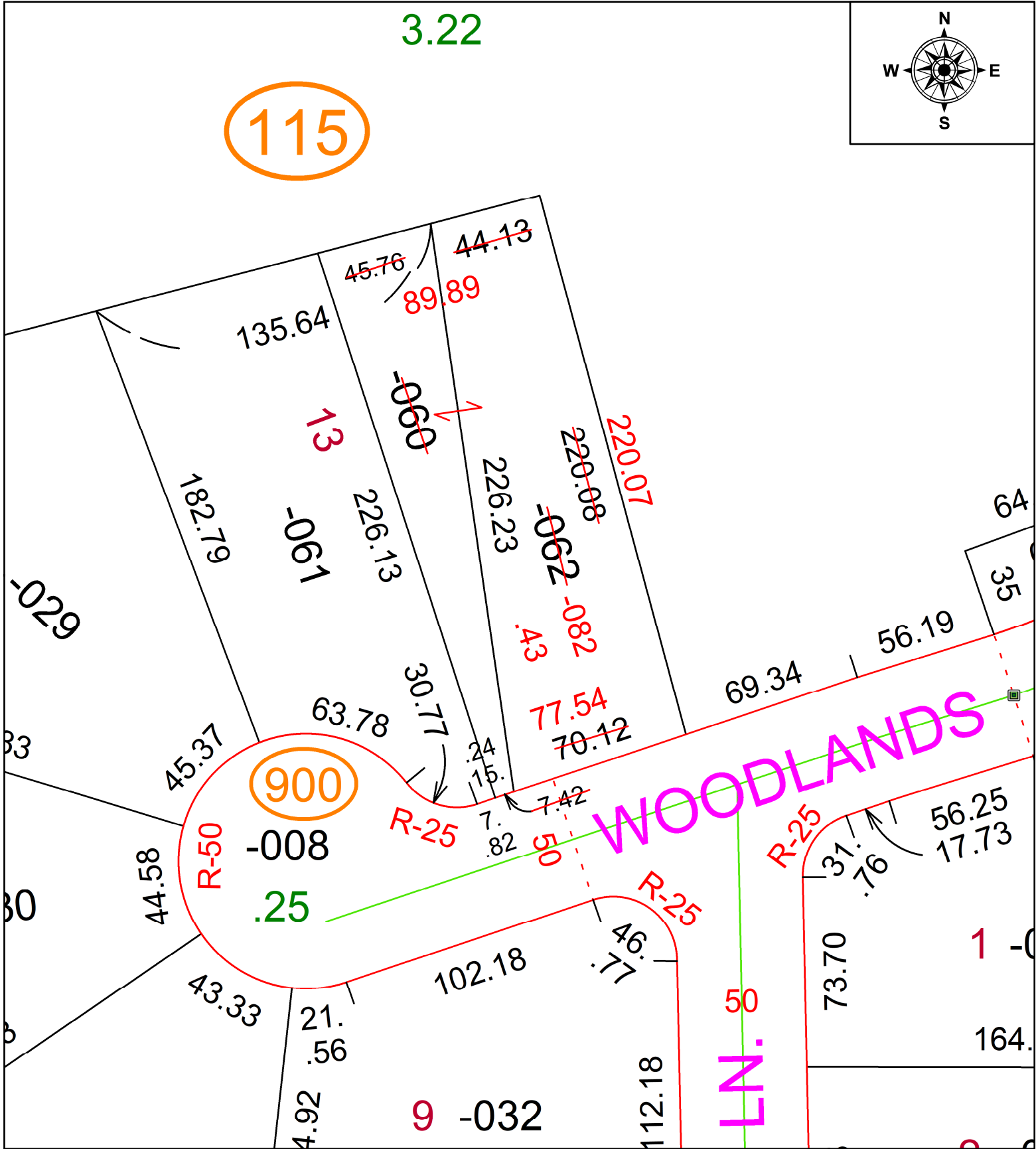


PARENT PARCEL: 01-00-002-115-060 & -062

CHILD PARCEL: 01-00-002-115-082

STARTING POINT: FRONT & DEPTH TO AC CORR PER SURV BY STAN R. LOCH

24-04867



SPLITS/DEEDS PROCESSED
 LORAIN COUNTY TAX MAP DEPARTMENT
 226 MIDDLE AVE. ELYRIA, OH

SURVEYED BY:	STAN R. LOCH	SURV # 51205
CLOSURE:	1: 68917	
MAP PAGE(S):	01-00-002	
APPROVED BY:	AC	DATE: June 12, 2024
SCALE:	1 in = 50 ft	PRIOR INSTRUMENT: 2004- 0007130