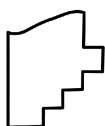
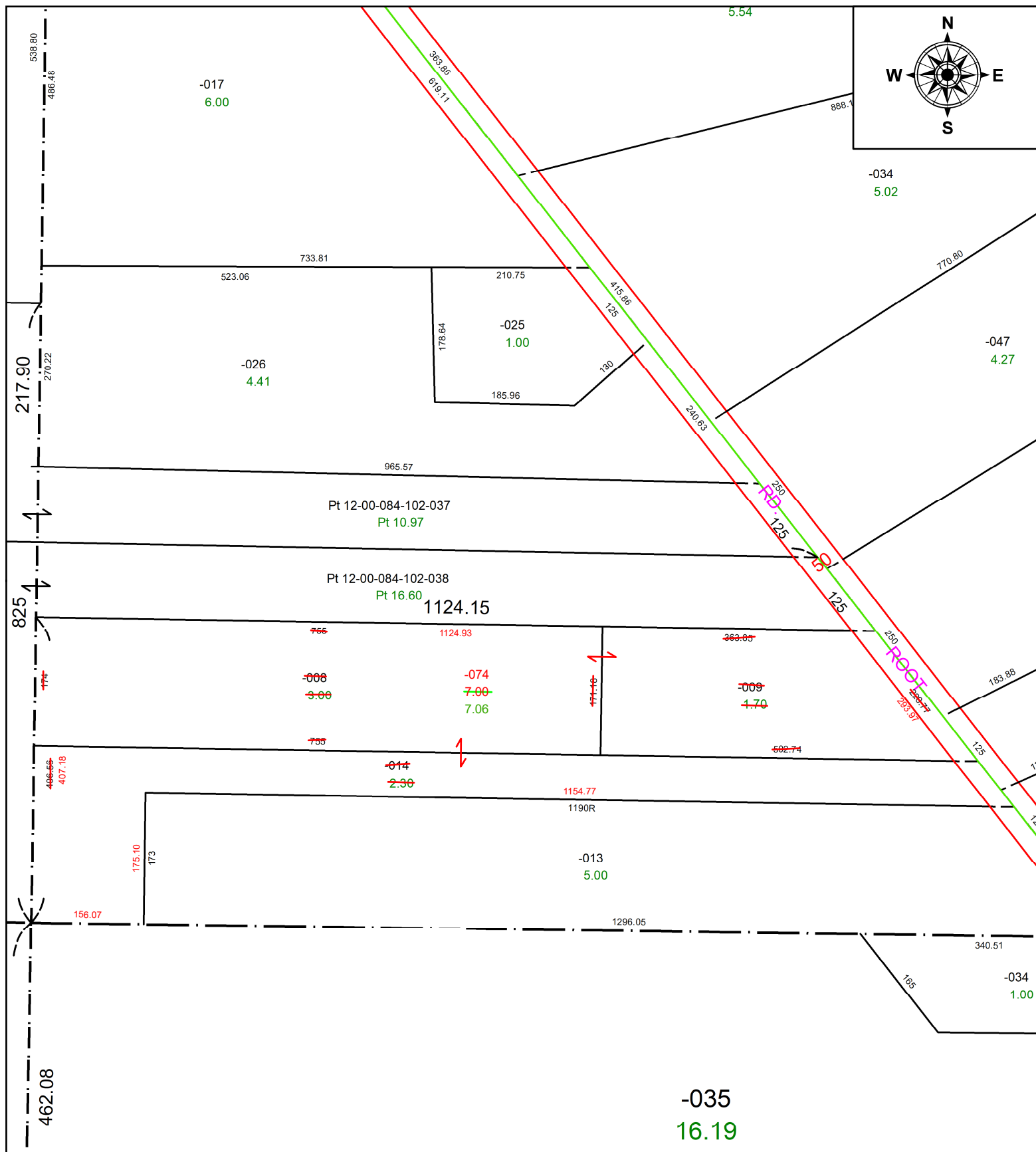


PARENT PARCEL: 12-00-077-000-008, -009, & -014

CHILD PARCEL: 12-00-077-000-074

STARTING POINT: **AC CORR PER SURV BY ROBERT M. RUFFING**

24-04865



SPLITS/DEEDS PROCESSED
 LORAIN COUNTY TAX MAP DEPARTMENT
 226 MIDDLE AVE. ELYRIA, OH

SURVEYED BY: ROBERT M. RUFFING **SURV # 51203**

CLOSURE: 1: 804196

MAP PAGE(S): 12-00-077

APPROVED BY: AC **DATE:** June 12, 2024

SCALE: 1 in = 170 ft **PRIOR INSTRUMENT:** 2024- 0006713