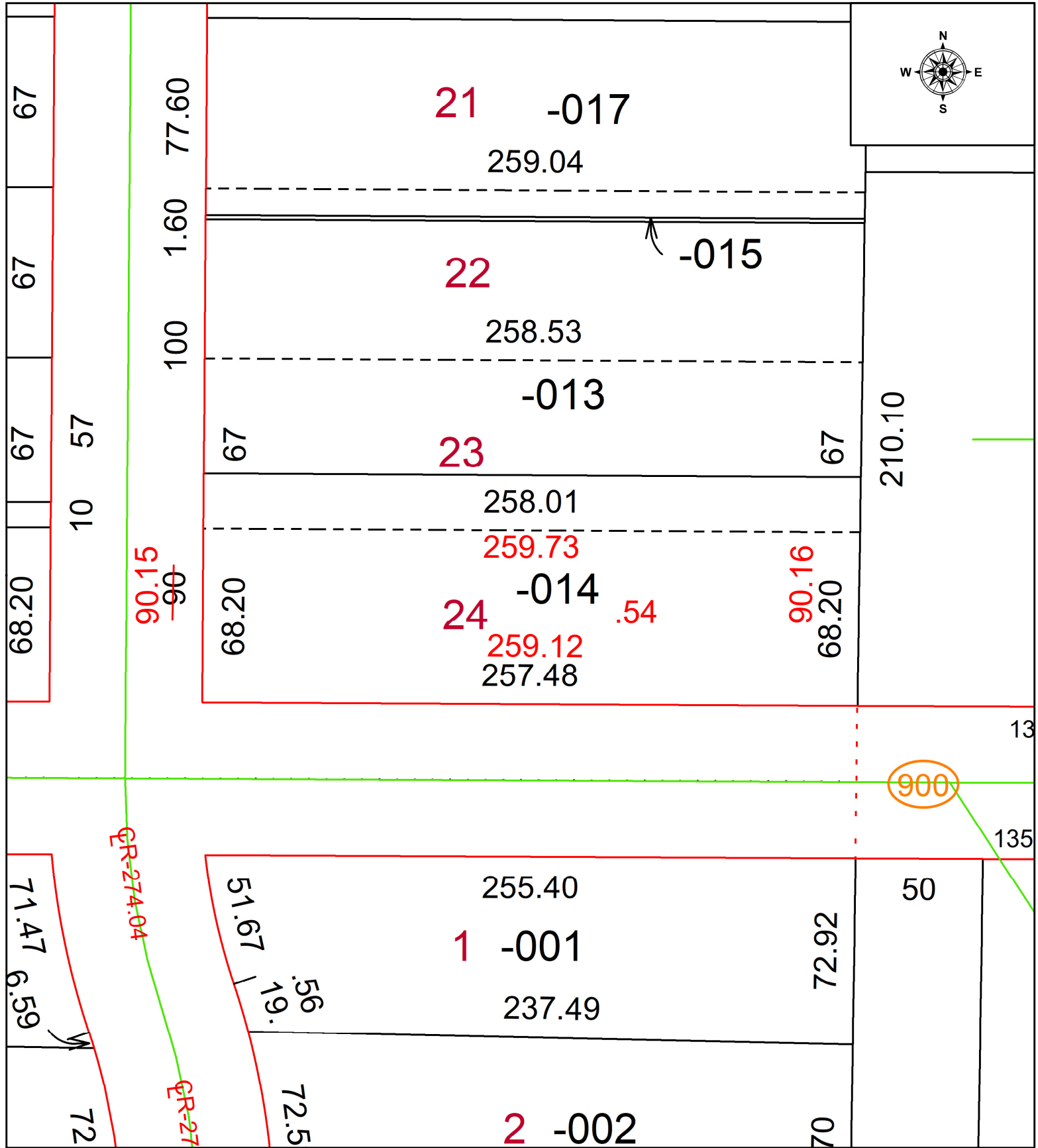


PARENT PARCEL: 18-00-022-105-014

CHILD PARCEL: N/A FRONTAGE & DEPTH TO ACREAGE

STARTING POINT: INTERSECTION OF C/L S OF MCKINLEY AVE & DICKSON ST

22-04865-D



SPLITS/DEEDS PROCESSED
 LORAIN COUNTY TAX MAP DEPARTMENT
 226 MIDDLE AVE. ELYRIA, OH

SURVEYED BY: SCOTT CASEY
 CLOSURE: 1: 78266
 MAP PAGE(S): 18-00-022
 APPROVED BY: WRZ DATE: 5/20/2022
 SCALE: 1" = 75 PRIOR INSTRUMENT: 2018-0678953