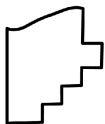
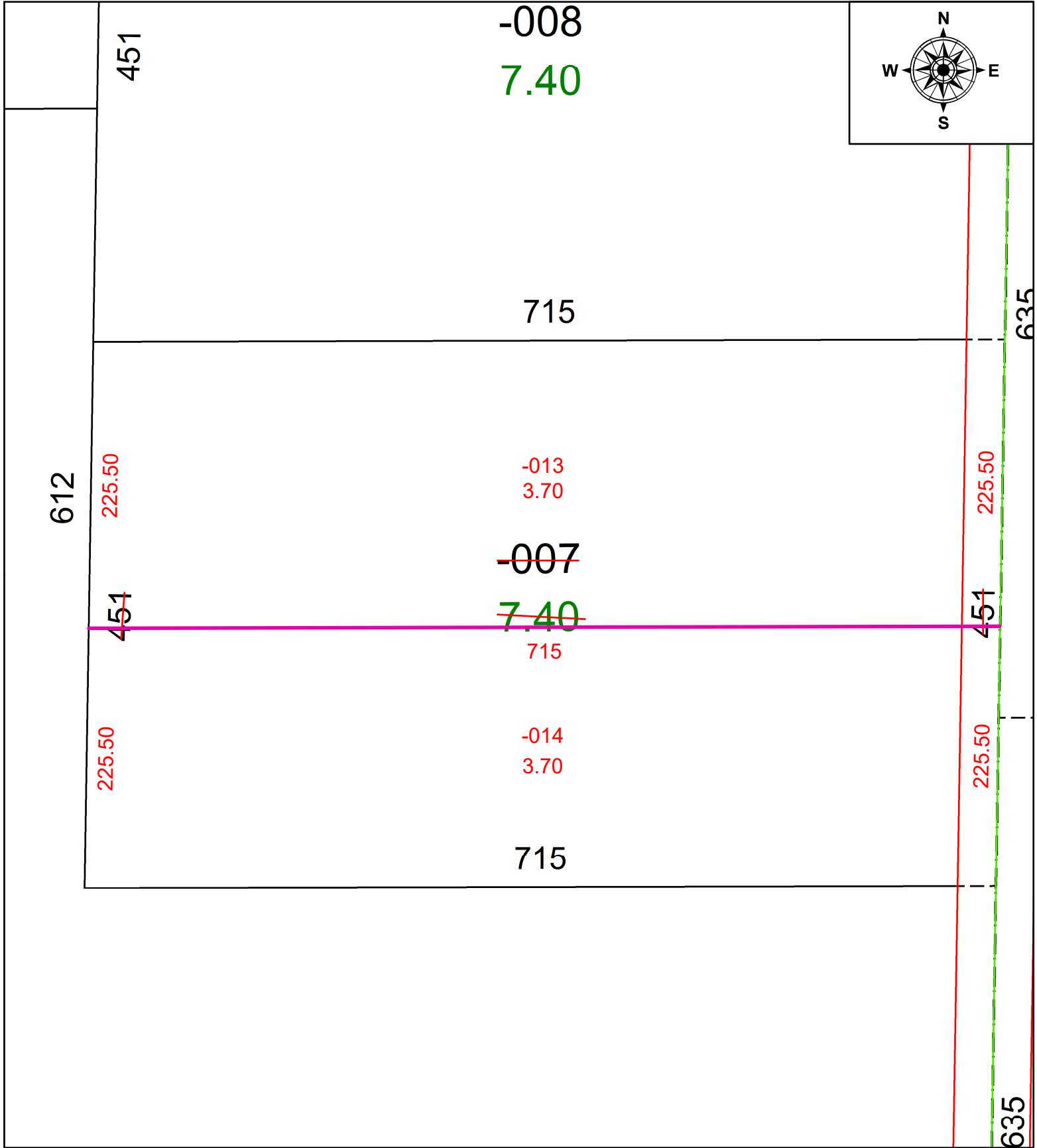


PARENT PARCEL: 16-00-083-000-007
CHILD PARCEL: 16-00-083-000-013 & -014
STARTING POINT: C/L OF MENNELL RD AND NE CORNER OF O/L 83

24-04852



SPLITS/DEEDS PROCESSED
LORAIN COUNTY TAX MAP DEPARTMENT
226 MIDDLE AVE. ELYRIA, OH

SURVEYED BY: AMY M. KELLY SURV # 51174
CLOSURE: 1: INF
MAP PAGE(S): 16-00-083
APPROVED BY: AC DATE: May 02, 2024
SCALE: 1 in = 100 ft PRIOR INSTRUMENT: 2024- 0004903