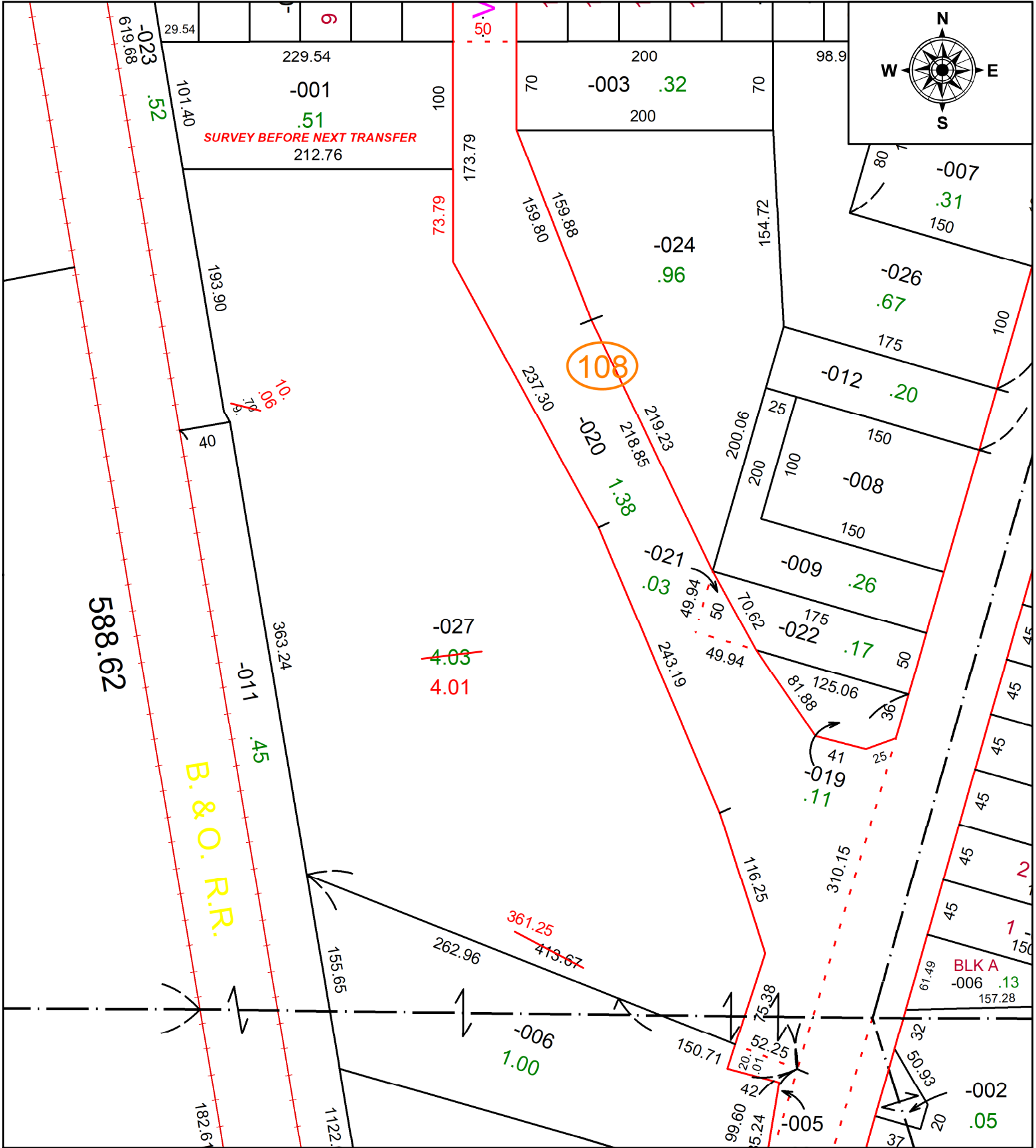


PARENT PARCEL: 06-24-009-108-027

CHILD PARCEL: **AC. CORR. PER SURVEY LOUIS GIFFELS**

22-04852-C

STARTING POINT: S.E. CORNER OF LOT 7 GUILFORD ALLOTMENT SUB. P.V. 13 PG. 44



**SPLITS/DEEDS PROCESSED**  
 LORAIN COUNTY TAX MAP DEPARTMENT  
 226 MIDDLE AVE. ELYRIA, OH

SURVEYED BY: LOUIS GIFFELS  
 CLOSURE: 1: 352002  
 MAP PAGE(S): 06-24-009  
 APPROVED BY: DMA DATE: 5/2/2022  
 SCALE: 1" = 100' PRIOR INSTRUMENT: 2019-0708871