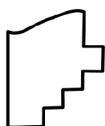
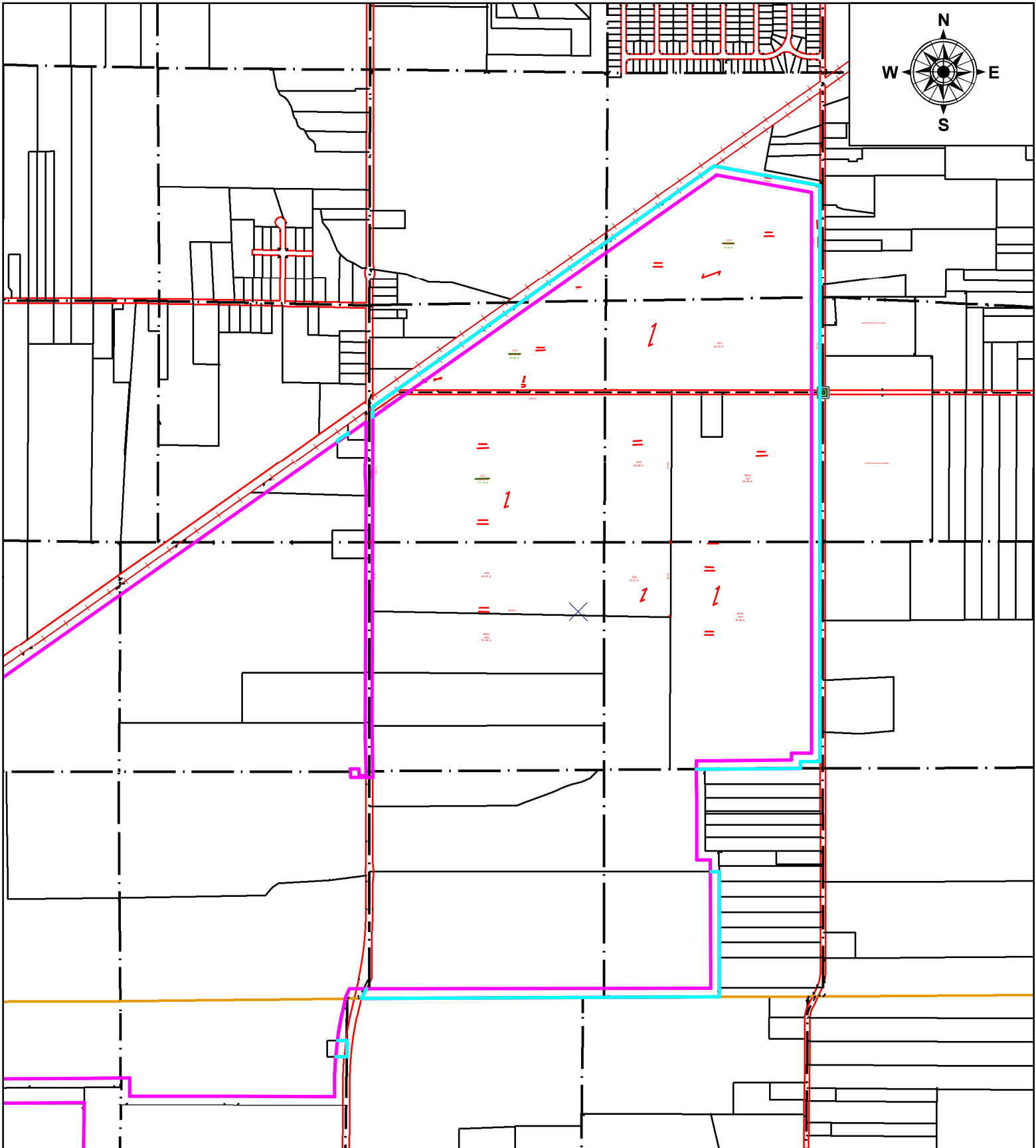


PARENT PARCEL: VILLAGE OF GRAFTON CONFORMING BOUNDARY PETITION

CHILD PARCEL: PER ORD. # 22-003

STARTING POINT: 100' ANNEXATION

22-04851-X



**SPLITS/DEEDS PROCESSED**  
 LORAIN COUNTY TAX MAP DEPARTMENT  
 226 MIDDLE AVE. ELYRIA, OH

SURVEYED BY: KEVIN CANAVAN  
 CLOSURE: NA  
 MAP PAGE(S): MANY  
 APPROVED BY: TJS DATE: 5/2/2022  
 SCALE: 1" = 1500' PRIOR INSTRUMENT: DV XXXX/XXXX