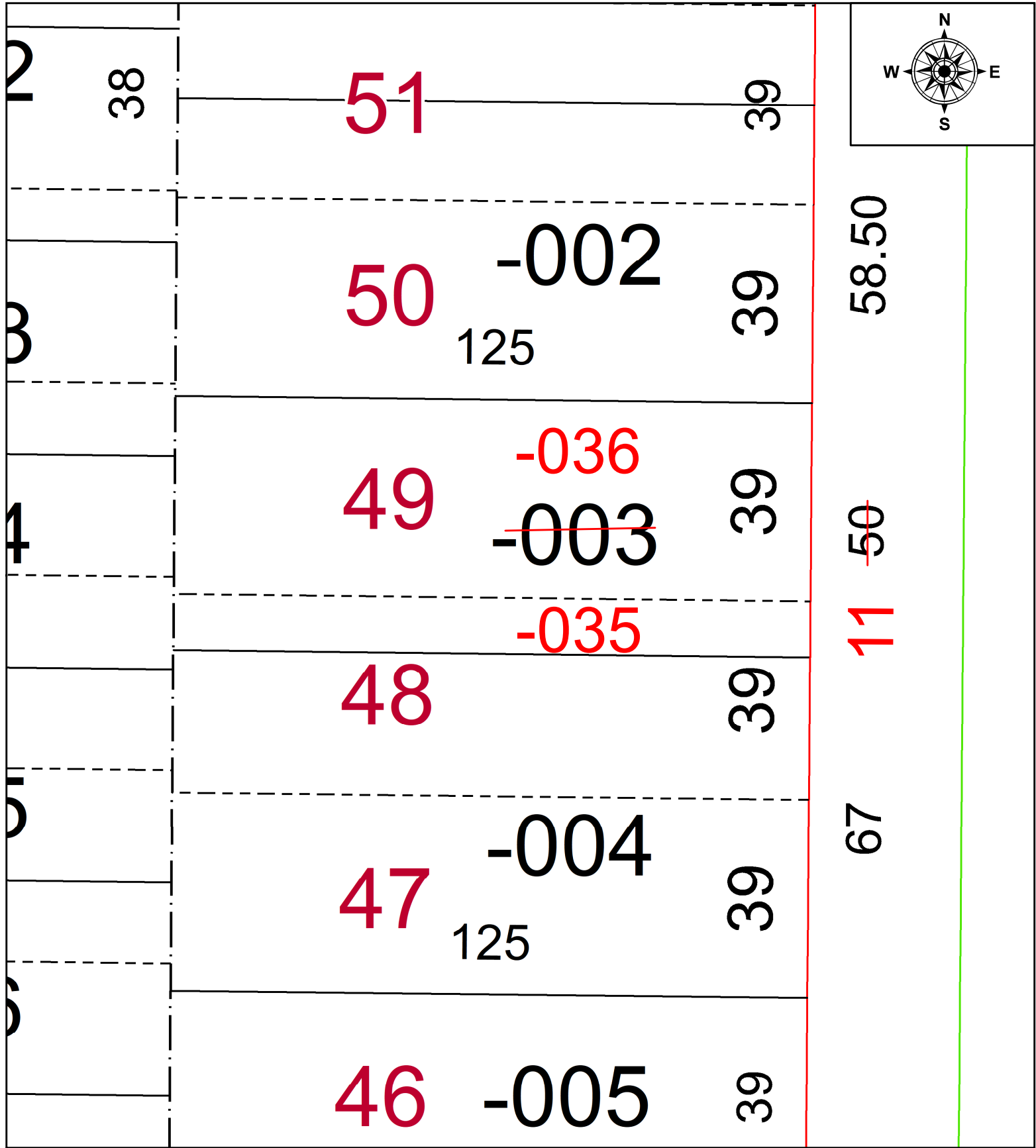


PARENT PARCEL: 06-25-019-107-003

CHILD PARCEL: 06-25-019-107-035, -036

STARTING POINT: **UNCOMBINATION PER PRIOR DEED**

22-04847-U



**SPLITS/DEEDS PROCESSED**  
 LORAIN COUNTY TAX MAP DEPARTMENT  
 226 MIDDLE AVE. ELYRIA, OH

SURVEYED BY: \_\_\_\_\_ N/A  
 CLOSURE: \_\_\_\_\_ N/A  
 MAP PAGE(S): \_\_\_\_\_ 06-87  
 APPROVED BY: \_\_\_\_\_ AC DATE: \_\_\_\_\_ 4/25/2022  
 SCALE: \_\_\_\_\_ 1" = 25' PRIOR INSTRUMENT: \_\_\_\_\_ 2022- 0871323