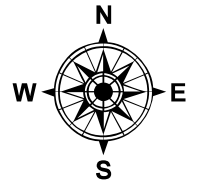
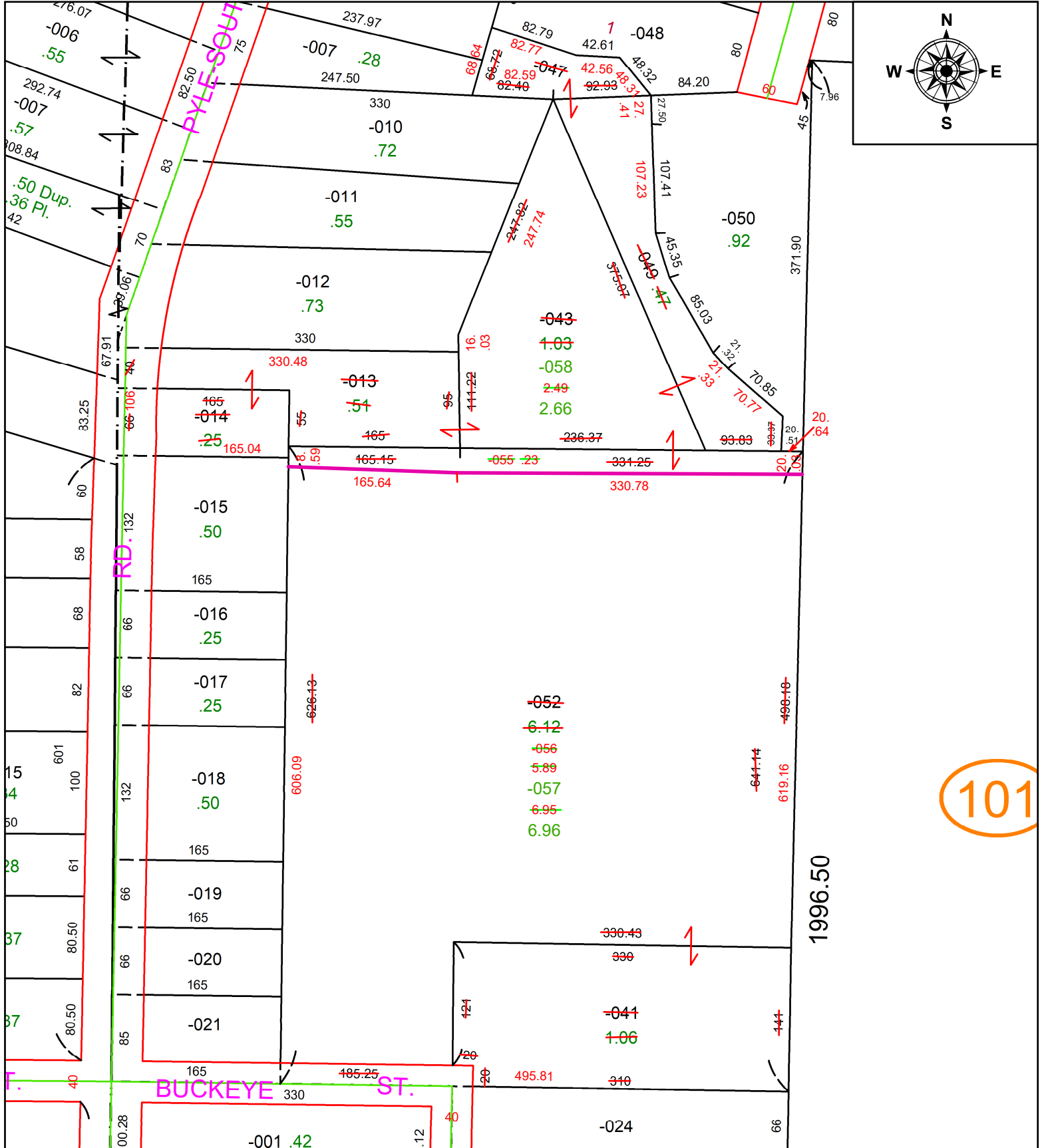


PARENT PARCEL: 05-00-012-101-013, -014, -041, -043, -047, -049, & -052

CHILD PARCEL: 05-00-012-101-055, -056, -057 & -058

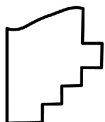
STARTING POINT: **AC CORR PER SURV BY SCOTT J. CASEY**

24-04843



101

1996.50



**SPLITS/DEEDS PROCESSED**  
 LORAIN COUNTY TAX MAP DEPARTMENT  
 226 MIDDLE AVE. ELYRIA, OH

SURVEYED BY: SCOTT J. CASEY SURV # 51157  
 CLOSURE: 1: 45027  
 MAP PAGE(S): 05-00-012  
 APPROVED BY: AC DATE: April 11, 2024  
 SCALE: 1 in = 125 ft PRIOR INSTRUMENT: 2024- 0003464